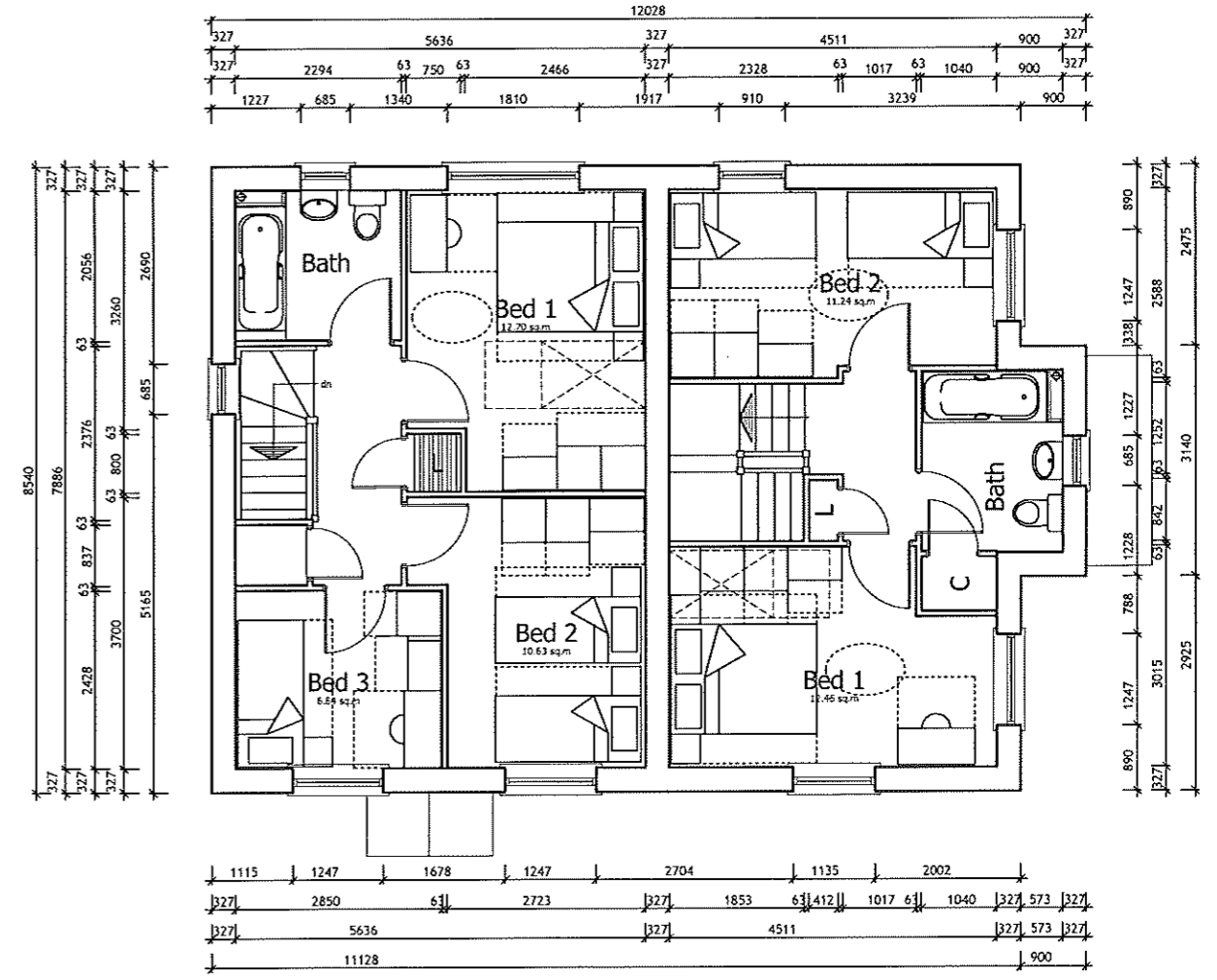


GROUND FLOOR PLAN

Hanbury 88.89 sq.m 957 sq.ft Thatcham 75.62 sq.m 814 sq.ft



FIRST FLOOR PLAN

REV	NOTES	DATE	BY/CHK

DO NOT SCALE

HANBURY/THATCHAM FLOOR PLANS

RUSSELL GROVE WERRINGTON

DRAWING NO. RG-HT-101-02
 SCALE 1:100 @ A3
 FLOOR AREA SEE PLANS
 DATE 23.07.14
 DRAWN RW
 CHECK -



UNIT E, PINWOOD, BELL HEATH WAY
 WOODGATE BUSINESS PARK,
 WOODGATE VALLEY, BIRMINGHAM, B32 3BZ
 TEL (0121) 421 8300 FAX (0121) 421 8210
 ©LOVELL PARTNERSHIPS LIMITED 2013