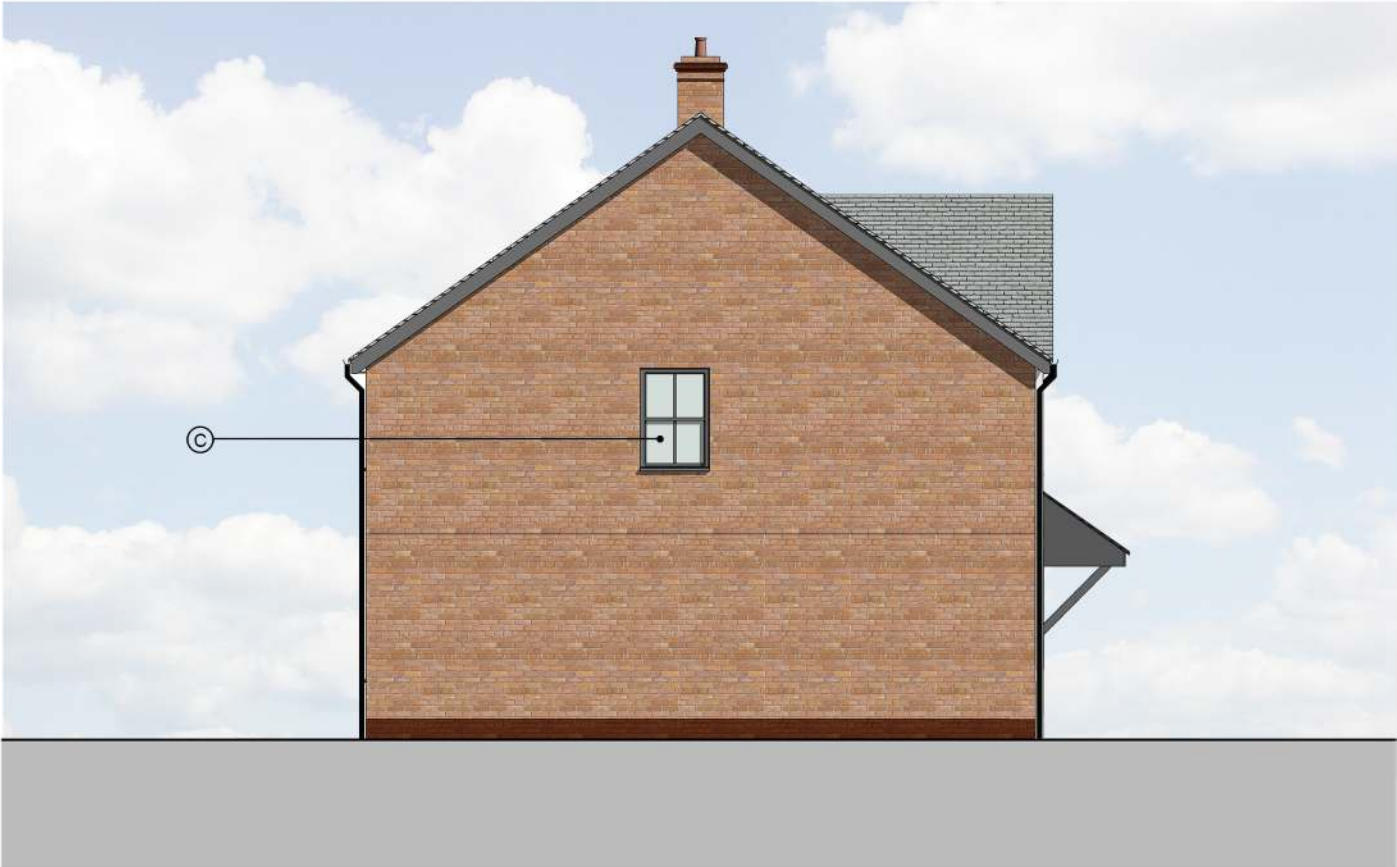




House Type B (Plot 39 and 38)  
Front Elevation



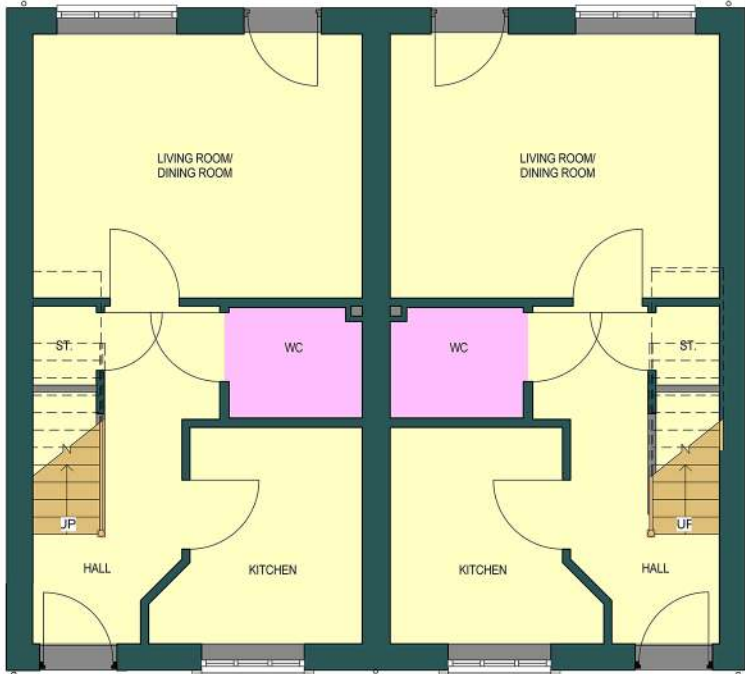
House Type B (Plot 39)  
Side Elevation



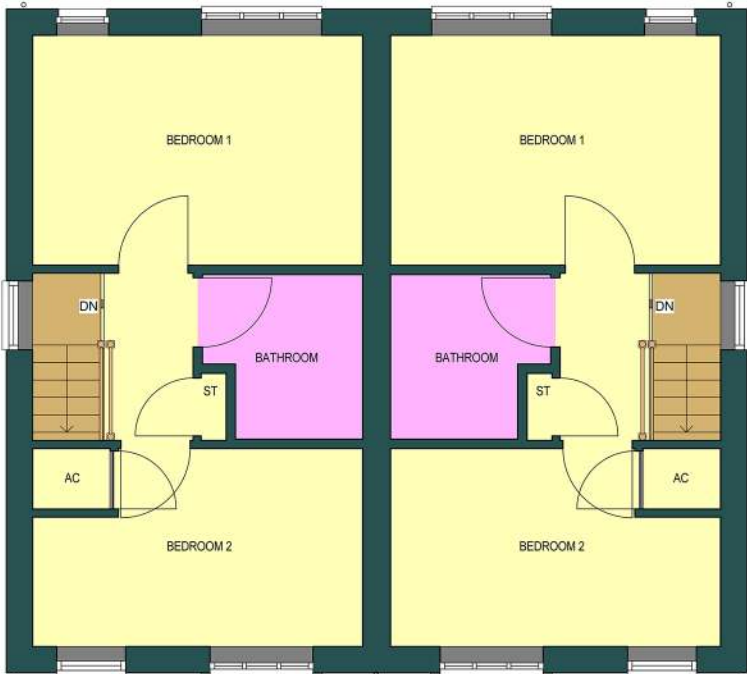
House Type B (Plot 38 and 39)  
Rear Elevation



House Type B (Plot 38)  
Side Elevation



House Type B (Plot 39 and 38)  
Ground Floor Plan



House Type B (Plot 39 and 38)  
First Floor Plan

## NOTES:

The copyright © of this drawing is vested in the Architect and must not be copied or reproduced without consent.

All Contractors must visit the site and be responsible for taking and checking dimensions relative to their work. Sutton and Wilkinson Chartered Architects to be advised of any variation between drawings and site conditions.

DO NOT SCALE OFF THIS DRAWING... IF IN DOUBT ASK

## Materials Legend

- (A) Dreadnought smooth faced 'Staffordshire Blue' roof tiles to L.A. approval.
- (B) Facing brickwork to L.A. approval.
- (C) Grey uPVC Double Glazed Windows.
- (D) Precast window surrounds.
- (E) Traditional style door canopy to L.A. approval.
- (F) Coloured GRP doorsets.
- (G) Darker brickwork basecourse to L.A. approval.
- (H) Lightweight GRP solution chimney to match L.A. approved facing brickwork.
- (I) PVCu bargeboards, fascia, soffits in grey.
- (J) PVCu bargeboards, fascia, soffits in grey.

## House Types

Plot 38 - House Type B - 71.0m<sup>2</sup> - 2B4P  
Plot 39 - House Type B - 71.0m<sup>2</sup> - 2B4P

REVISION:	AMENDMENT:	DATE:
A	STAFFORDSHIRE BLUE TILE NOTED, CHIMNEYS, CANOPIES ALTERED AS PER CONSERVATION OFFICER COMMENTS	30.09.14

## PLANNING ISSUE

# The Wrekin Housing Trust

PROJECT:
Proposed Residential Development at Land Off Bank Street, Cheadle

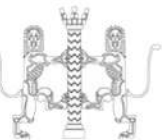
CLIENT:
The Wrekin Housing Trust

TITLE:
Plots 38-39 (House Type B) Proposed Plans and Elevations

## SUTTON AND WILKINSON CHARTERED ARCHITECTS

Victoria House, 13 New Penkridge Road,  
Cannock, Staffs, WS11 1HW

Telephone: 01543 466441  
Facsimile: 01543 462469  
e-mail: office@suttonwilkinson.co.uk



SCALE	DRAWN	DATE	SIZE
1: 100	RN	April 2014	A2
DRAWING NUMBER			REVISION
2263 - 110			A