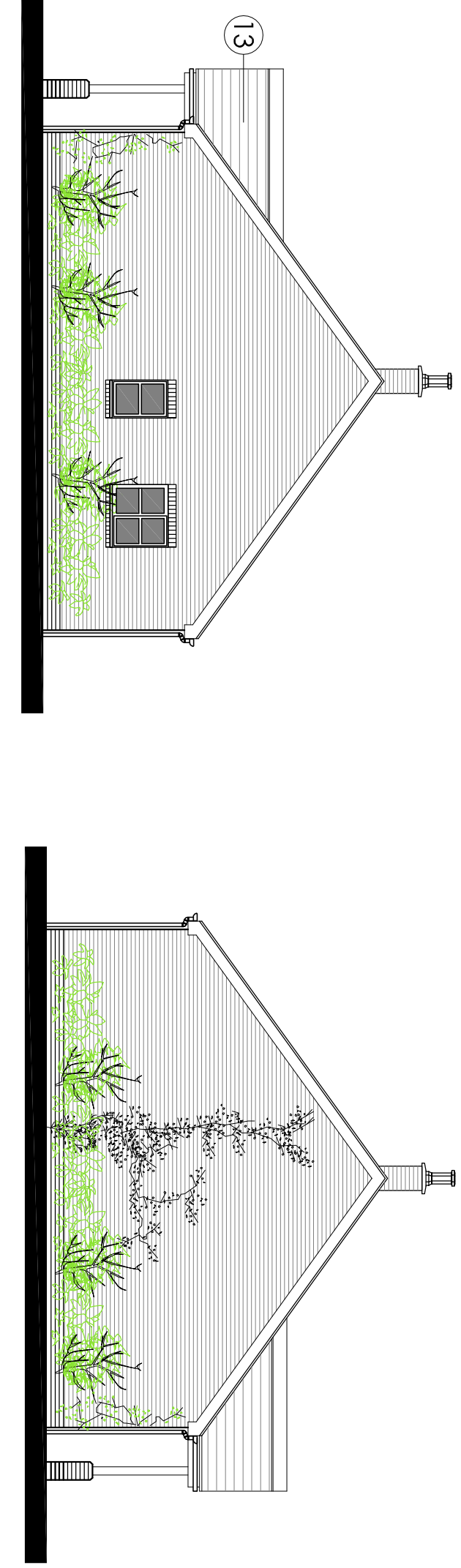


North point



Notes:

Material Schedule	
1	Facing brickwork, Staffordshire Red
2	Natural Penryn blue river stone roof tiles
3	Rain water goods, powder coated
4	Windows by JBC, UPVC colour coated
5	Windows by JBC, timber painted
6	Natural roofing stone walls with dressed stone quoins
7	Roofing stone walls with dressed stone quoins
8	Recessed timber roofline stone walls
9	Floors by JBC, timber painted doors
10	Doors by JBC, steel composite painted doors (secured by design)
11	Brick damp proof course
12	Porch oak framing
13	Porch timber painted framing
Landscaping Material Schedule	
14	Grass seed
15	Brick top footpath, fencing
16	Close boarded fencing
17	Staffordshire Red brickwork wall
18	Indigenous hedger



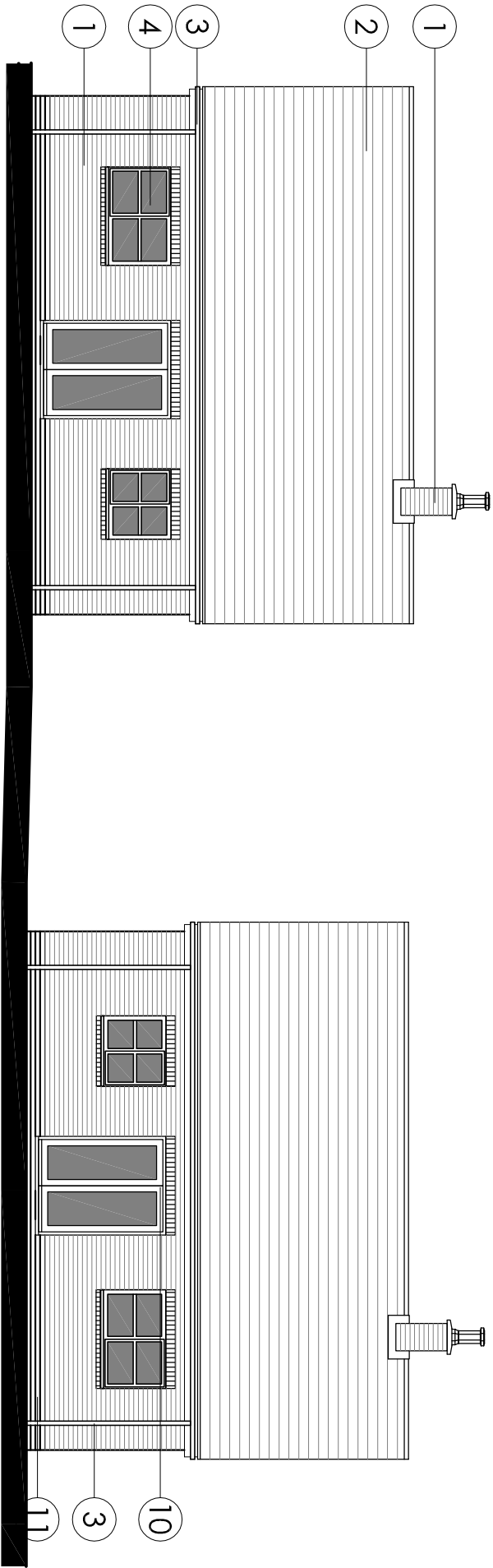
Typical Side Elevation

1:100



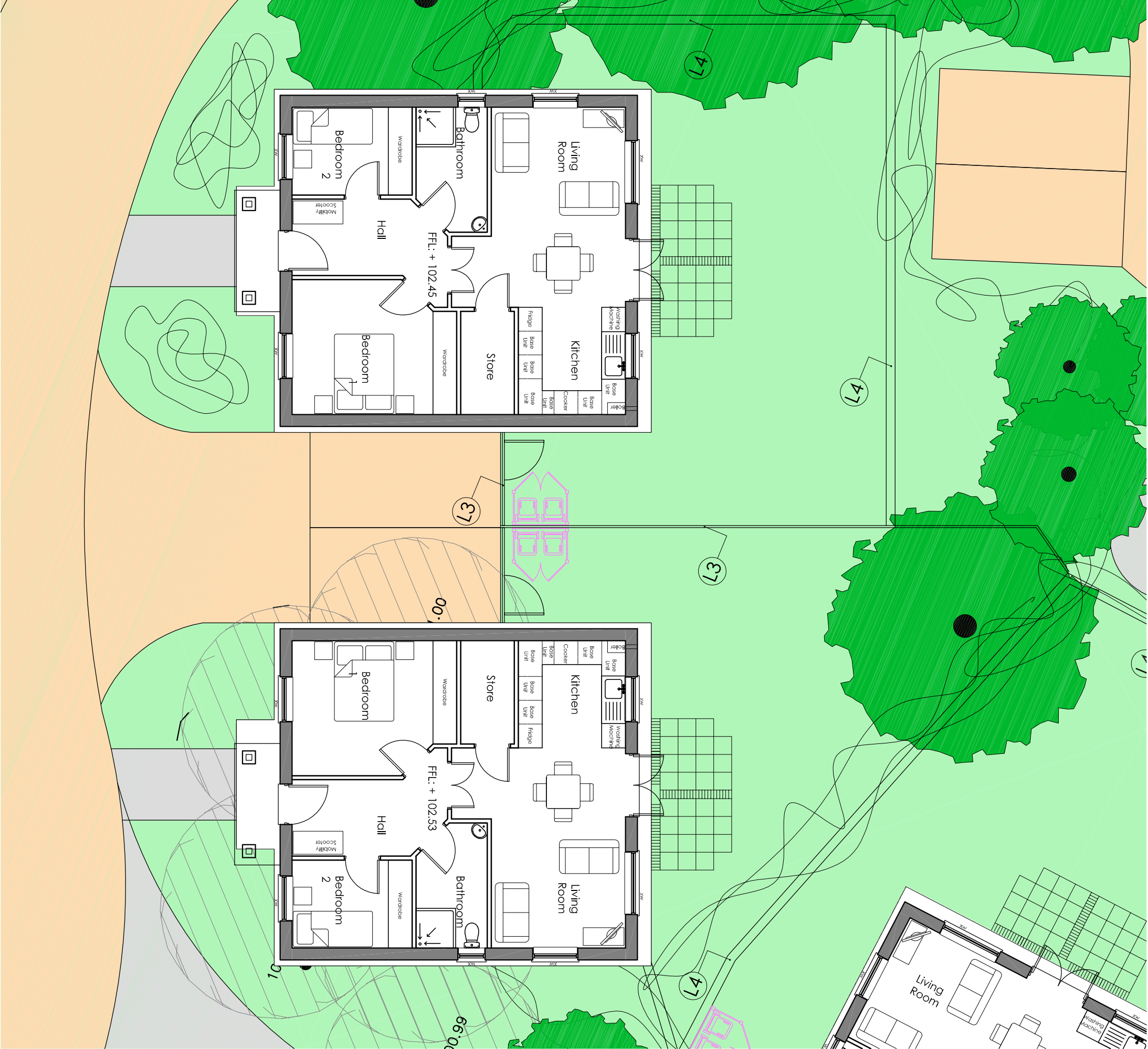
Street Scene Eastern Elevation

1:100



West Rear Elevation

1:100



Cottages D26 and D27

1:100

Revision Log:		Rev:	Description:	By:	Date:
1			Enhanced Developments		

Client:

Proposed Redevelopment  
'Arzo Camp'  
Nr Blackshaw Moor  
Leek  
Staffordshire

Scale:	1:1
--------	-----

Drawn by:	Checked:	Date:	Page size:
IJN	MFA	Oct 14	A1

Drawing Title: Cottages D26 and D27

Drawing Status:

PLANNING ISSUE	
Drawing Number:	Revision Number:
3262/SW/11/2011	PO



CORPORATE ARCHITECTURE LIMITED  
CHARTERED ARCHITECTS

HEAD OFFICE  
Vernon House, 1, Fincham Way,  
Leicester, LE1 7ZY  
Tel: 01838 462476  
RBA #

office@corporatearchitecture.co.uk  
www.corporatearchitecture.co.uk  
Chartered Practice