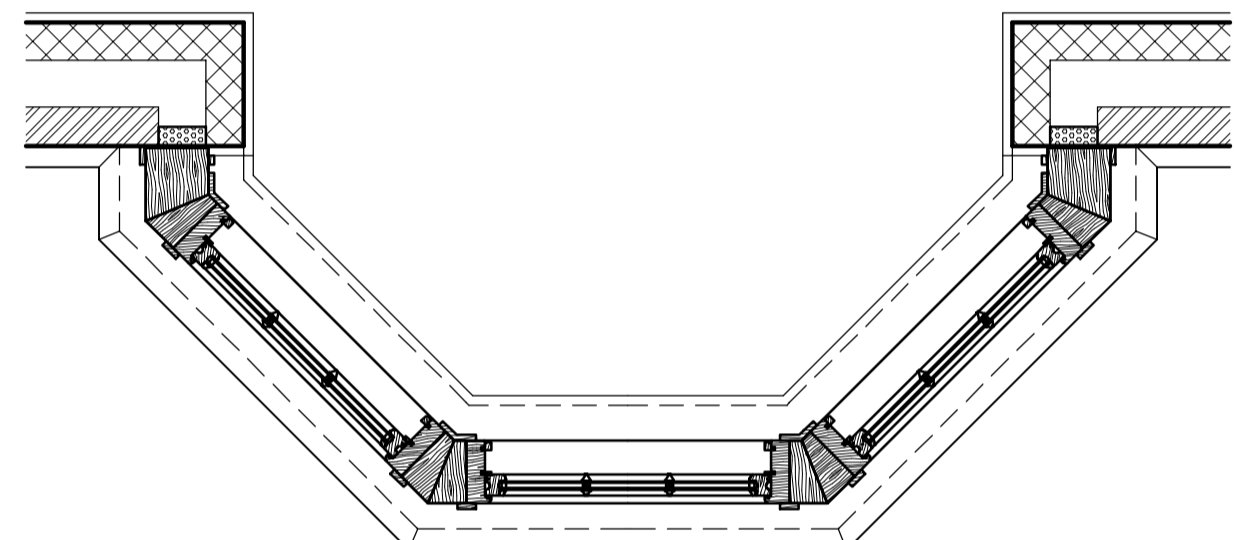
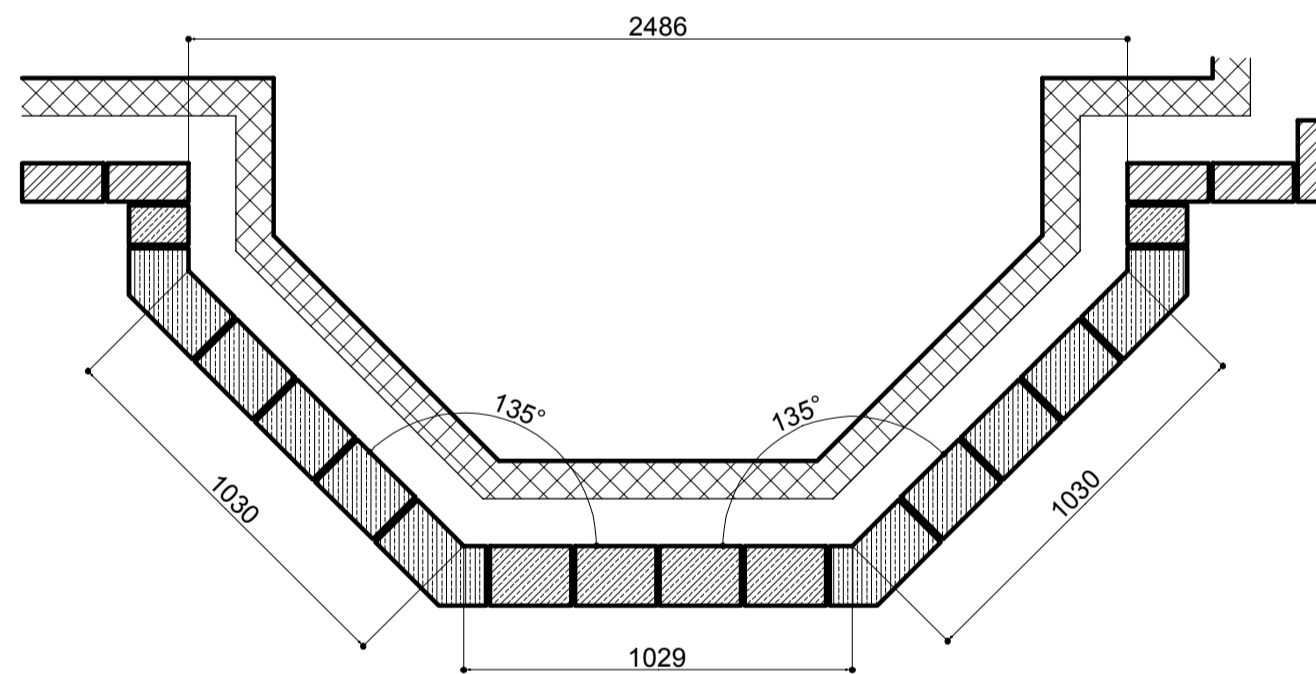


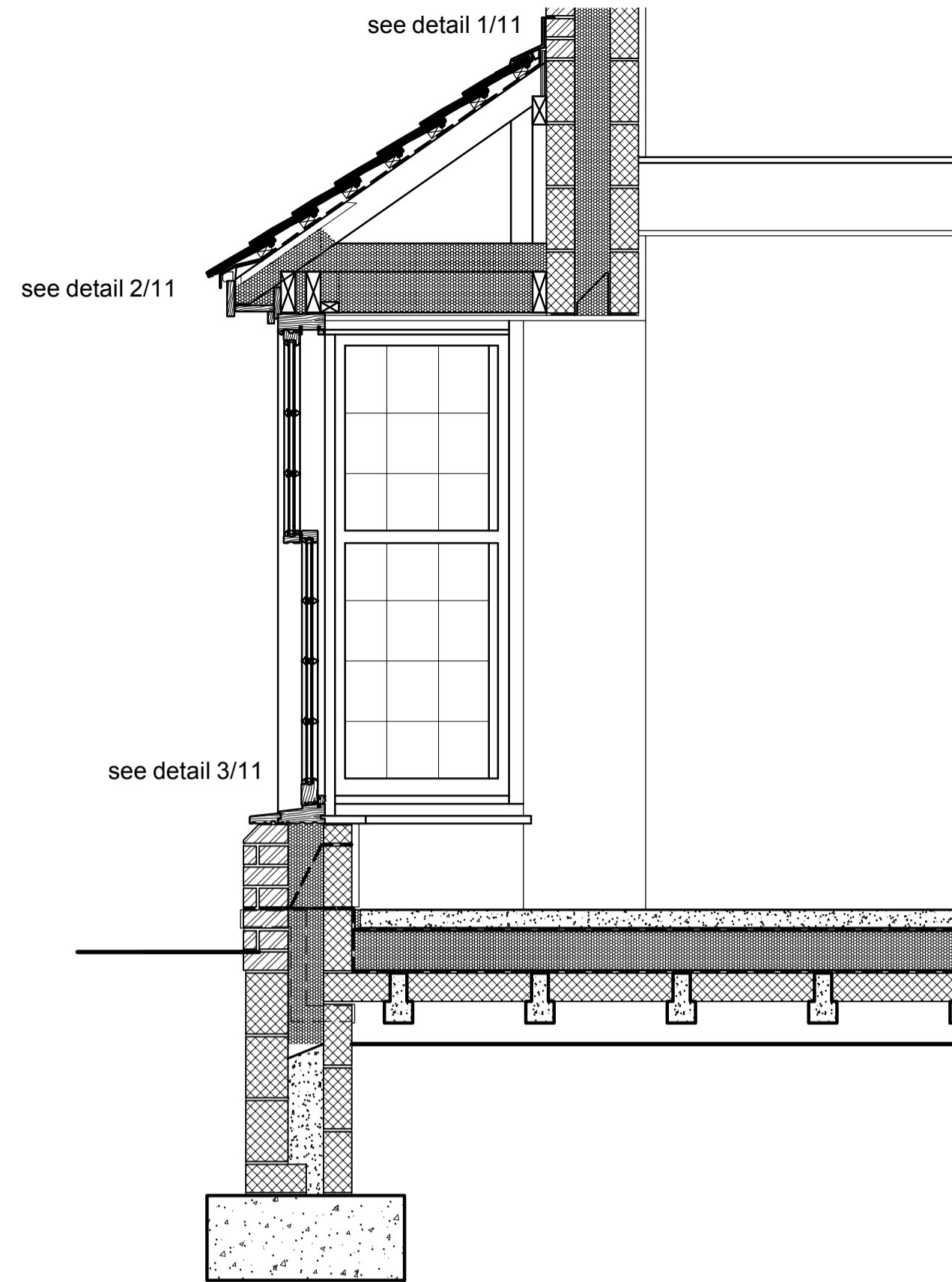
front elevation



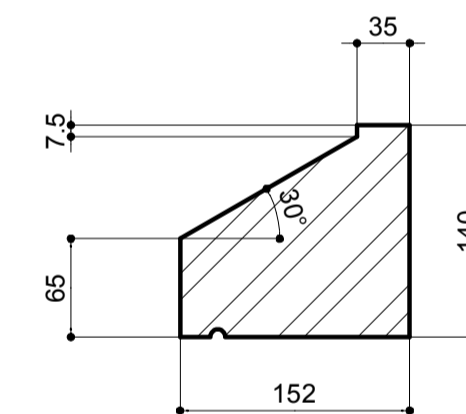
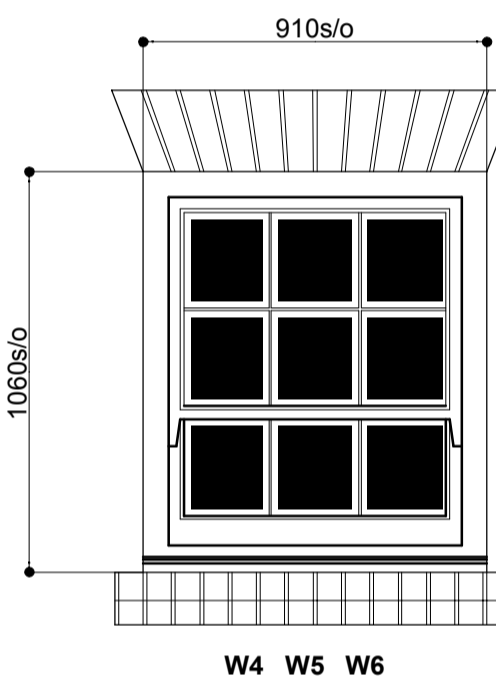
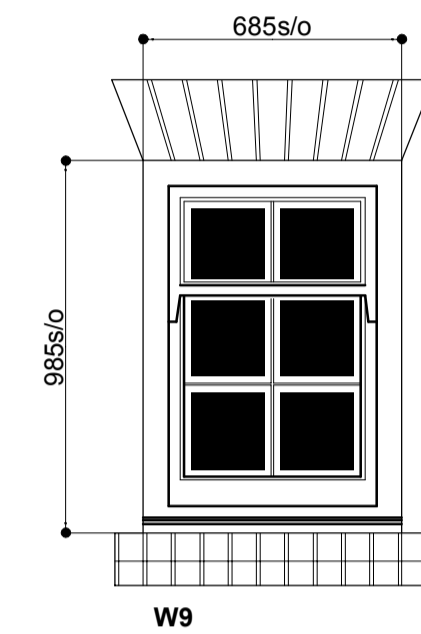
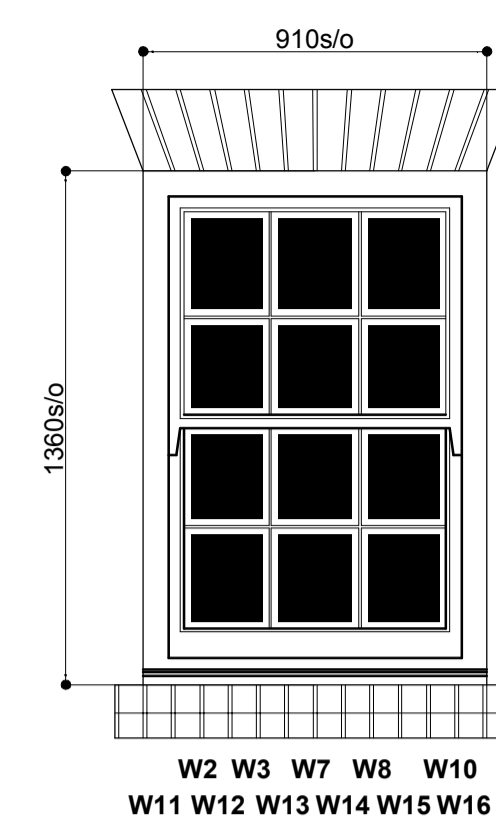
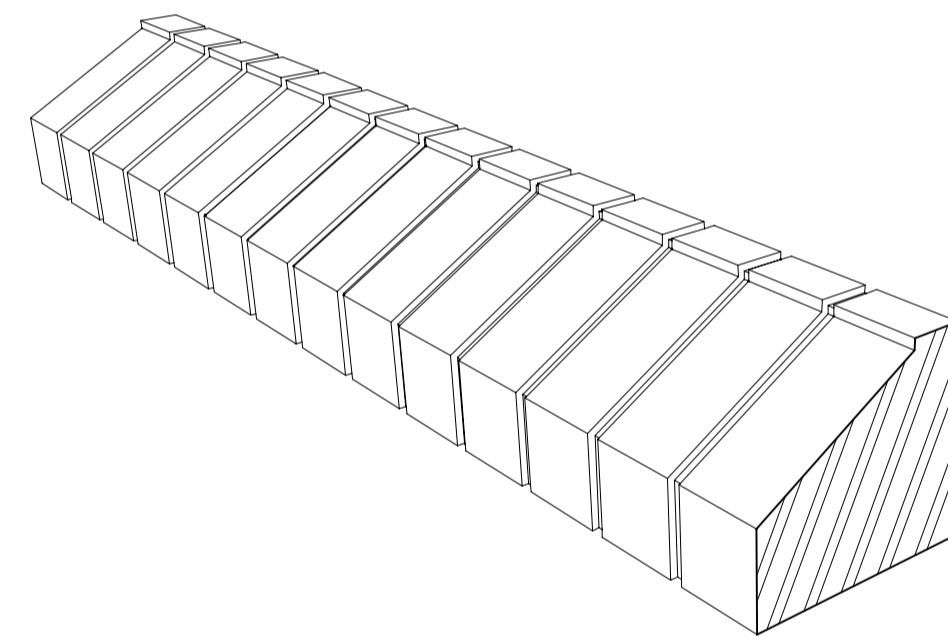
plan at window level



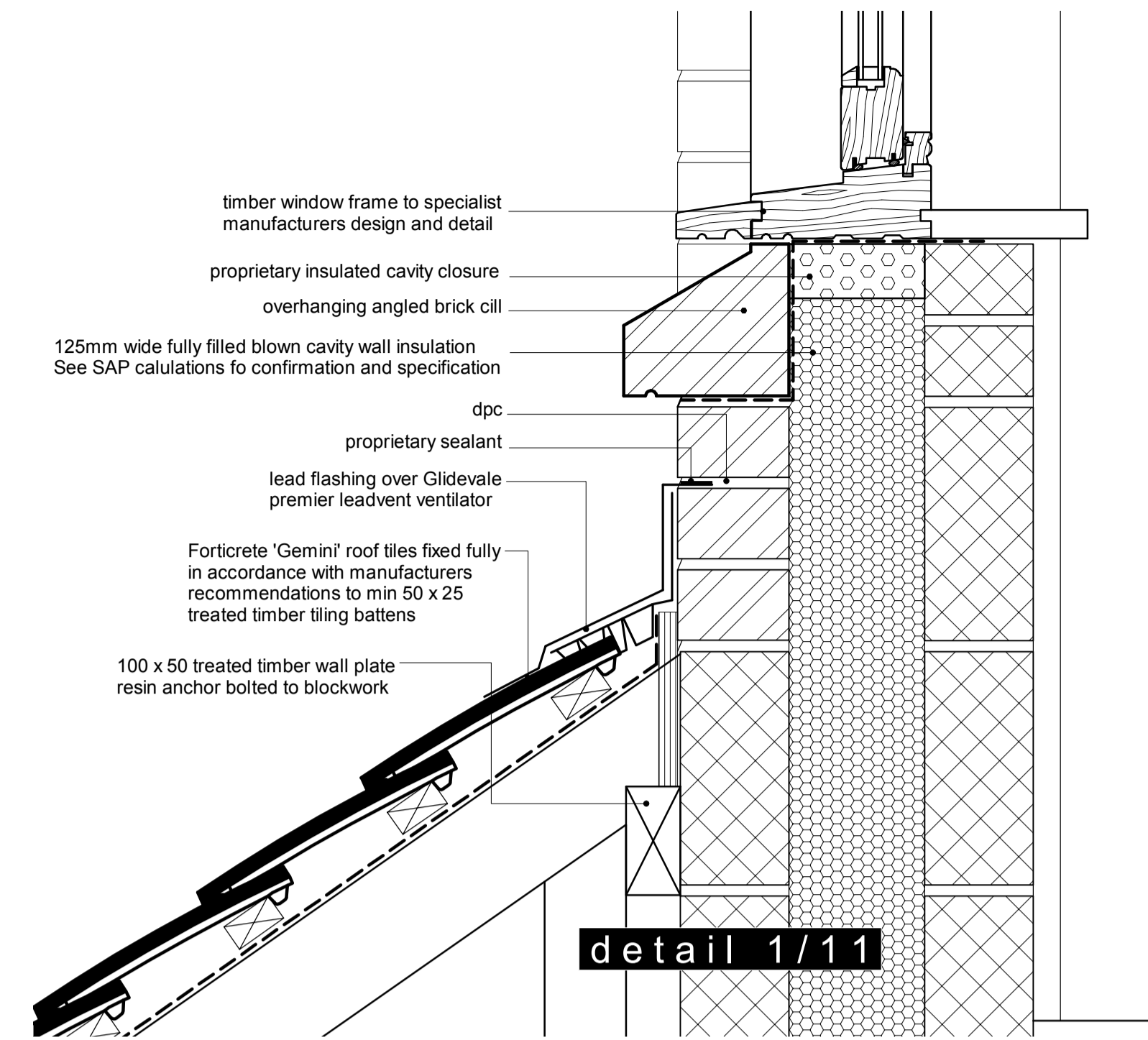
plan at masonry level



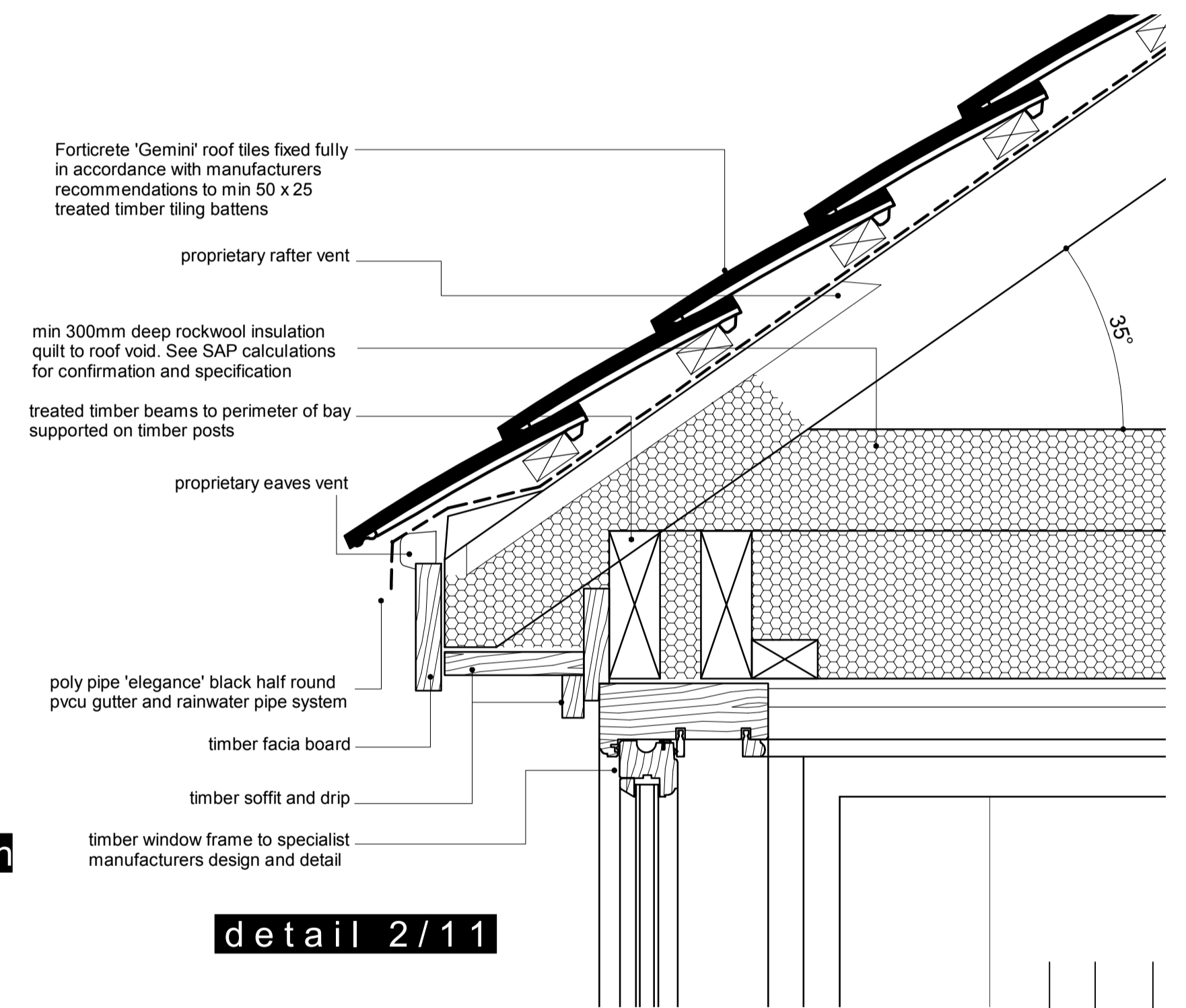
detail 8/11 perspective view of window cill (nts)



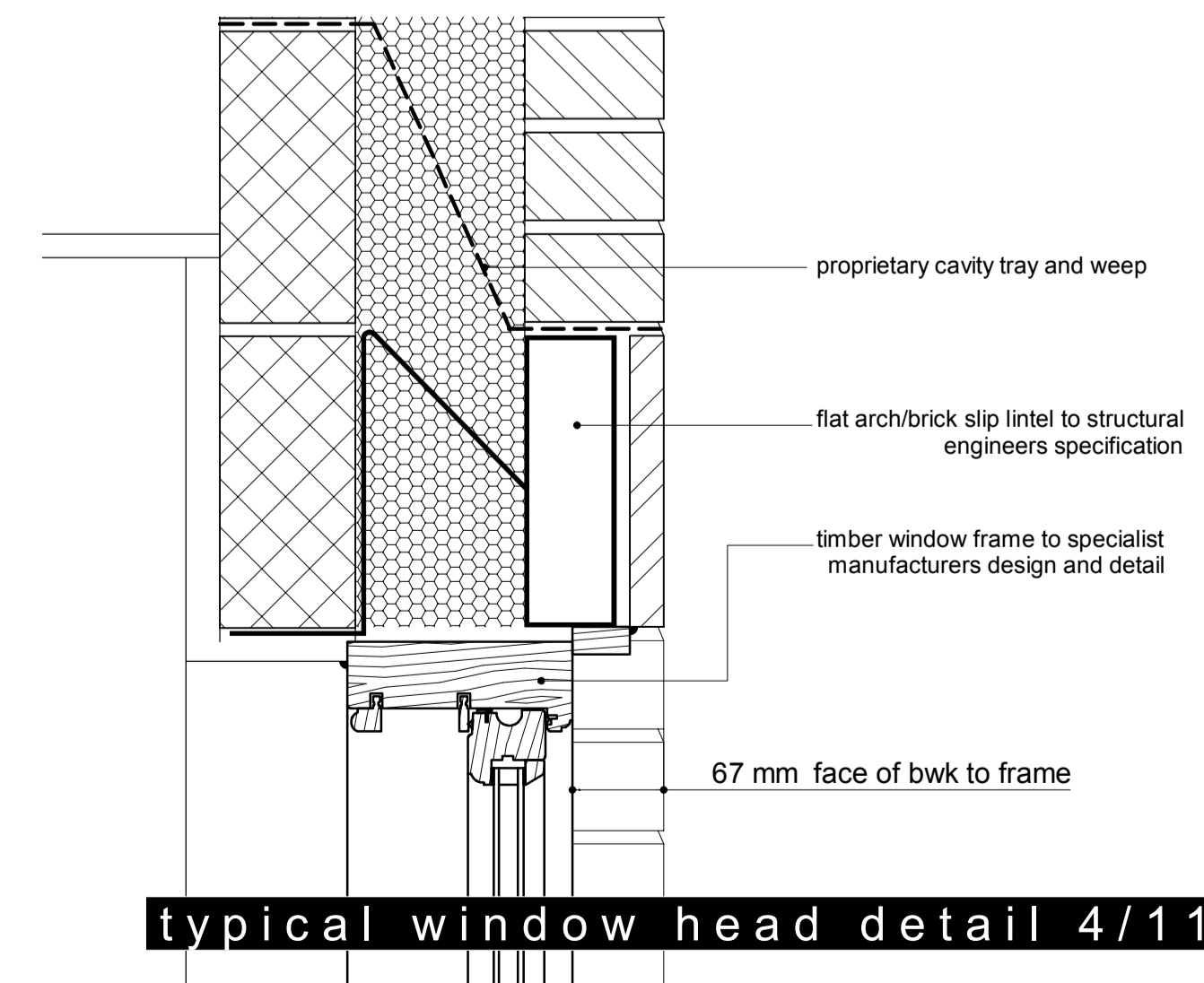
detail 7/11 window cill section



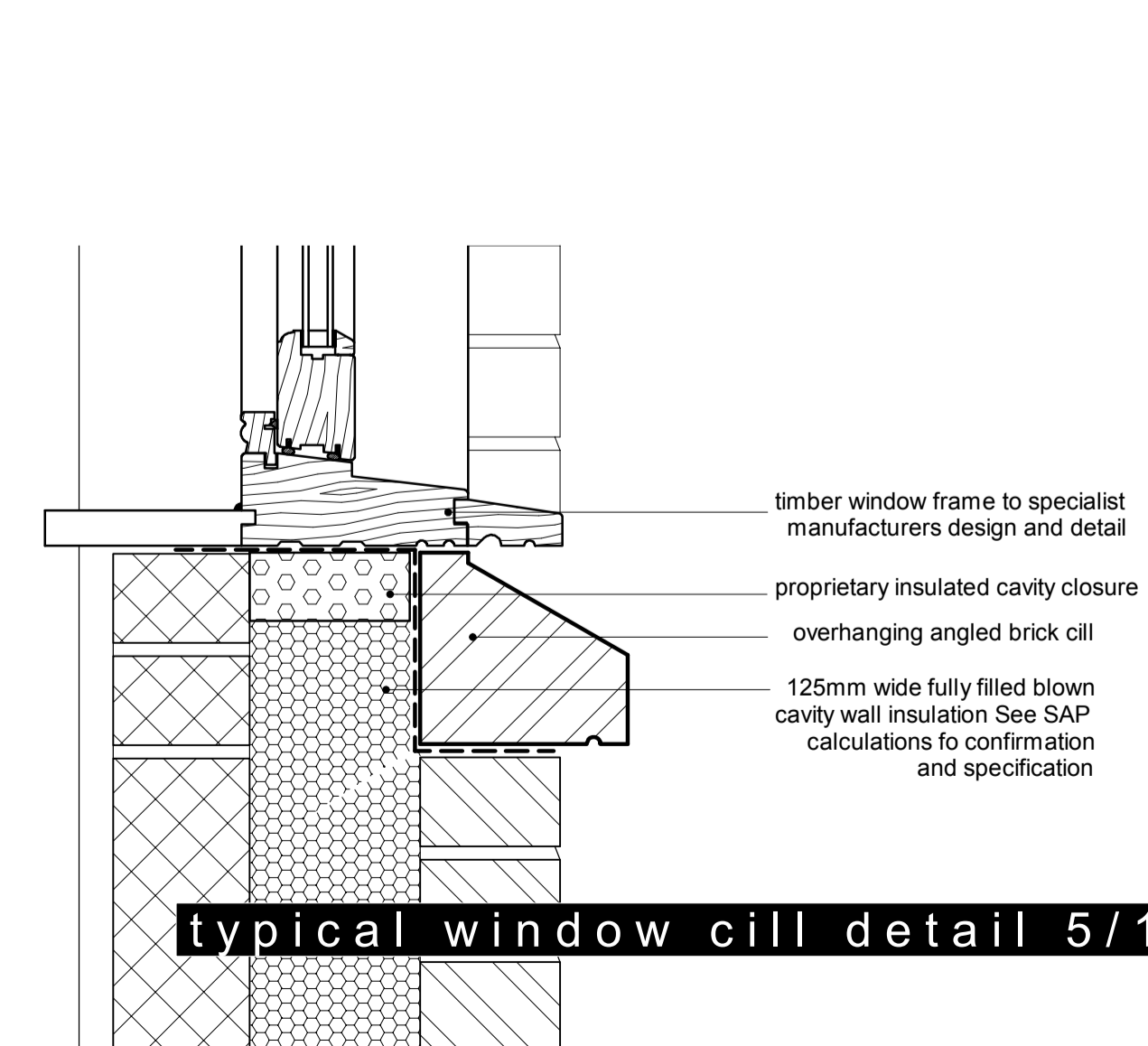
detail 1/11



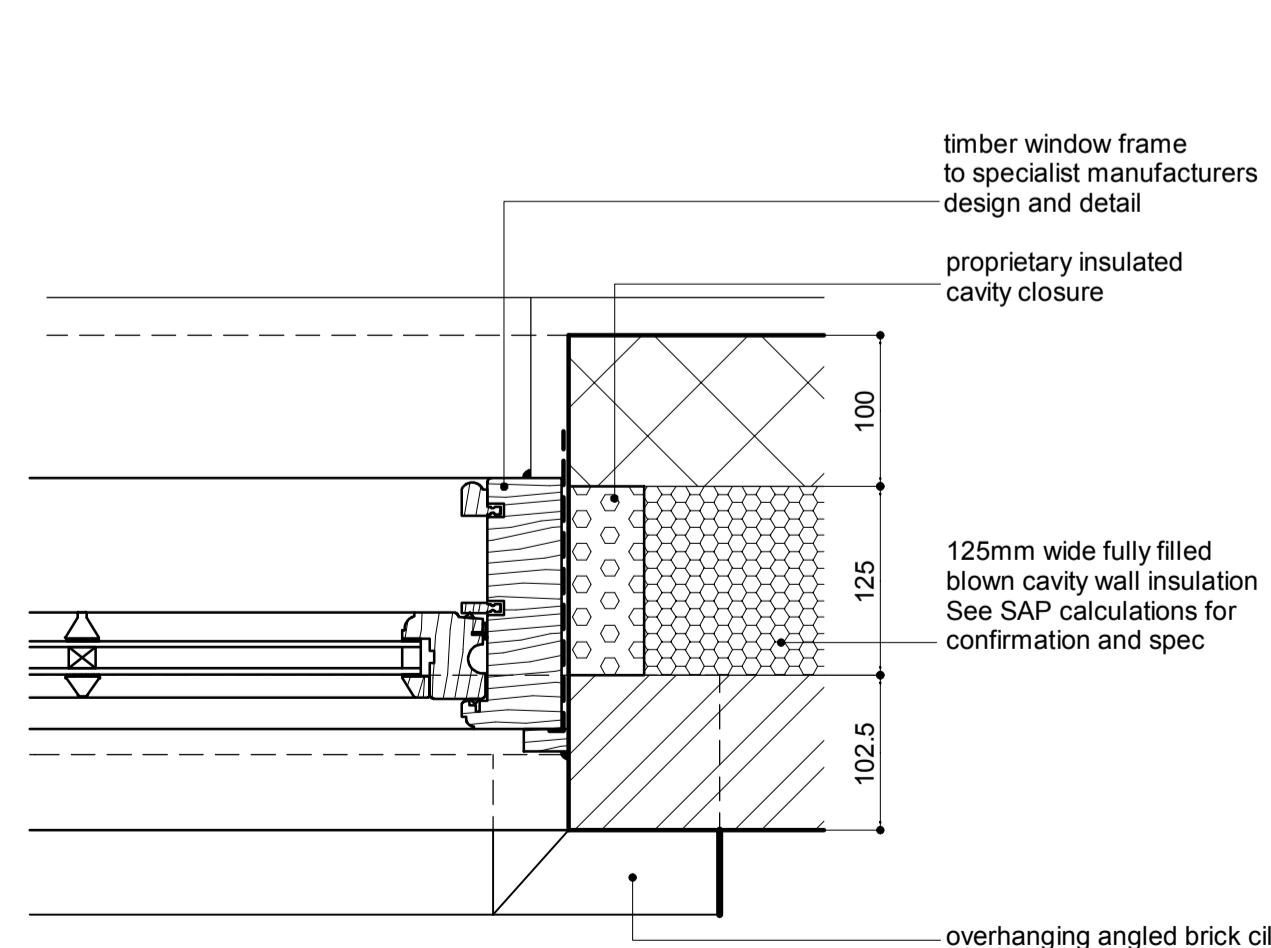
detail 2/11



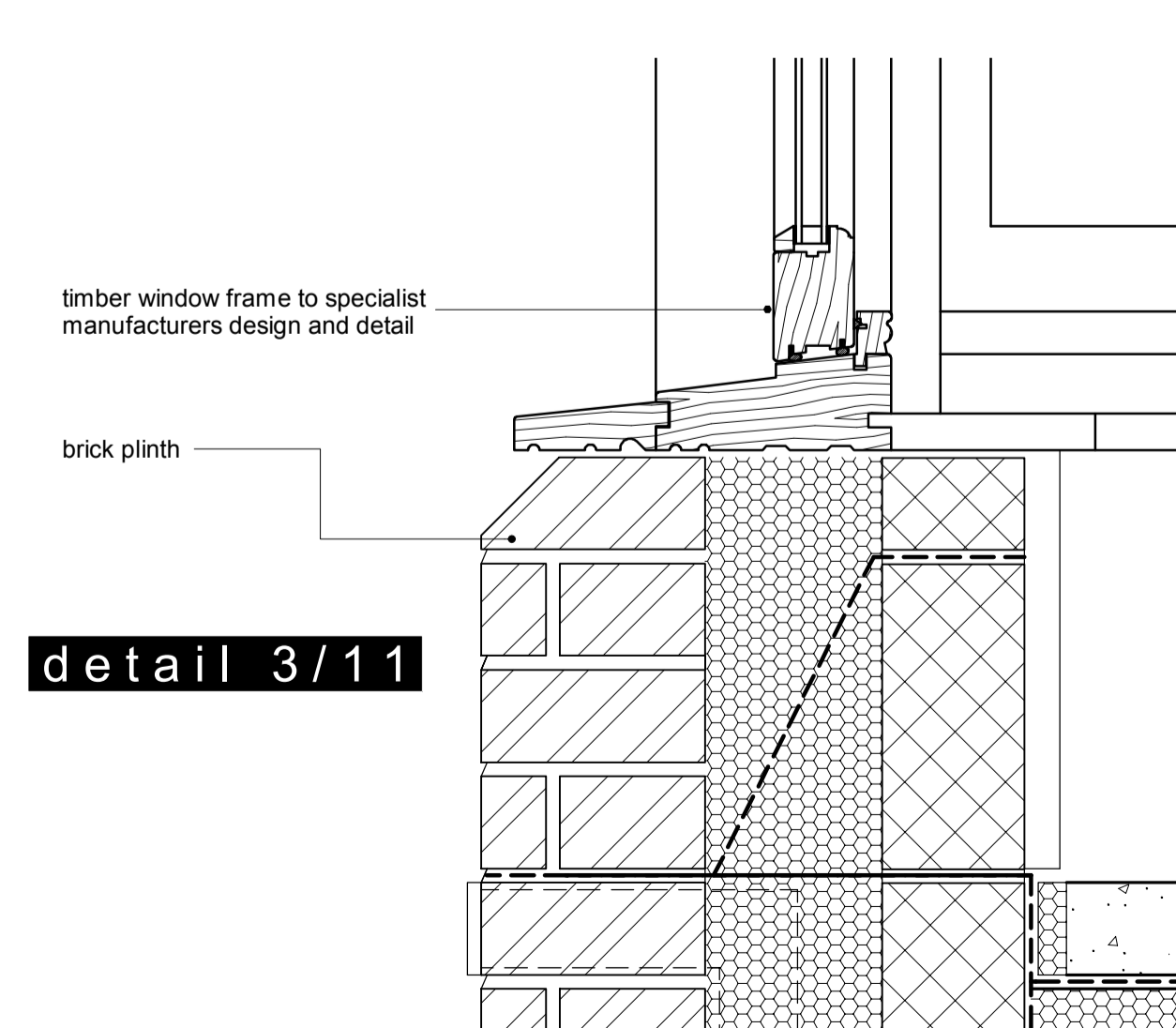
typical window head detail 4/11



typical window cill detail 5/11



detail 6/11 typical window jamb



detail 3/11

ctd architects © 2014

1. This drawing is copyright.
2. All dimensions to be checked on site before proceeding.
3. Contractor to check/adjust dimensions of new work to suit existing conditions. Do not assume existing structure or details are plumb, square or level.
4. Contractor must notify the architect of any discrepancies before proceeding.
5. All drawings to be read in conjunction with all other consultants drawings and specs.

Rev	Date	Description

ctd architects

Clerk Bank House
Clerk Bank
LEEK
Staffordshire
ST13 5HE

Tel: 01538 373477
Fax: 01538 386503
e: info@ctdarchitects.co.uk

architects | historic building
advisors | project managers
landscape & urban designers

Client: **WALTON HOMES**

Project: Residential development at:-
Church Croft,
Blythe Bridge Road,
Caverswall, Staffordshire

Title: plot 9:
window details

Status: **planning**

Scale: 1:50 A1 Size Job No: 1419
Drawn: SAT Chk'd Date: May 2014
File path: \drawings\2014\1419\Caverswall\plots 9 10\11
Drawing Number: **PT9 - 11**