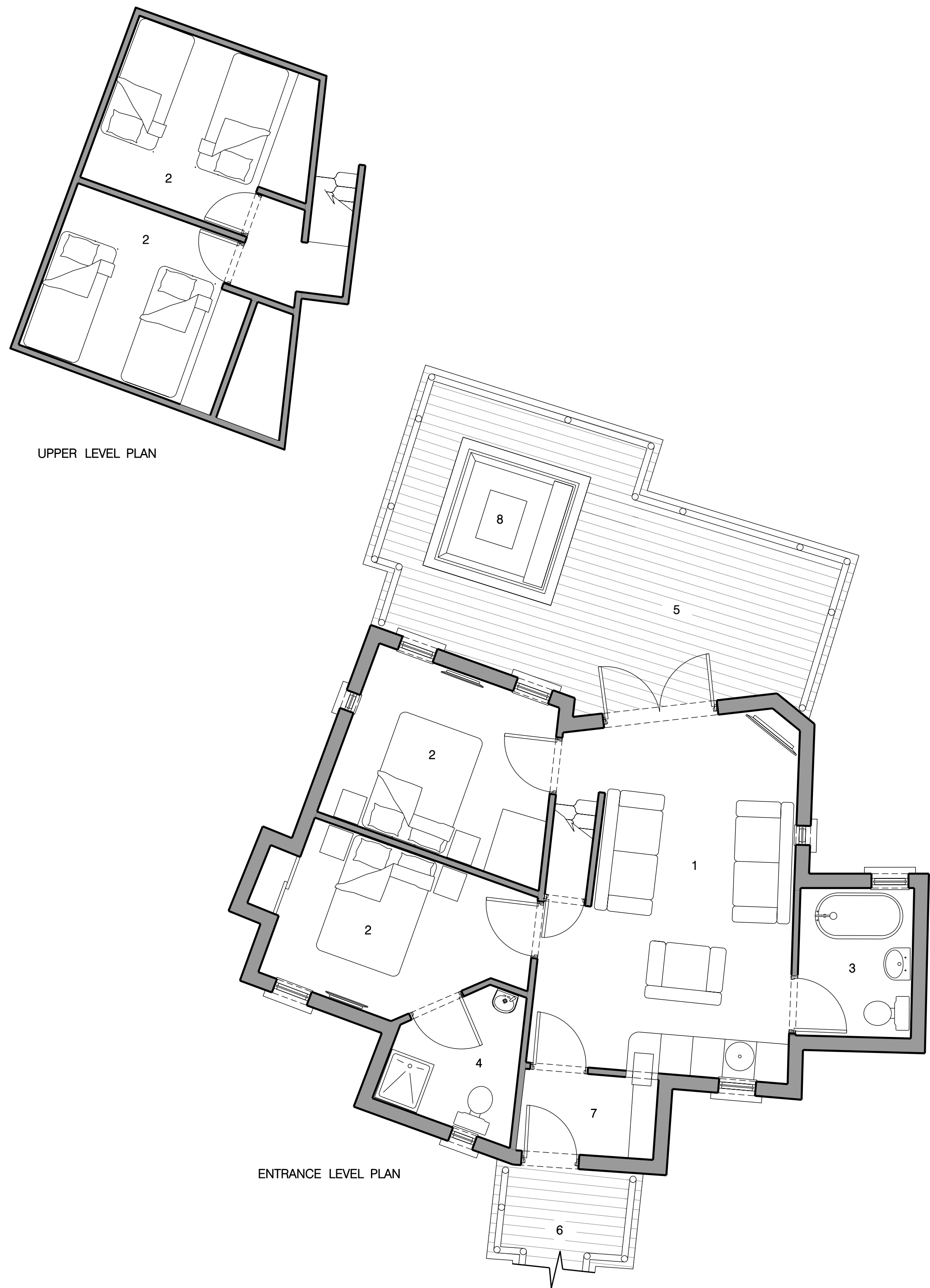


TREEHOUSE CONCEPT 1



TREEHOUSE CONCEPT 2

- KEY
- 1 LIVING AREA w/ KITCHENETTE
 - 2 BEDROOM
 - 3 BATHROOM
 - 4 ENSUITE BATHROOM
 - 5 DECK AREA
 - 6 ENTRANCE
 - 7 ENTRANCE LOBBY / BOOT ROOM
 - 8 HOT TUB

0m 5m

Paper size:	Revisions					Revisions				
	Rev	Date	By	Description	Checked	Approved	Rev	Date	By	Description
A1	P1	02.12.13	BF	PRELIMINARY ISSUE						
	P2	05.12.13	RH	PRELIMINARY ISSUE						
	P3	21.01.14	RH	PLANNING ISSUE						
	P4	06.02.14	RH	PLANNING ISSUE						

NOTE:
INTERNAL LAYOUTS ARE FOR
ILLUSTRATIVE PURPOSES ONLY

Notes:	Architect / Originator: Jerry Tate Architects		Holhouse, 274 Richmond Road, London E8 3QW Tel: +44 (0)20 7241 7481 Email: studio@jerrytatearchitects.com		Do not scale. All dimensions to be checked on site. This drawing is copyright.
	Blue Forest		Project: Alton Towers Accommodation		Date of Origin: 15.11.13
Client Sign Off	Drawing Title: Proposed Treehouse Plans: Concept 1 & Concept 2		Scale/s: 1:50		Drawn By: BF
	Drawing Number: ATR JTA PR AL 100 P4		Drawing Status: PLANNING		