

General Notes:  
Copyright of this drawing is vested in the Architect and it must not be copied or reproduced without consent. Only figured dimensions are to be taken from this drawing. All contractors must visit the site and be responsible for taking and checking all dimensions relative to their work.

**DO NOT SCALE OFF THIS DRAWING - IF IN DOUBT ASK.**

Drawings based on survey information received  
Copies available on request.

All drawings to be read in conjunction with all relevant Structural and M&E Engineers drawings and specifications.

**Contractor Design Development:**  
Details and general arrangement information contained within these drawings outlines the concept approach for materials, components and specialist systems only. Aspects of the design require development not possible at pre-construction phases of the project. The main contractor and associated sub-contractors are required to develop and validate the detailed design accordingly in conjunction with project specifications, surveys and environmental data .

**Notify the Architect immediately of any significant variation between the principle and the clarified design.**

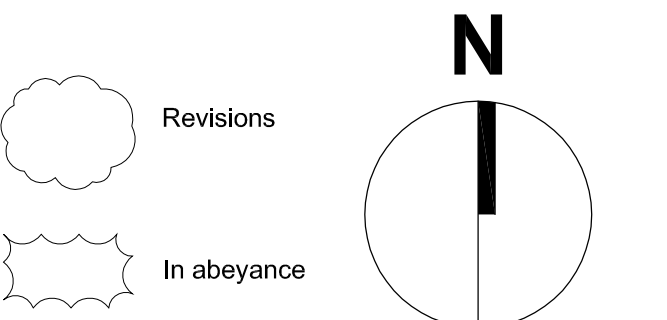
Significant hazards relative to the architectural design shown on this drawing have been assessed and highlighted with reasonable skill and care using a warning triangle system.

This drawing is to be read in conjunction with all other hazards/risks which have been identified and recorded within the construction phase H&S plan.

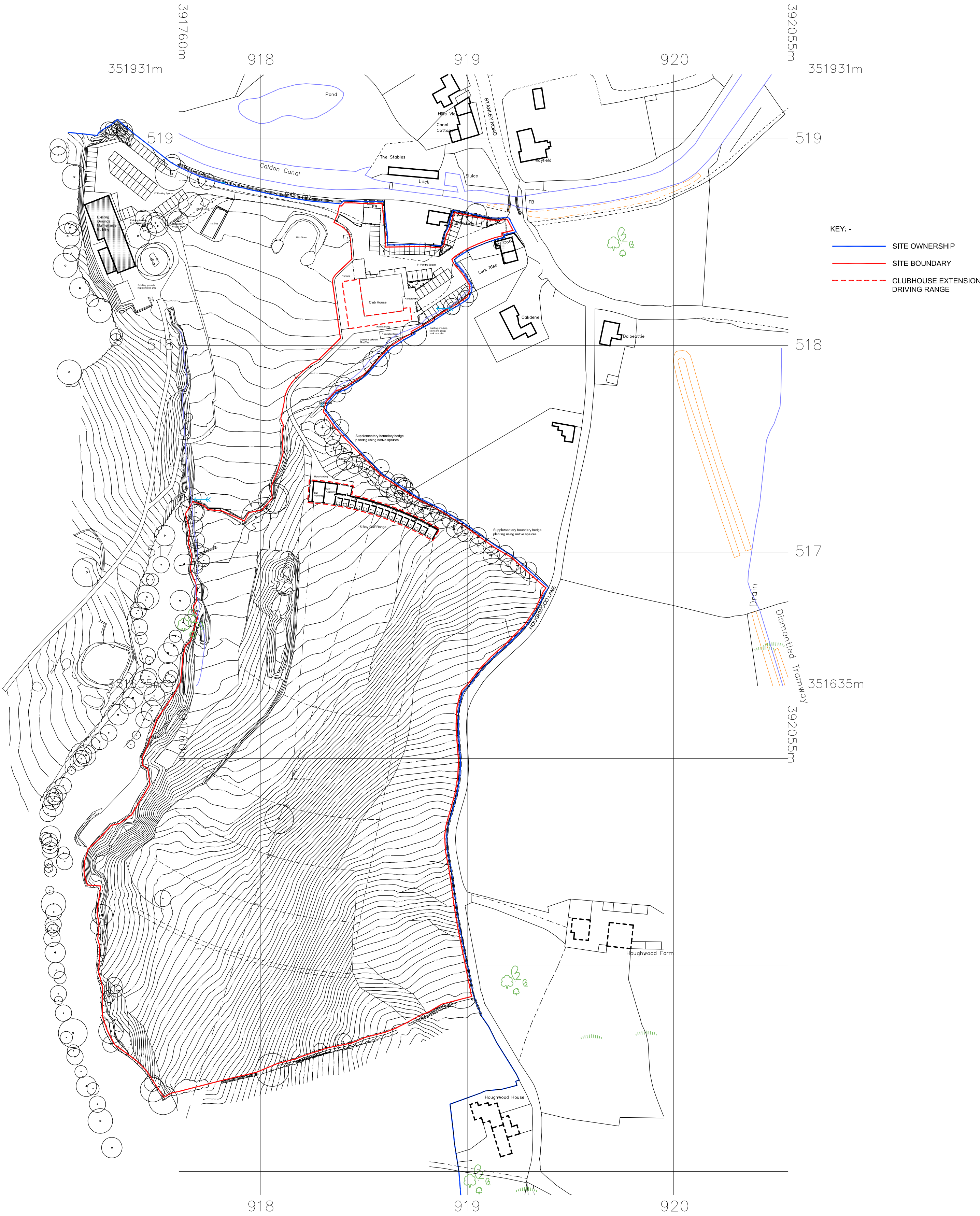
It is assumed that all works on this drawing will be carried out by a competent contractor working, where appropriate, to an approved method statement.

Significant hazards are defined as:-

- Those not likely to be obvious to a competent contractor or other designers.
- Those of an unusual nature.
- Those likely to be difficult to manage effectively.



Revisions  
In abeyance



A	Boundary lines updated.	KS/IS	07.02.14
-	PLANNING ISSUE.	KS/IS	30.01.14
Rev:	Details:	By / Chk:	Date:

## AssociatedArchitects

1 Severn Street Place • The Mailbox  
Birmingham • B1 1SE  
T +44 (0)121 233 6600  
F +44 (0)121 200 1564  
mail@associated-architects.co.uk  
www.associated-architects.co.uk



Client:	<b>Greenway Hall Golf Club</b>
Project:	<b>Golf Course Masterplan</b>
Drawing Title:	<b>Site Location Plan</b>
Scale:	1:1250 @ A1
Status:	<b>PLANNING</b>
This drawing is copyright of Associated Architects LLP. Do not scale from this drawing - Refer to figured dimensions only. Contractor to notify AA of any discrepancies or site variations immediately.	
<b>3252 AL (0) 010</b>	<b>A</b>

