

FLOODLIGHTING EQUIPMENT:

6 x 13.5m MASTS (M1-M6)
M1,M3,M4,M6..... 1 x AL5779/2KW/MH-TS2000W/XL
..... 1 x AL5780/2KW/MH-TS2000W/XL
M2,M5..... 3 x AL5780/2KW/MH-TS2000W/XL

6 x 10m MASTS (M7-M12)
M7,M9..... 1 x AL5216/1000/HIT + AL5299 COWL
..... 1 x AL5322/150/HIT
M8..... 2 x AL5216/1000/HIT + AL5299 COWL
..... 1 x AL5322/150/HIT

M10,M12..... 1 x AL5216/1000/HIT + AL5299 COWL
M11..... 2 x AL5216/1000/HIT + AL5299 COWL

6 x AL10117/0/SONE BOLLARD

LAMPS: (VENTURE)

2KW MH-TS2000W/XL/K12/745 (230 000 INITIAL Lm)
1000W HIT (80 000 INITIAL Lm)
250W HIT (55 000 INITIAL Lm)
70W SON-E (5 600 INITIAL Lm)

ILLUMINANCE LEVELS:

INITIAL (100 Hrs)
E.i.ave = 270 LUX

MAINTAINED (4000 Hrs)
E.m.ave = 208 LUX

UNIFORMITY
Emin/Eave = 0.74

MUGA:
INITIAL (100 Hrs)
E.i.ave = 187 LUX

MAINTAINED (4000 Hrs)
E.m.ave = 144 LUX

UNIFORMITY
Emin/Eave = 0.64

GRID VALUES IN LUX
GRID INTERVAL = 5m
CONTOUR VALUES IN LUX
CONTOURS 2.5,10,25,50 LUX

MAINTENANCE FACTOR = 0.77



Lighting Project: EXTERNAL FLOODLIGHTING

Title: LEEK CSOB FC

Design Ref: UMS8264/3

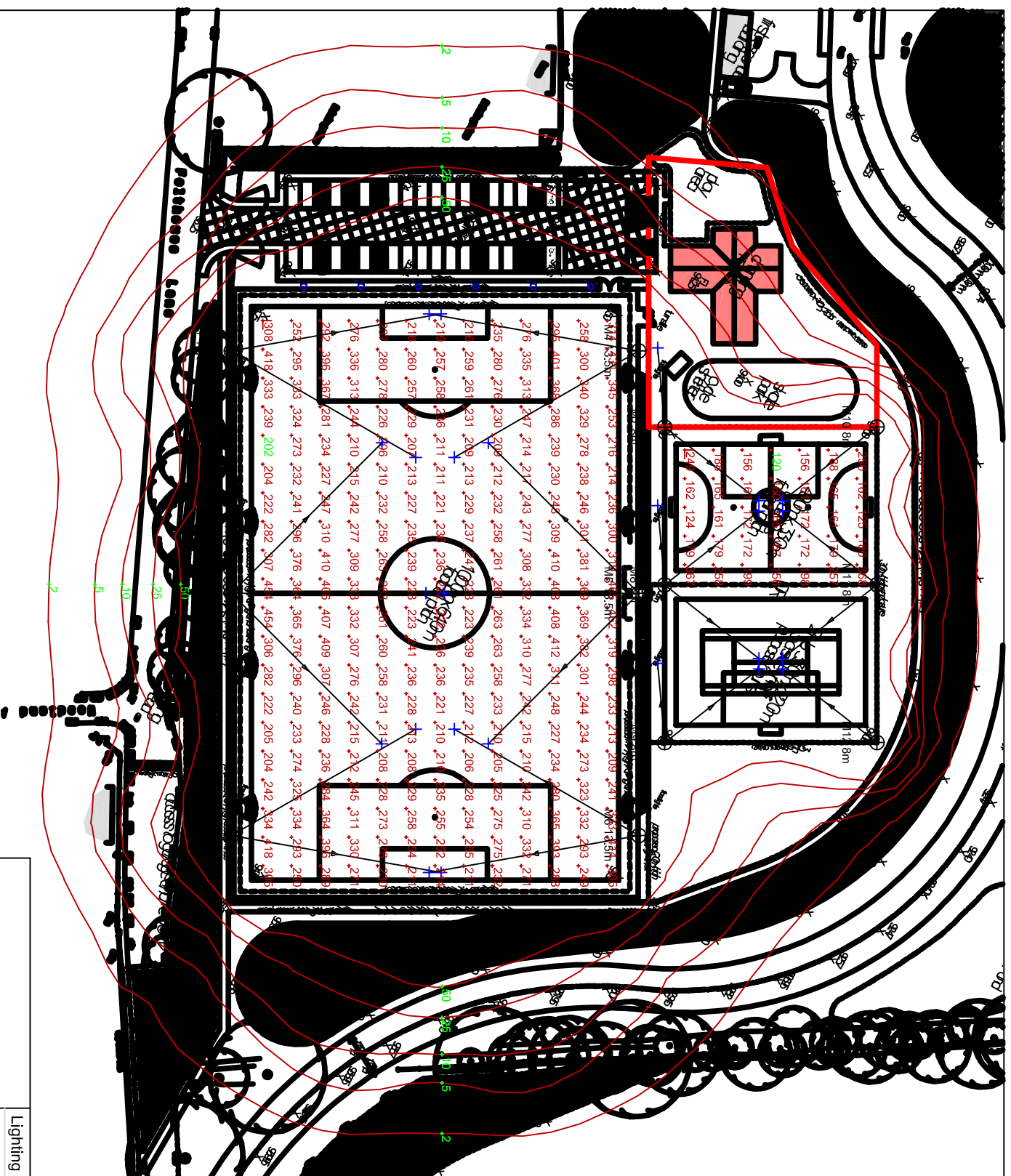
Design By: ROB SCOTT

Date: 14/09/2012 **Scale:** 1:500 @ A2

Revision(s) From Previous Design:

5 MAST SYSTEM

Home page: www.lightingsport.com



© Copyright
Abacus Lighting
All rights reserved

This Lighting Design / Scheme and results given are based on the specific performance of Abacus Lighting products. This design and supporting documents are the sole property of Abacus Lighting Limited. This design and supporting documents must not be reproduced in any way without the written permission of Abacus Lighting. Any use of this design with non-Abacus luminaires after planning has been submitted may breach planning consent.