

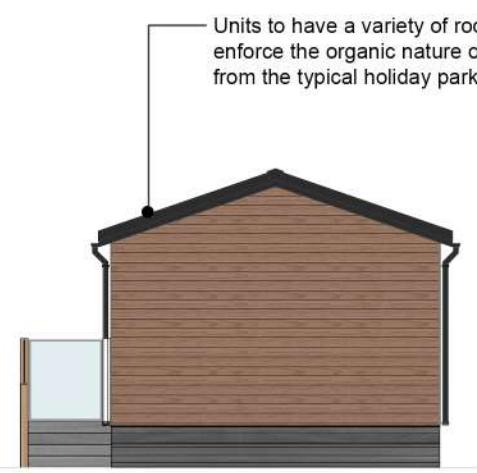
Accommodation to be deeply embedded into the landscaping positioned so to create an organic feel to the area and provide remarkable views of the unique landscape from every plot



FLOOR PLAN

The accommodation will include large open plan areas with loose high quality furniture and top end appliances to maximise comfort and the experience. The kitchens are equipped with items such as 5-burner hobs and integrated appliances including dishwashers and wine coolers. All areas within the accommodation will have bespoke lighting to add to the large amount of natural light provided by the full height windows.

Large spacious bedrooms to have movable furniture such as dressing tables, beds and bedside tables. All rooms to have deep pile carpets or solid timber floors and a palette of finishes carefully selected by interior designers. The bathrooms will also be equipped with high-end fittings and decor such as free standing baths and double vanities to provide the highest level of quality for users.

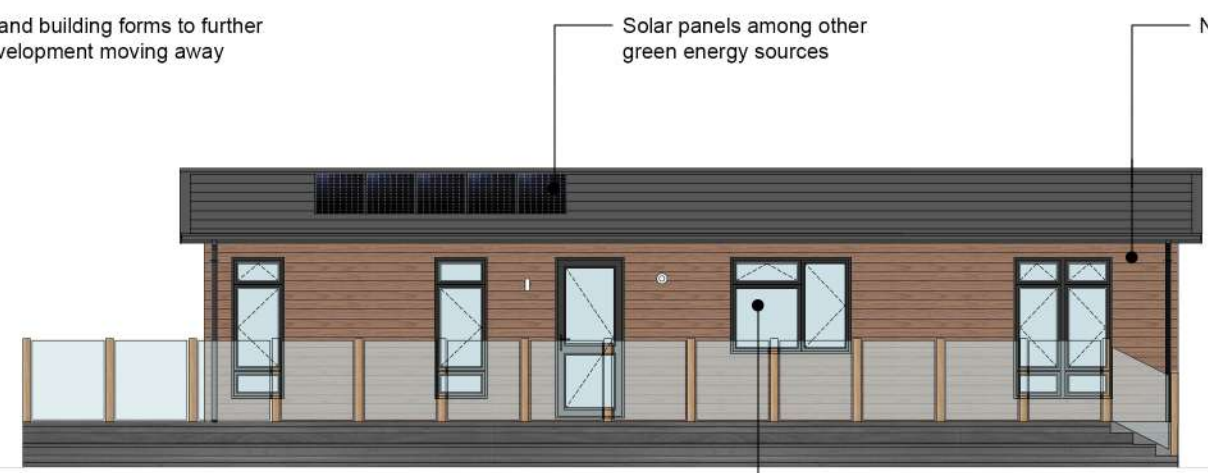


LEFT ELEVATION



RIGHT ELEVATION

Bespoke glass balustrades and decking designed specifically to suit each plot



FRONT ELEVATION



REAR ELEVATION

Solar panels among other green energy sources

Natural timber cladding

Large format high performance windows and doors to provide superior levels of natural light whilst minimising both solar gain and heat loss.

Roofs, walls and floors all to exceed the requirements for energy performance.

All accommodation to have smart controls throughout to maximise efficiency.

Timber skirts to units

SCALE :



C	MATERIALS AND ANNOTATIONS ADDED	21.02.24
B	MATERIALS AND DECK ADDED	14.09.23
A	TITLE UPDATED FOLLOWING L.A. COMMENTS	21.08.23
Revision	Description	Date



www.nbda-architects.co.uk Tel: 01625 575500

Client LAVER LEISURE (OAKMOOR) LTD

Project MONEYSTONE PARK DEVELOPMENT

Drawing PROPOSED LODGES
SINGLE LODGE END DECK
GA PLANS AND ELEVATIONS

Drawing No: 1733-LV-022 Revision C
Scale 1:100@A3 Date 25.10.19 Drawn T.J.F.

A3 Drawing