



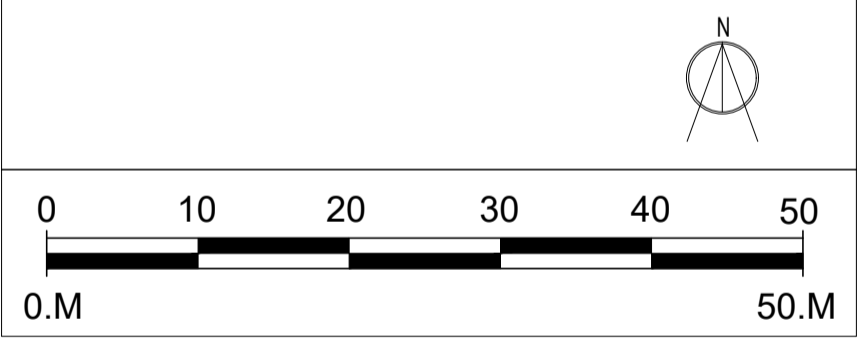
KEY

- Proposed Moneystone Park Bridleway
- Route within the planning application boundary incorporating footpath and cycle route.
- Future Water Sports Area (TO FORM PART OF FUTURE RESERVED MATTERS APPLICATION)
- Future Archery Centre (TO FORM PART OF FUTURE RESERVED MATTERS APPLICATION)

LODGE KEY

- 54 No. 42'6"x14'6"
- 136 No. 42'6"x20'6"

TOTAL - 190 No. Units



J	PARKING/ROAD MATERIAL & LODGE LEVELS UPDATED.	24.08.23
H	SCALE BAR UPDATED	09.08.23
G	Q3 EAST LAYOUT UPDATED-OUTFALL ADDED	15.12.20
Revision	Description	Date

NB Architects
DA

www.nbda-architects.co.uk Tel 01625 575550

Client **LAVER LEISURE (OAKAMoor) LTD**

Project **MONEYSTONE PARK DEVELOPMENT**

Drawing **QUARRY 1 WEST MASTERPLAN**

Drawing No. 1733-MS-023 Revision J
Scale 1:500@A1 Date 17.06.19 Drawn T.J.F

A1 Drawing