

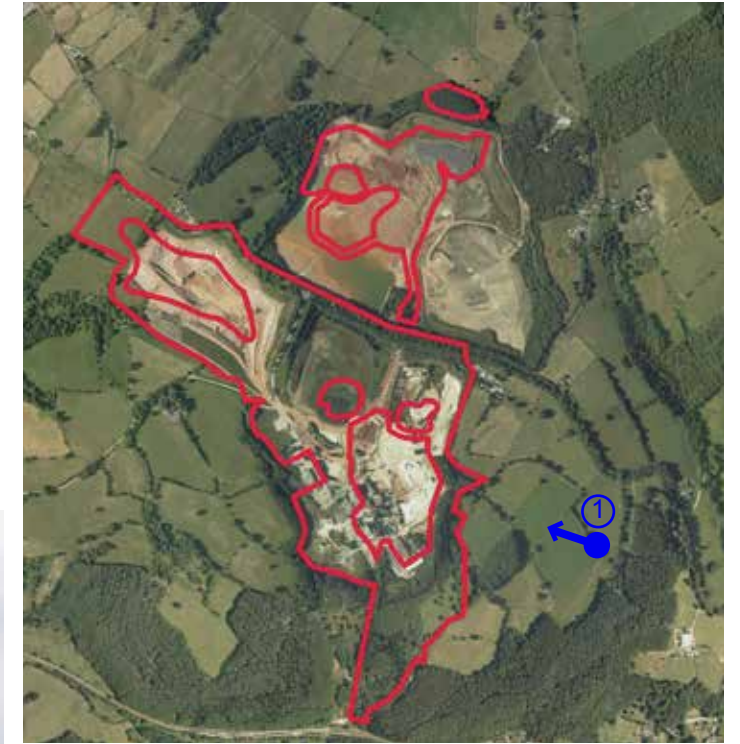
APPENDIX 8.2: VIEWS AND PHOTOMONTAGES

In accordance with the selected views as identified in Figure 8.8, the document is divided into two main sections:

- Key Views. This includes the views which were assessed to have the greatest potential visibility to the development and as such were tested using wirelines and photomontages views to assess impact.
- Potential long distance views. Views that were initially assessed as having potential visibility, but following site inspection have been found to have no view of the development. Site photography is included to demonstrate this.

Key Views

View 1 Existing
View from Staffordshire Moorlands Walk public footpath



View 1 Proposed
View from Staffordshire Moorlands Walk public footpath

approximate extent of proposed solar
farm - (screened from view)



VIEWPOINT DATA

GRID REFERENCE:
E 405228.76
N 345528.73

ELEVATION: 189.70 AOD

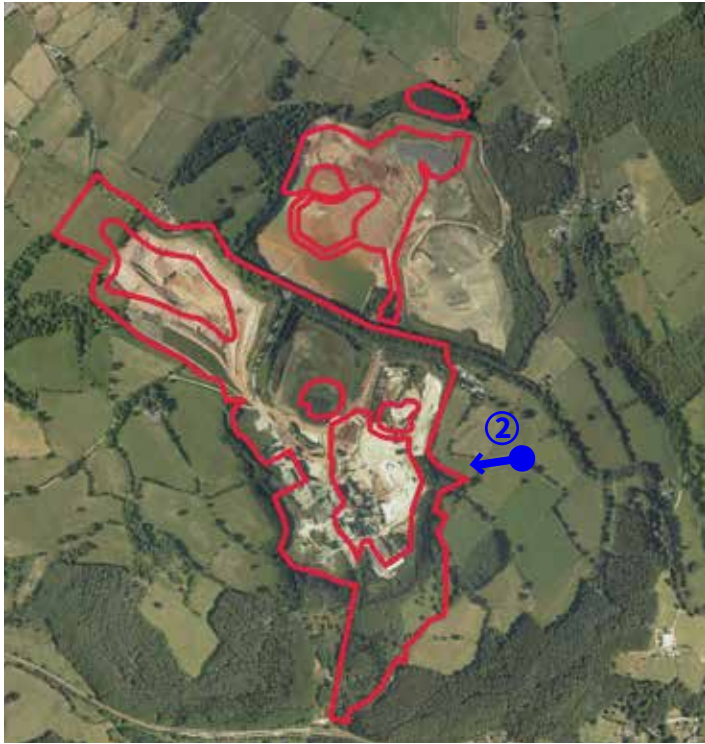
WIREFRAME / PHOTOGRAPH:

HEIGHT ABOVE GROUND: 1.65m
CAMERA & LENS: Digital SLR with 40mm lens equivalent
HORIZONTAL VIEW ANGLE: approx.40°
VIEWING DISTANCE: 500mm
NUMBER OF FRAMES: 1 frame per A3 sheet

DEVELOPMENT VISIBILITY:

DEVELOPMENT VISIBLE: No
DISTANCE TO NEW BUILDING: approx. 512.8m

View 2 Existing
View from Crowtrees Footpath



View 2 Proposed
View from Crowtrees Footpath

approximate extent of proposed solar
farm - (screened from view)



VIEWPOINT DATA

GRID REFERENCE:
E 405088.66
N 345737.14

ELEVATION: 190.21 AOD

WIREFRAME / PHOTOGRAPH:

HEIGHT ABOVE GROUND: 1.62m
CAMERA & LENS: Digital SLR with 40mm lens equivalent
HORIZONTAL VIEW ANGLE: approx.40°
VIEWING DISTANCE: 500mm
NUMBER OF FRAMES: 1 frame per A3 sheet

DEVELOPMENT VISIBILITY:

DEVELOPMENT VISIBLE: No
DISTANCE TO NEW BUILDING: approx.300m

View 3 Existing
View from Site Entrance, Whiston Eaves



View 3 Proposed
View from Site Entrance, Whiston Eaves



VIEWPOINT DATA

GRID REFERENCE:
E 404477.85
N 346191.91

ELEVATION: 192.41 AOD

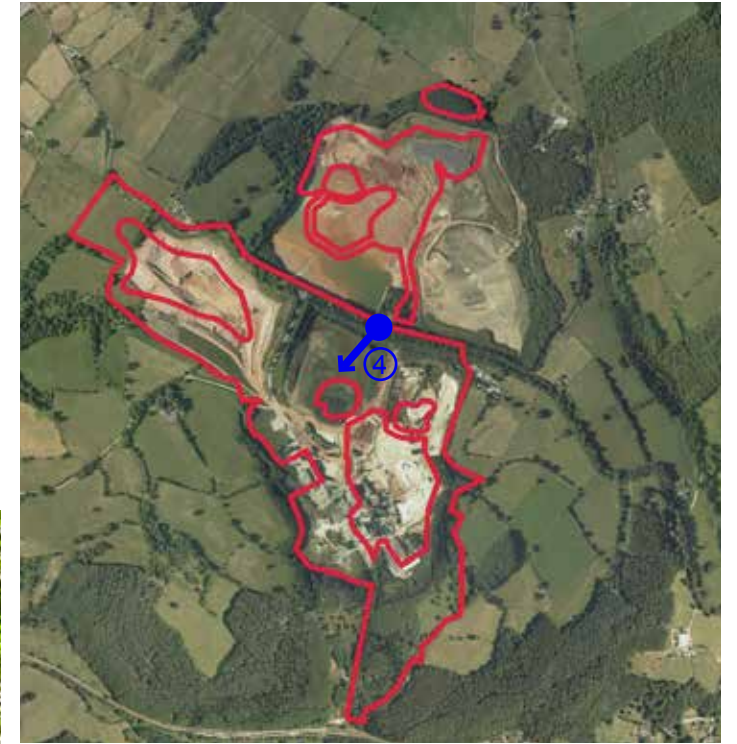
WIREFRAME / PHOTOGRAPH:

HEIGHT ABOVE GROUND: 1.63M
CAMERA & LENS: Digital SLR with 40mm lens equivalent
HORIZONTAL VIEW ANGLE: approx. 40°
VIEWING DISTANCE: 500mm
NUMBER OF FRAMES: 1 frame per A3 sheet

DEVELOPMENT VISIBILITY:

DEVELOPMENT VISIBLE: No
DISTANCE TO NEW BUILDING: approx. 120 m

View 4 Existing
View from Eaves Lane, Crowtrees, South



View 4 Proposed
View from Eaves Lane, Crowtrees, South



VIEWPOINT DATA

GRID REFERENCE:
E 404650.96
N 346109.20

ELEVATION: 198.20 AOD

WIREFRAME / PHOTOGRAPH:

HEIGHT ABOVE GROUND: 1.63m
CAMERA & LENS: Digital SLR with 40mm lens equivalent
HORIZONTAL VIEW ANGLE: approx. 40°
VIEWING DISTANCE: 500mm
NUMBER OF FRAMES: 1 frame per A3 sheet

DEVELOPMENT VISIBILITY:

DEVELOPMENT VISIBLE: No
DISTANCE TO NEW BUILDING: approx. 30 m

View 5 Existing
View from Eaves Lane, Crowtrees, North



View 5 Proposed
View from Eaves Lane, Crowtrees, North

approximate extent of
proposed solar farm -
(screened from view)



VIEWPOINT DATA

GRID REFERENCE:
E 404650.56
N 346103.42

ELEVATION: 198.14 AOD

WIREFRAME / PHOTOGRAPH:

HEIGHT ABOVE GROUND: 1.64m
CAMERA & LENS: Digital SLR with 40mm lens equivalent
HORIZONTAL VIEW ANGLE: approx.40°
VIEWING DISTANCE: 500mm
NUMBER OF FRAMES: 1 frame per A3 sheet

DEVELOPMENT VISIBILITY:

DEVELOPMENT VISIBLE: No
DISTANCE TO NEW BUILDING: approx. 200 m

View 6 Existing
View from Cottage Farm, Eaves Lane



View 6 Proposed
View from Cottage Farm, Eaves Lane

approximate extent of
proposed solar farm -
(screened from view)



VIEWPOINT DATA

GRID REFERENCE:
E 404031.15
N 346430.00

ELEVATION: 181.70 AOD

WIREFRAME / PHOTOGRAPH:

HEIGHT ABOVE GROUND: 1.68m
CAMERA & LENS: Digital SLR with 40mm lens equivalent
HORIZONTAL VIEW ANGLE: approx.40°
VIEWING DISTANCE: 500mm
NUMBER OF FRAMES: 1 frame per A3 sheet

DEVELOPMENT VISIBILITY:

DEVELOPMENT VISIBLE: Yes
DISTANCE TO NEW BUILDING: approx. 50.9 m

View 15 Existing
View from Blackley Lane



View 15 Proposed
View from Blackley Lane



VIEWPOINT DATA

GRID REFERENCE:
E 404959.5
N 346708.47

ELEVATION: 240.59 AOD

WIREFRAME / PHOTOGRAPH:

HEIGHT ABOVE GROUND: 1.65m
CAMERA & LENS: Digital SLR with 40mm lens equivalent
HORIZONTAL VIEW ANGLE: approx.40°
VIEWING DISTANCE: 500mm
NUMBER OF FRAMES: 1 frame per A3 sheet

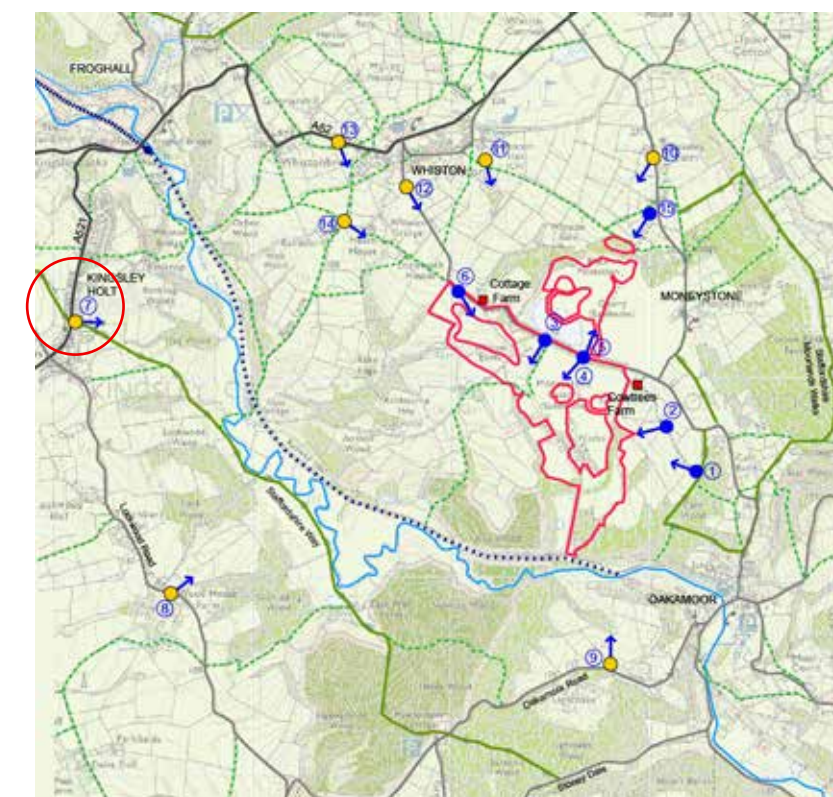
DEVELOPMENT VISIBILITY:

DEVELOPMENT VISIBLE: No
DISTANCE TO NEW BUILDING: 100m

Potential Long Distance Views



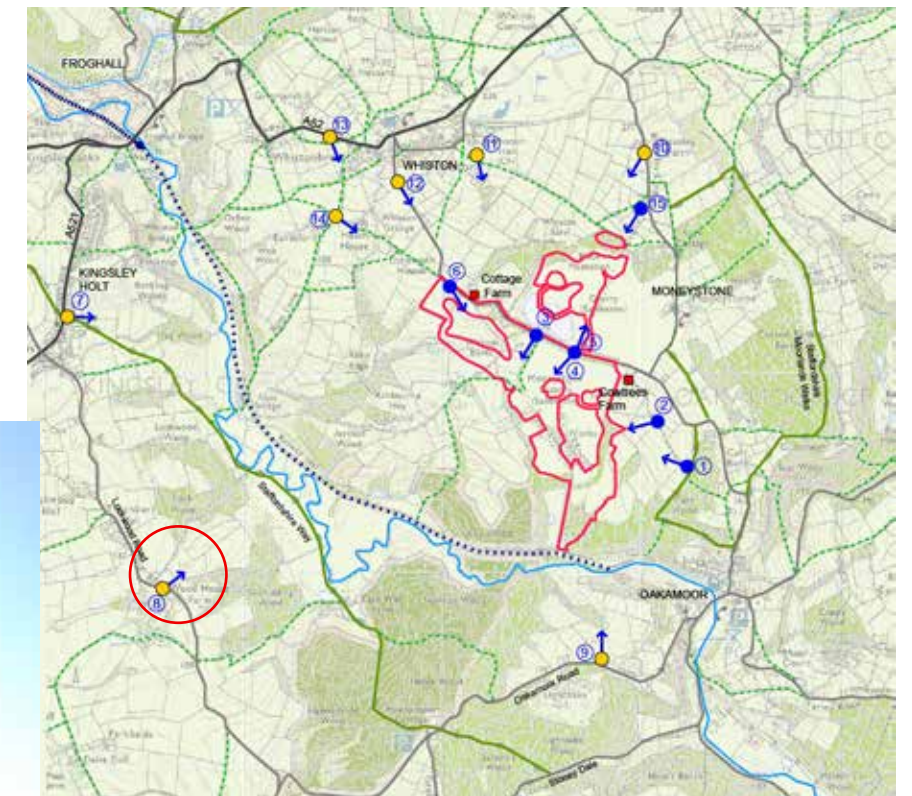
View 7 Existing/Equivalent to Proposed View*
View from A521, Kingsley Holt



*No photomontage produced - proposed view predicted to have negligible visual impact due to distance between viewpoint & site.



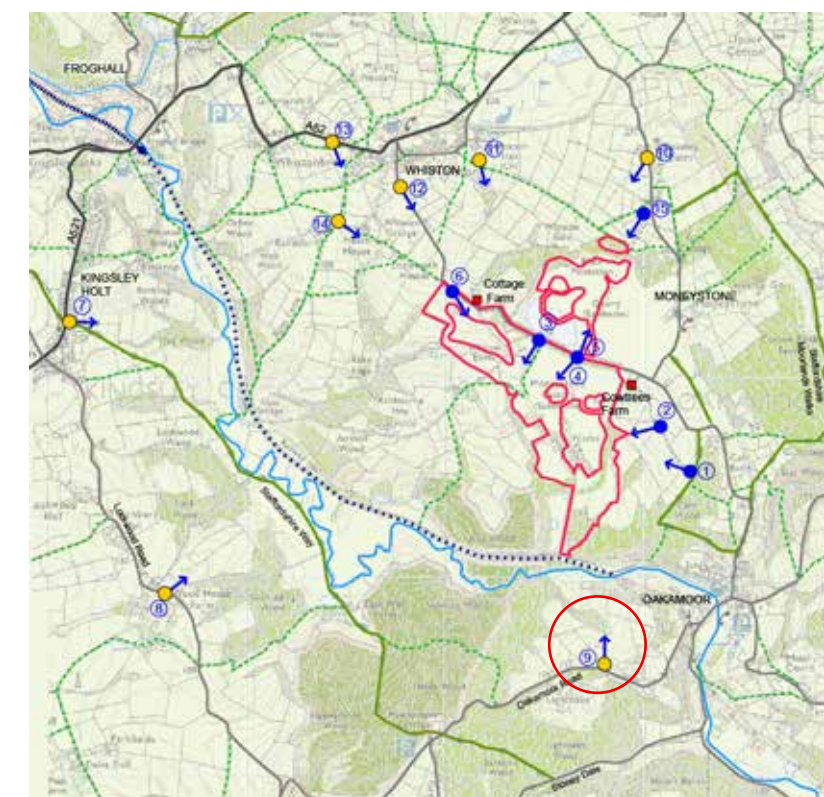
View 8 Existing/Equivalent to Proposed View*
View from Wood House Farm, Lockwood Road



*No photomontage produced - proposed view predicted to have a benign visual impact due to distance between viewpoint & site.

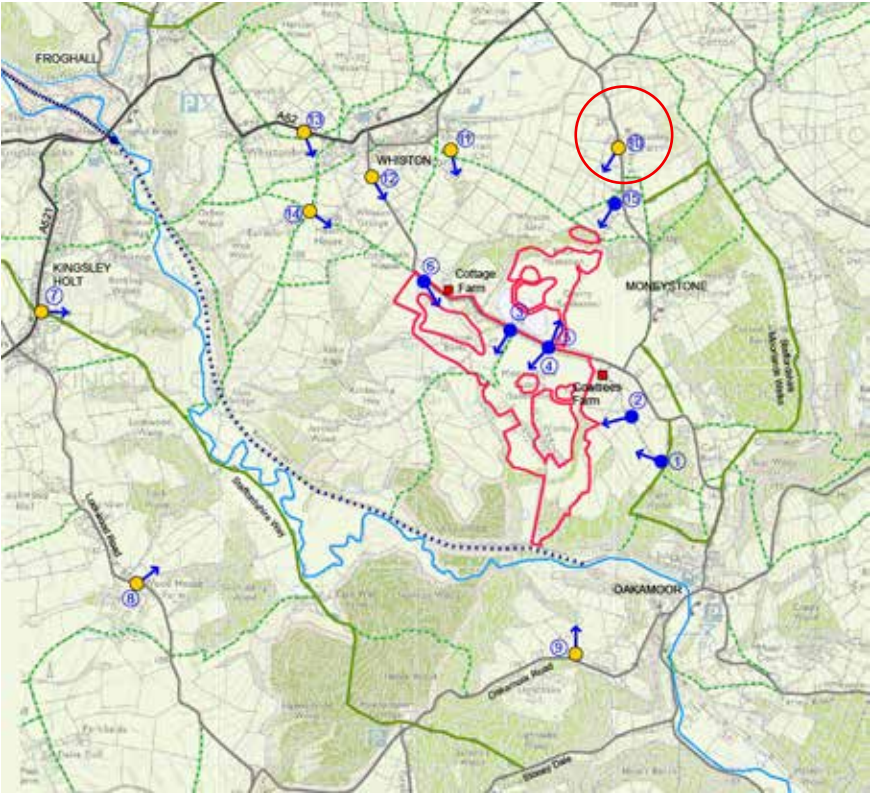


View 9 Existing/Equivalent to Proposed View*
View from Oakamoor Road



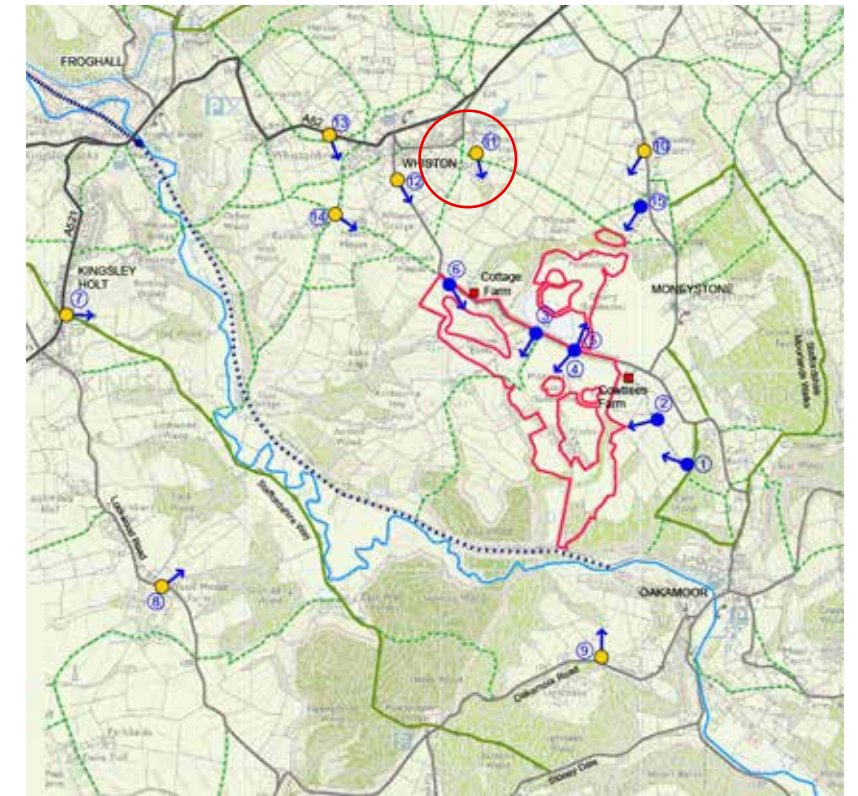
*No photomontage produced - proposed view predicted to have a benign visual impact due to distance between viewpoint & site.

*No photomontage produced - proposed view predicted to have negligible visual impact due to distance between viewpoint & site.



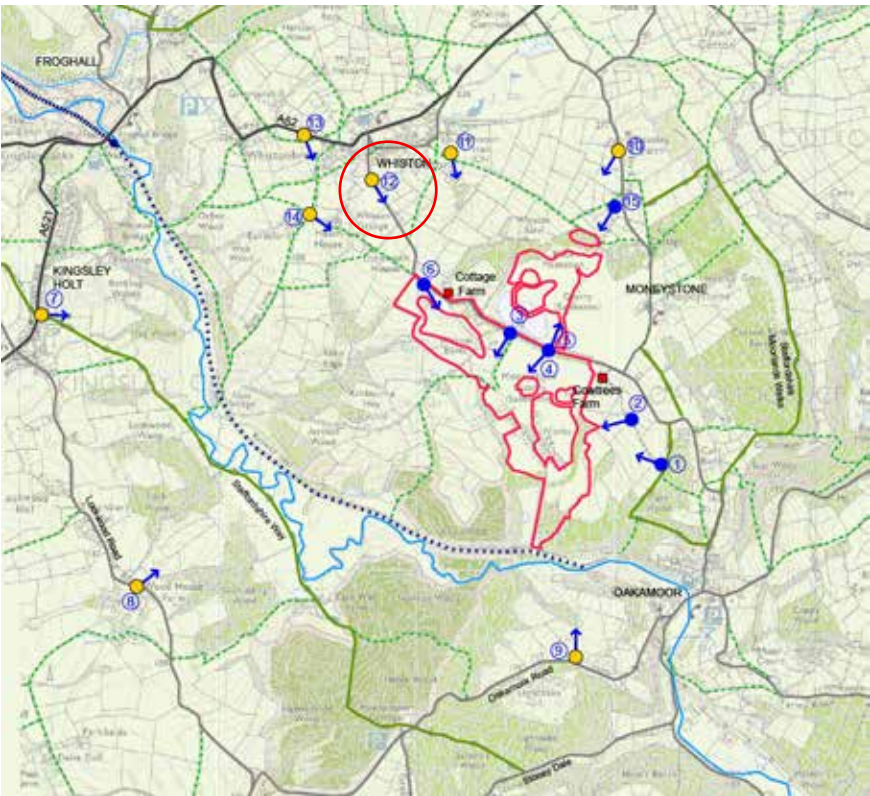
View 10 Existing/Equivalent to Proposed View*
View from Blakeley Lane

*No photomontage produced - proposed view predicted to have negligible visual impact due to distance between viewpoint & site.



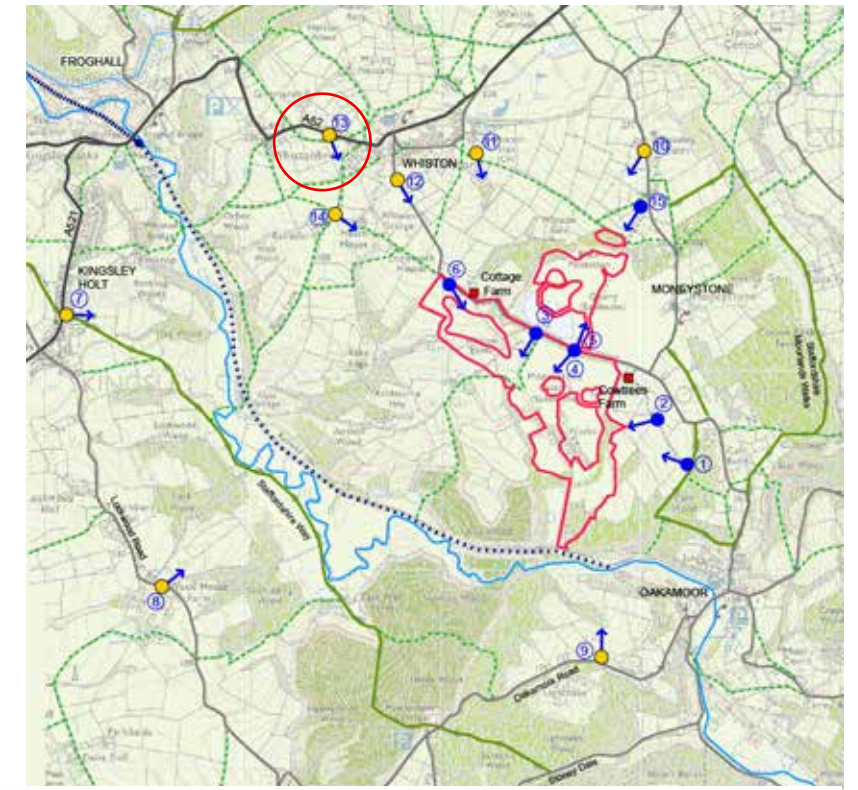
View 11 Existing/Equivalent to Proposed View*
View from Whiston Hall

*No photomontage produced - proposed view predicted to have negligible visual impact due to distance between viewpoint & site.



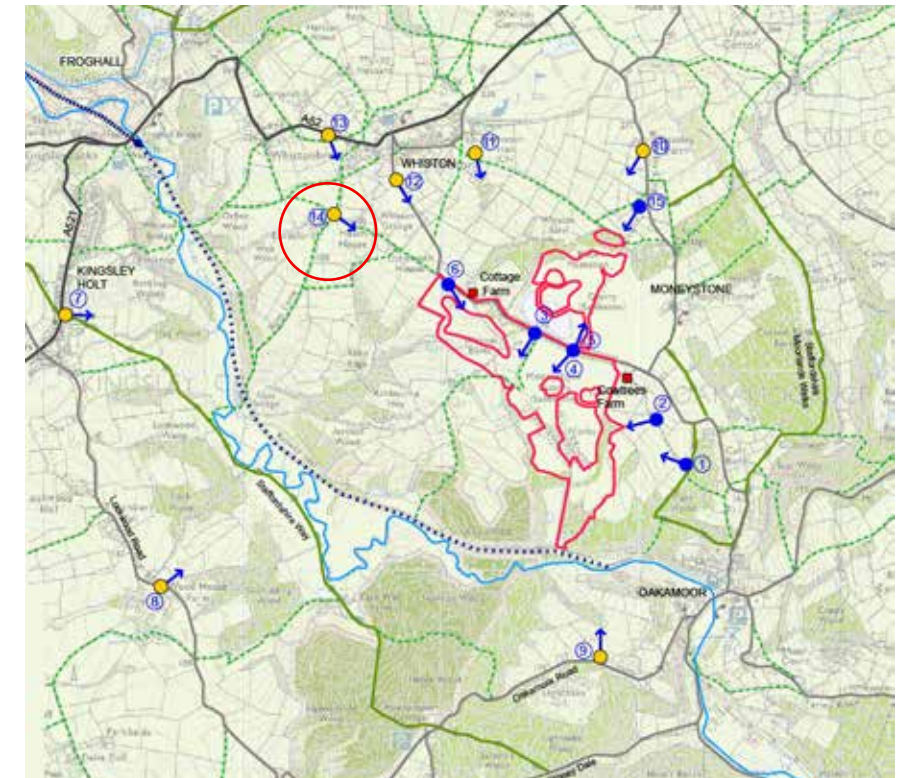
View 12 Existing/Equivalent to Proposed View*
View from Whiston, off Eaves Lane

*No photomontage produced - proposed view predicted to have negligible visual impact due to distance between viewpoint & site.



View 13 Existing/Equivalent to Proposed View*
View from A52

*No photomontage produced - proposed view predicted to have negligible visual impact due to distance between viewpoint & site.



View 14 Existing/Equivalent to Proposed View
View from Ross Lane

