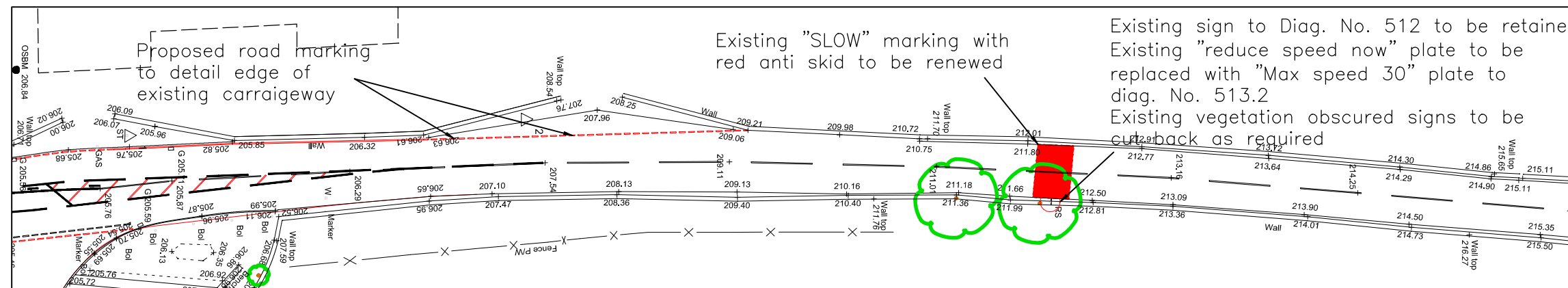
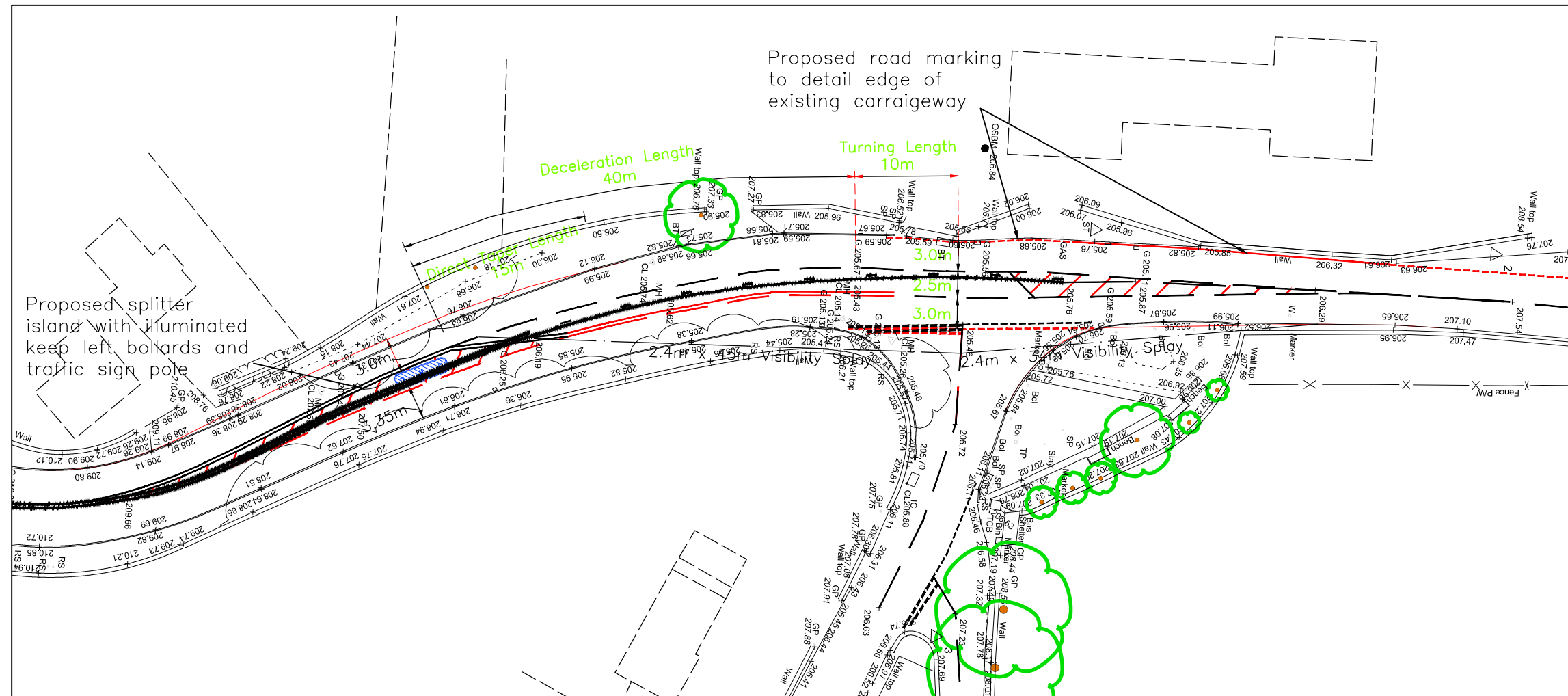
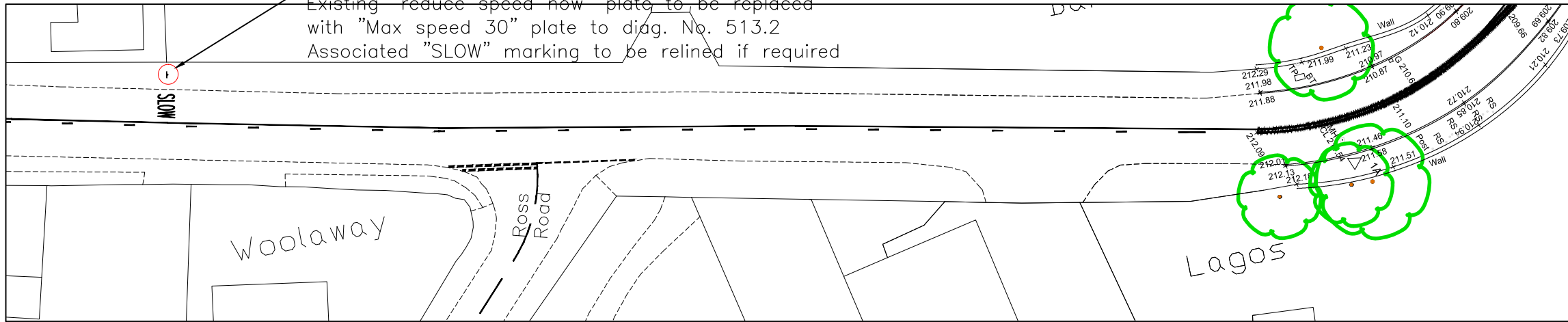


**DO NOT SCALE**

Existing sign to Diag. No. 512 to be retained  
 Existing "reduce speed now" plate to be replaced with "Max speed 30" plate to diag. No. 513.2  
 Associated "SLOW" marking to be relined if required



**NOTES**

This data is based upon the O.S.map with the permission of Her Majesty's Stationary Office, c Crown Copyright. Unauthorised reproduction infringes Crown Copyright and may lead to prosecution or civil proceedings. Licence Number AL100017728

Do not scale from drawing.  
 Topography to be confirmed by topographical survey prior to detailed design. The accuracy of O.S. map data cannot be relied upon to confirm deliverability.

Existing lateral visibility and forward stopping sight distance visibility splays onto the A52 do not comply with those recommended by the Design Manual for Roads and Bridges for 40mph.

**Design Specification:**

- Through Lane width = 3m
- Turning Lane width = 3m
- Turning length = 10m
- Deceleration length = 40m
- Direct Taper length = 15m
- Taper Length = 1:20
- Design Speed = 70kph

C	08.06.16	Title Amended	KK	BL	BL
B	22.12.14	Visibility Splay Amended	KK	BL	BL
A	27.10.10	First Issue	MB	DB	BL
REV	DATE	DESCRIPTION	BY	CHK	APP

REVISIONS					
CLIENT					
<b>Laver Leisure (Oakamoor) Ltd</b>					

PROJECT					
<b>Moneystone Quarry, Staffordshire</b>					

TITLE					
<b>Proposed Layout of A52/Whiston Eaves Lane Junction</b>					

9th Floor Manchester One, Manchester, M1 3LF  
 Tel +44(0)161 236 1018  
 Email info.manchester@rhdhv.com  
 Website www.royalhaskoningdhv.com

DRAWN	MB	CHECKED	DB	APPROVED	BL
DATE	27.10.2010	DATE	27.10.2010	DATE	27.10.2010
SCALE	1:500 @ A3	STATUS	For Information		

DRAWING No.	<b>PB1608-SK001</b>	REVISION	<b>C</b>
-------------	---------------------	----------	----------