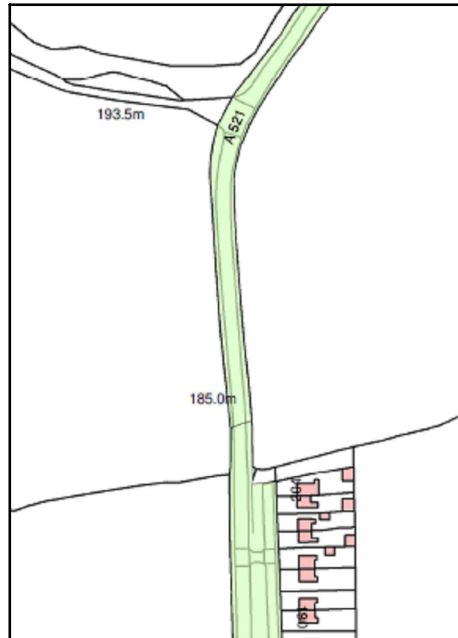
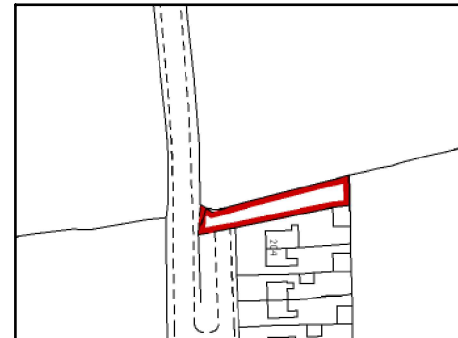


NORTH SOUTH AERIAL VIEW



ADOPTED HIGHWAY PLAN

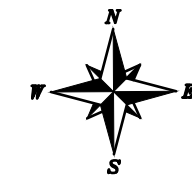
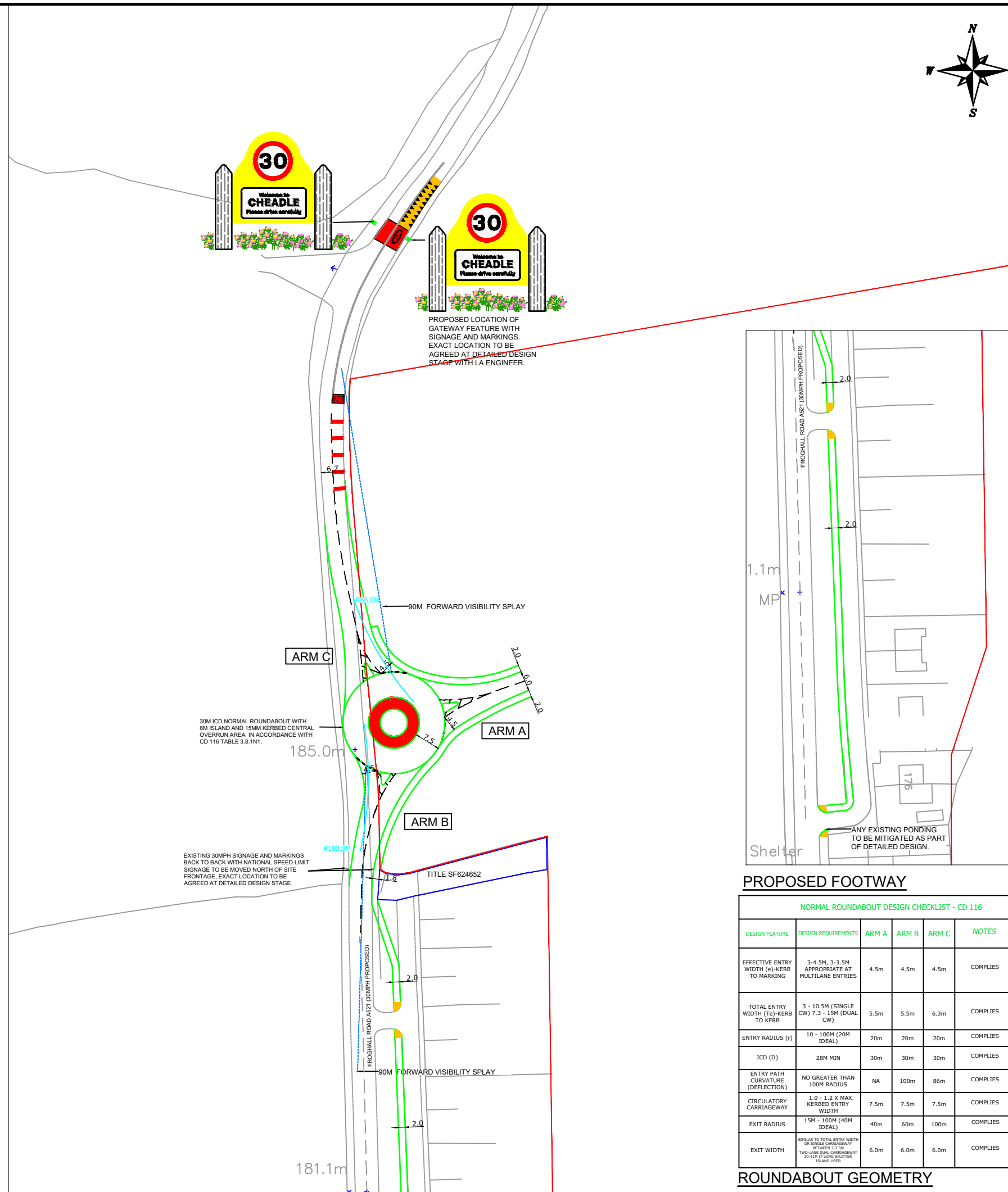


TITLE PLAN SF624652



GATEWAY FEATURE EXAMPLE

Z:\projects\3277 Frogghall Road, Cheadle, Staffordshire\CAD\Croft Drawings\3277-F06 Rev A.dwg



NOTES
 THIS IS NOT A CONSTRUCTION DRAWING AND IS FOR INDICATIVE PURPOSES ONLY.
 THE DRAWING WILL BE SUBJECT TO CHANGE FOLLOWING LOCAL AUTHORITY REVIEW AND CONFIRMATION OF PUBLIC HIGHWAY AND THIRD PARTY LAND BOUNDARIES.

- INDICATIVE SITE BOUNDARY
 - TITLE PLAN SF624652
 - DENOTES NEW KERBS
 - EXISTING ADOPTED HIGHWAY
- LOCAL AUTHORITY: STAFFORDSHIRE COUNCIL
 TOTAL AREA OF SITE: 19.35Ha



SITE LAYOUT NTS

REV	DETAILS	LB	MC	MAY 22
A	AMENDED TO RSA 1 COMMENTS			

CLIENT:
BLOOR HOMES

PROJECT:
FROGHALL ROAD, CHEADLE

DRAWING TITLE:
PROPOSED SITE ACCESS PLAN

SCALES: **1:1250 @ A3**

DRAWN: MC	CHECKED: MC	DATE: NOV 21
-----------	-------------	--------------

Croft Transport Planning & Design
 340 Deansgate
 Manchester
 M3 4LY
 Email: info@crofts.co.uk
 Tel: 0161 837 7380
 Web: www.eddisons.com/services/transport-planning

DRAWING NUMBER: 3277-F06	REVISION: A
------------------------------------	-----------------------



PROPOSED FOOTWAY

NORMAL ROUNDABOUT DESIGN CHECKLIST - CD 116

DESIGN FEATURE	DESIGN REQUIREMENTS	ARM A	ARM B	ARM C	NOTES
EFFECTIVE ENTRY WIDTH (e)-KERB TO MARKING	3-4.5M, 3-3.5M APPROPRIATE AT MULTILANE ENTRIES	4.5m	4.5m	4.5m	COMPLIES
TOTAL ENTRY WIDTH (Te)-KERB TO KERB	3 - 10.5M (SINGLE CW) 7.3 - 15M (DUAL CW)	5.5m	5.5m	6.3m	COMPLIES
ENTRY RADIUS (r)	10 - 100M (20M IDEAL)	20m	20m	20m	COMPLIES
ICD (D)	28M MIN	30m	30m	30m	COMPLIES
ENTRY PATH CURVATURE (DEFLECTION)	NO GREATER THAN 100M RADIUS	NA	100m	86m	COMPLIES
CIRCULATORY CARRIAGEWAY	1.0 - 1.2 X MAX. KERBED ENTRY WIDTH	7.5m	7.5m	7.5m	COMPLIES
EXIT RADIUS	15M - 100M (40M IDEAL)	40m	60m	100m	COMPLIES
EXIT WIDTH	SIMILAR TO TOTAL ENTRY WIDTH OR SINGLE CARRIAGEWAY BETWEEN 7.5M - 10-11M IF LONG SPLITTER ISLAND USED	6.0m	6.0m	6.0m	COMPLIES

ROUNDABOUT GEOMETRY