

ProtectaWeb Method Statement

For the installation of ProtectaWeb Tree Root Protection System

Introduction

The Wrekin Tree Root Protection System is available in 4 different depths for varied traffic loadings, each site should have a specific design detailed to ensure the correct depth of product is used.

However, unless the existing ground conditions contain very weak soils and have a low CBR the the following can apply:

- Footpath System- Geogrid and Geotextile combination with Asphalt/Resin- for Pedestrians and Cycleways, no vehicular traffic.
- 75mm- For Pedestrians Cycleways and Vehicles up to 1.5tons
- 100mm- For Cars, 4 wheel drives, vans etc up to 6tons
- 150mm- For Fire engines, removal vehicles and dust carts up to 20-30tons
- 200mm- For Construction vehicles, cranes etc 40tons and all above.

No dig System

Material List:

- ProtectaWeb 3 Dimensional Cellular Confinement System
- Root-Tex 30 minimum separation and protection fleece
- Root-Tex 10 minimum separation geotextile
- Steel 700mm staking pins
- Stapler and Staples/heavy cable ties
- 4/20mm or 40/20mm Clean Angular Stone to Bs EN 13242 and 12620
- Finish porous surfacing materials are preferable

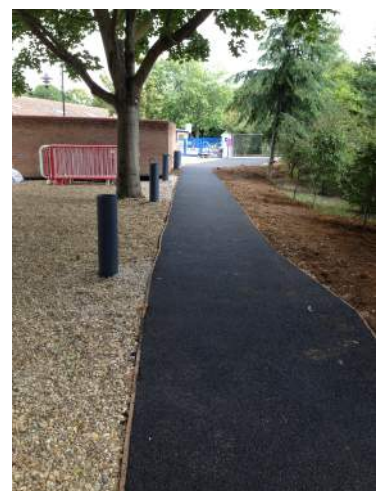
Stage 1-Ground Preparation

- Remove surface vegetation to treat with suitable herbicide to level-under the supervision of the project Arboriculturist.
- Fill any hollows that may be in the exposed ground with no fines 4/20mm clean angular stone.
- Place Root-Tex 30 Geotextile over the area to be protected ensuring laps with a minimum of 300mm.
- Mark out the area to be protected with edging detail. For Example: Timber boards.

Stage 2-Installation of ProtectaWeb TRP

- Roll out Root-Tex 30 Geotextile to cover the area to be protected.
- Insert 4 equally spaced steel pins along the the width of the panel.
- Expand the panel over the Root-Tex 30 and the pins, extend to the required length, then pin across the opposite panel end.
- Pin along the length of the panel each side.
- If full panels are not being used then ensure the cells have been expanded to their full dimension.
- Staple or cable tie any adjacent panels together.

The ProtectaWeb panels can be cut to shape if required with a heavy duty Stanley Knife.



1. Wrekin Products Ltd is continually seeking to improve our products and therefore reserves the right to alter product specifications without prior notice.
2. It is the responsibility of all users to satisfy themselves that the above data is current.
3. Wrekin cannot be held responsible for the performance of these products as conditions of use are beyond our control.

Stage 3-Filling the ProtectaWeb

Using 4/20mm or 40/20mm clean angular stone to Bs EN 13242 and 12620 (depending on the cell depth being used)

- Fill the cells of the ProtectaWeb with a 4/20mm or 40/20mm clean angular stone.
- Allow 25mm overfill for any settlement of the stone into the cells.
- If the area is to be trafficked immediately, slightly increase the amount of surcharge overfill to a maximum of 50mm over the ProtectaWeb with 4/20mm or 40/20mm clean angular stone.

Stage 4-Finish Surfacing Details

The ProtectaWeb TRP system can be surfaced with the materials listed below:

Finish 1- Block Paving

- Place Root-Tex 10 separation fabric over the filled ProtectaWeb
- Lay sand/gravel bedding material as per to manufacturers recommendations
- Place porous/standard blocks as per manufacturers instructions

Finish 2-Porous and standard Asphalt

- Slightly surcharge the ProtectaWeb with 25mm of 4/20mm or 40/20mm clean angular stone
- Place hot Asphalt as per to manufacturers instructions

Finish 3- Resin Bound Gravels

- Place Root-Tex 20 separation fabric over the filled ProtectaWeb
- Lay Asphalt carpet and resin bound gravel to the required thickness and as per the manufacturers instructions

Finish 4-Loose Gravel

- Option 1- Slightly overfill the ProtectaWeb with the clean angular stone
- Option 2- Place a 25mm thick decorative stone on top of the filled ProtectaWeb

Finish 5- CellTrack Gravel Retention System

- Place Root-Tex 10 separation geotextile over the filled ProtectaWeb
- 20mm bedding layer of 5mm single sized stone and lightly tamp
- Lay CellTrack porous pavers and fill with a 6-10mm decorative stone

Finish 6- CellTrack Grass Protection System

- Place Root-Tex 10 separation geotextile over the filled ProtectaWeb
- 70mm of Rootzone bedding layer (60% sand/40% soil) and lightly tamp
- Lay CellTrack porous pavers and fill with Rootzone mix, seed accordingly (please allow 4-6 weeks for the seed to germinate before trafficking)

NEW Finish 7- Trial-Flex

- Place Root-Tex 10 separation geotextile over the area for pedestrian protection.
- Roll over Egrid on top of the Geotextile (strength based per application)
- Cover to a depth of 50mm of TrialFlex porous flexible resin bound finish.

Finish 8- Concrete

- Place Root-Tex 10 separation Geotextile over the filled ProtectaWeb
- Cast the concrete slab over the Geotextile



1. Wrekin Products Ltd is continually seeking to improve our products and therefore reserves the right to alter product specifications without prior notice.
2. It is the responsibility of all users to satisfy themselves that the above data is current.
3. Wrekin cannot be held responsible for the performance of these products as conditions of use are beyond our control.