

Copyright of this drawing is vested in the Architect and it must not be copied or reproduced without consent. Figured dimensions only are to be taken from this drawing. All components must fit the site and be responsible for taking and checking all dimensions relative to their work. If a client's Architect is to be contacted on any variation between drawings and site conditions, CLIENTS ARE ADVISED TO CLARIFY DIMENSIONS WITH THE ARCHITECT PRIOR TO SETTING OUT AND NOT TO SCALE FROM THE DRAWING.

The existing sub soil shall be fully de-compacted in accordance with the Complete Cultivation method to the full rootable soil depth to at least 1m below finished ground level. Imported topsoil to be in accordance with BS 3882 - Excavate planting pits to a minimum depth of 200 x 200 x 250mm for all 1 litre and smaller pot grown plants & 300 x 300 x 450mm for all 2 and 3 litre pot grown shrubs. Excavate to 150mm wider and deeper than root spread for

Multi-Purpose grade free from stones, weeds, debris, clay and vegetation. It shall be of a similar PH to the existing soil. Location of topsoil source, and previous and current land use for natural bare root shrubs. Plant plants at the correct depth. Cultivation: Cultivate whole planting bed to minimum 300mm depth.

Timing: Within a few days before planting, with weather and ground conditions suitably dry and mild with no risk of frost.

Topsoil to be reinstated to minimum 450mm depth in planting areas and 200mm depth in turf areas, in layers not more than 150mm thick, treated with glyphosate min 2 weeks prior to planting. Gently firm between layers. Any stones above 20mm dia to be removed. Prior to planting the ground should be fully de-compacted.

Topsoil to be dorned generally within planting area with recessed edge below the top of perimeter kerling to retain the top mulch

Can't you planting while snow weather conditions are suitable. Do not plant during periods of frost, rain or strong winds. All plants and trees to be in accordance with the criteria as stated in BS 3336 All plants to be positioned upright, wellbalanced and with best side to front. All plants to be planted in holes excavated large enough to allow adequate root spread to a depth of minimum 75mm lower than the root system.

Remove any non-perforable containers and firm back

All plant material to comply with BS 3936 Pt 1:1992 and handled in accordance with 'Handling and Establishing Landscape

Plants: 1996. All Planting to comply with BS 4428 with plants well  
 firmed. Enmag slow release fertiliser or similar approved to be  
 applied to the base of each plant at the rate shown in the  
 schedule.

Cultivate compacted ground and apply herbicide to kill weeds and grasses. Apply herbicide to the ground surface, starting with herbicide to at least 0.5m width. Do not allow roots to dry out during prior to planting or heat up in enclosed bogs. Form trenches to the same depth as the roots, plant so that the fibrous root level matches the level of the soil. It was planted in the nursery. Firm plants in place and cover with well-rotted mulch and topsoil. Provide plastic tree guards for protection to young plants.

## Works to Existing Trees

Pruning or tree removal works to be carried out to avoid existing season by a qualified arboriculturalist. Existing trees to be pruned back to improve shape and stability and to allow improved clearance and pedestrian access along the highway. Trees to be thinned to allow retained trees and new native tree planting to thrive. All works to be approved by the local authority prior to commencement.

Species	Specification	% of mix	No. of Pill
<i>Pinus domestica</i>	60 - 80 cms bare root	10 %	2 4
<i>Crataegus monogyna</i>	60 - 80 cms bare root	75 %	14 4
<i>Corylus avellana</i>	bare root	10 %	2 4
<i>Ilex aquifolium</i>	2 litre pot pot grown	5 %	1 5

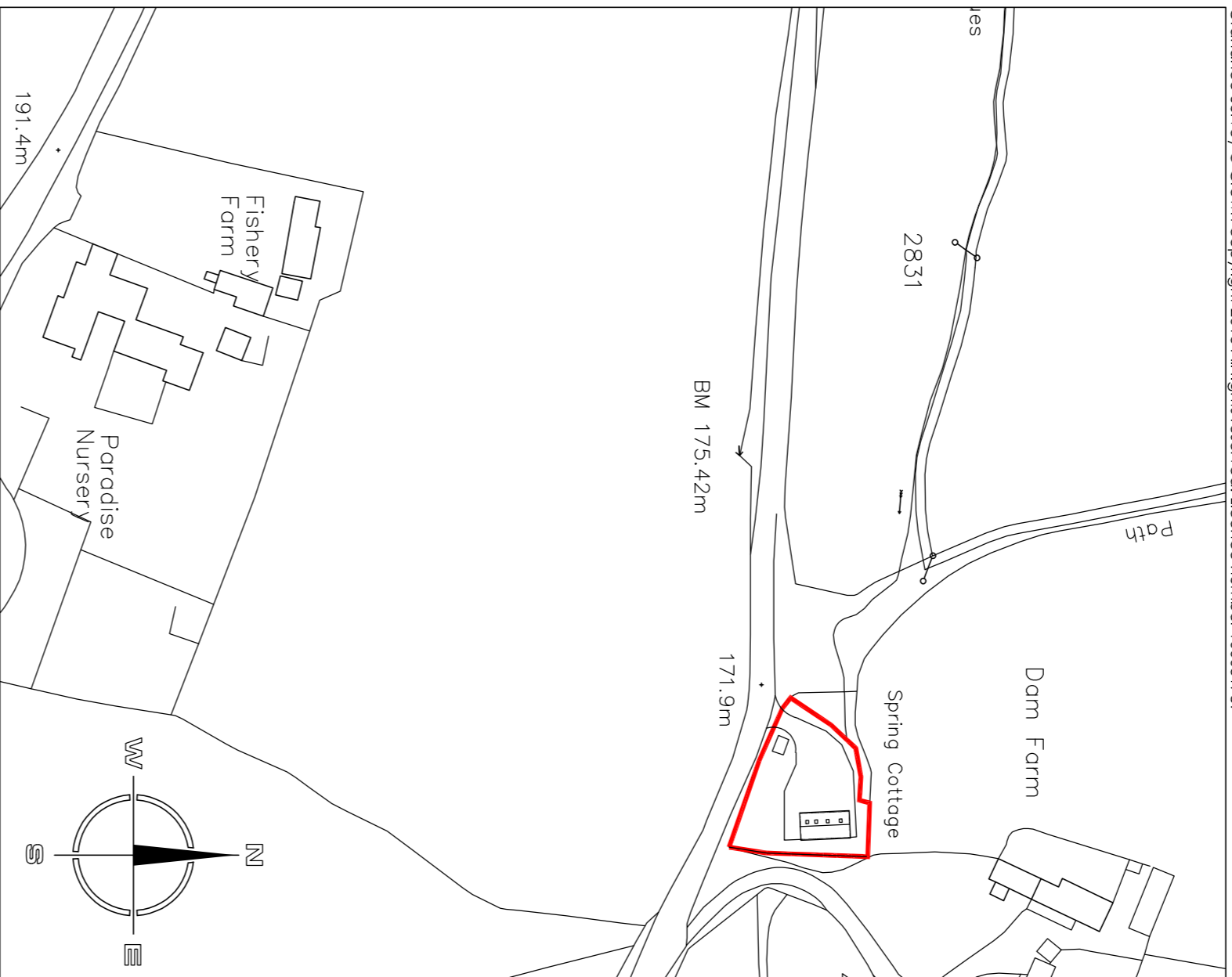
PLANNING KEY				
CODE	TREES	SPEC. SITE	FOR SITE	QUANTITY
TYPE#	Banilo Rendus Compacta	12-14cm	WB8	1
TYPE#	Pinus Akum	12-14cm	WB8	2
TYPE#	Sorbus Aucuparia (Rowan)	12-14cm	WB8	2
	SHRUBS			
CAP	Clivia Alice Pearl	20-30cm	C3	10
EAB	Echinops Asplen Bloom	20-30cm	C3	18
LH	Loveridge Macleae	15-30cm	C3	8

Copyright of this drawing is vested in the Architect and it must not be copied or reproduced without consent. Figured dimensions only are to be taken from this drawing. All components must fit the site and be responsible for taking and checking all dimensions relative to their work. If we, the Architect, find that the drawing is not in accordance with the site, we shall not be responsible for any variations between drawings and site conditions.

**Clients are advised to clarify dimensions with the Architect prior to setting out and not to scale from the drawing.**

New hedge (approximately 1.4 m in total) to be planted at 300 mm centres in a random mix of the following plants, in groups of 3, 5, 7, 9.

# SITE LOCATION PLAN 1:1250



# SITE PLAN 1:100