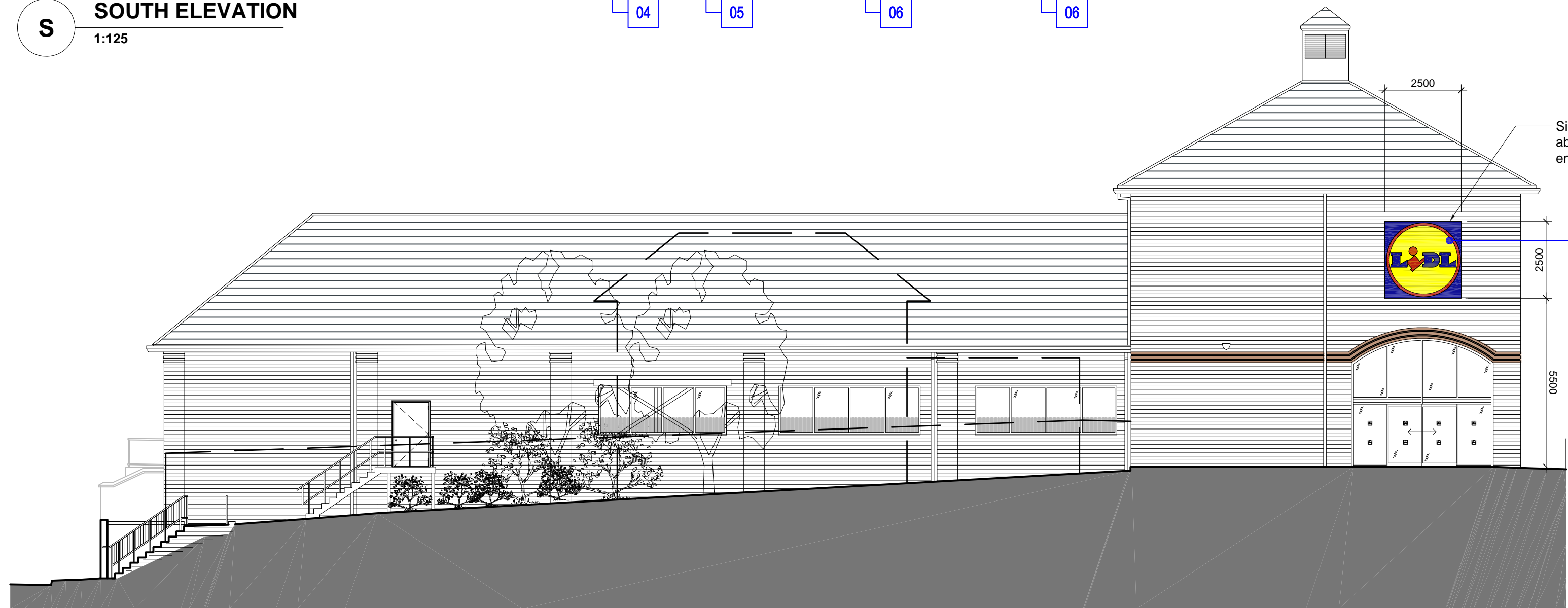


**S** SOUTH ELEVATION  
1:125



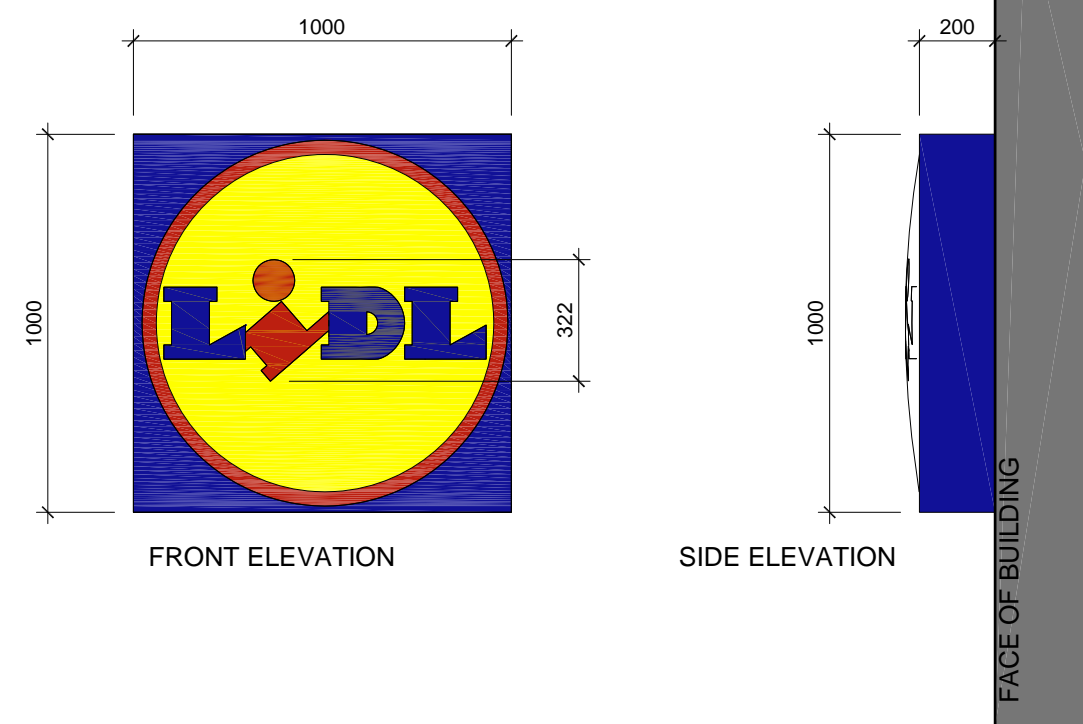
**W** WEST ELEVATION  
1:125



**03** COLUMN MOUNTED BUILDING SIGNAGE ABOVE SHOPFRONT CANOPY  
1:20 @ A1

Overall size 2500mm(h) x 2500mm(w) x 200mm (d).  
Top of panel to be +7992mm AFFL.  
Aluminium single sided lightbox. Facing:  
Face panel - 5mm Opal, acrylic 40% light transmission decorated with Lidl graphic, colours;  
Blue RAL 5010  
Red RAL 3020  
Yellow RAL 1021

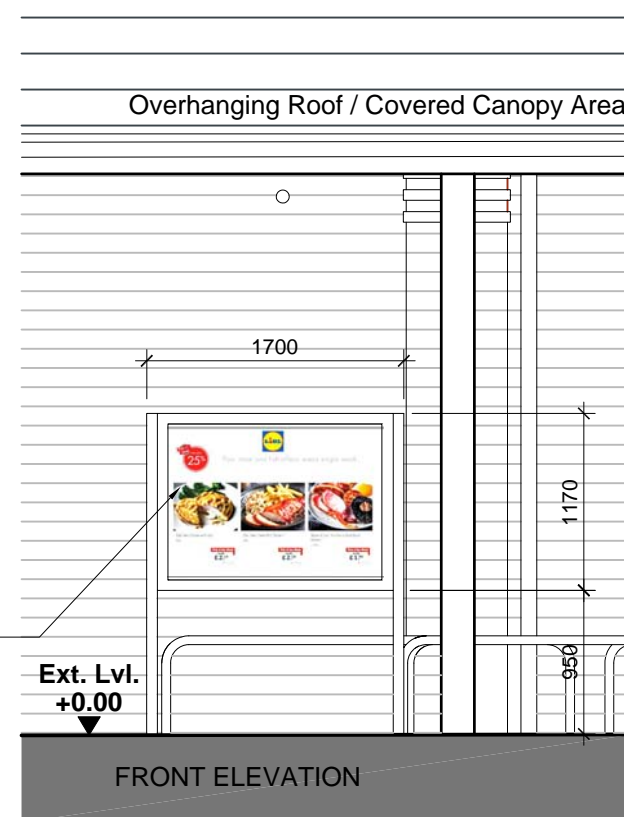
Sign to be internally illuminated. Luminance (candela / M2 = CD/M2) of the illuminated sign for different colours;  
Blue surface - 12 -15 CD/M2  
Blue typeface - 12 - 15 CD/M2  
Yellow surface - 500 CD/M2  
Red surface - 85 CD/M2



**04** SMALL WALL MOUNTED BUILDING SIGNAGE  
1:20 @ A1

Overall size 1000mm(h) x 1000mm(w) x 200mm (d).  
Top of panel to be +2800mm AFFL.  
Aluminium single sided lightbox. Facing:  
Face panel - 5mm Opal, acrylic 40% light transmission decorated with Lidl graphic, colours;  
Blue RAL 5010, Red RAL 3020, Yellow RAL 1021

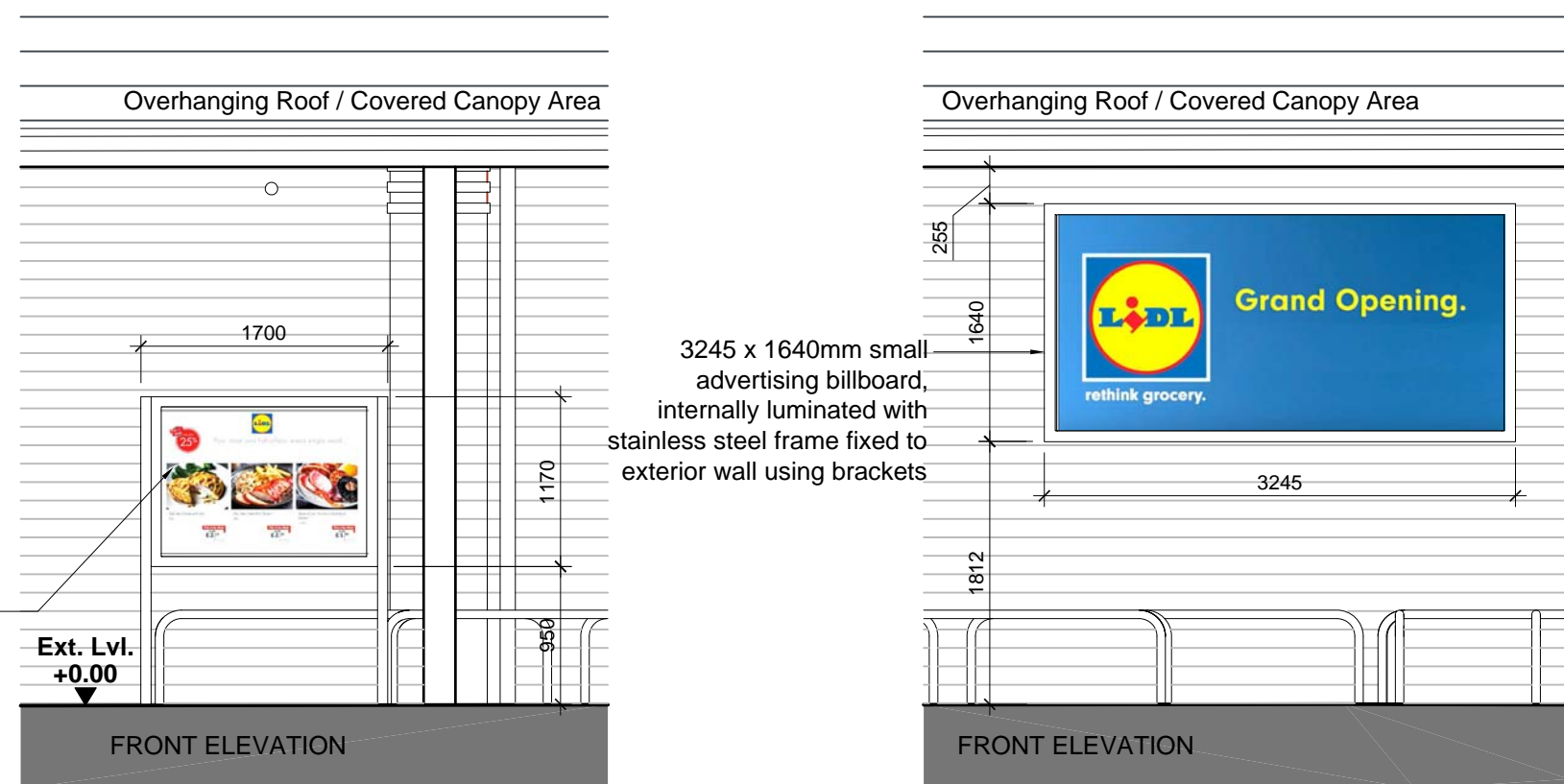
Sign to be internally illuminated. Luminance (candela / M2 = CD/M2) of the illuminated sign for different colours;  
Blue surface - 12 -15 CD/M2  
Blue typeface - 12 - 15 CD/M2  
Yellow surface - 500 CD/M2  
Red surface - 85 CD/M2



**05** FREESTANDING POSTER DISPLAY SIGNAGE  
1:50 @ A1

Overall size 1170mm(h) x 1700mm(w)  
Top of panel to be +2120mm AFFL.  
Free standing poster sign with posts fixed into ground.  
Sign to be internally illuminated.

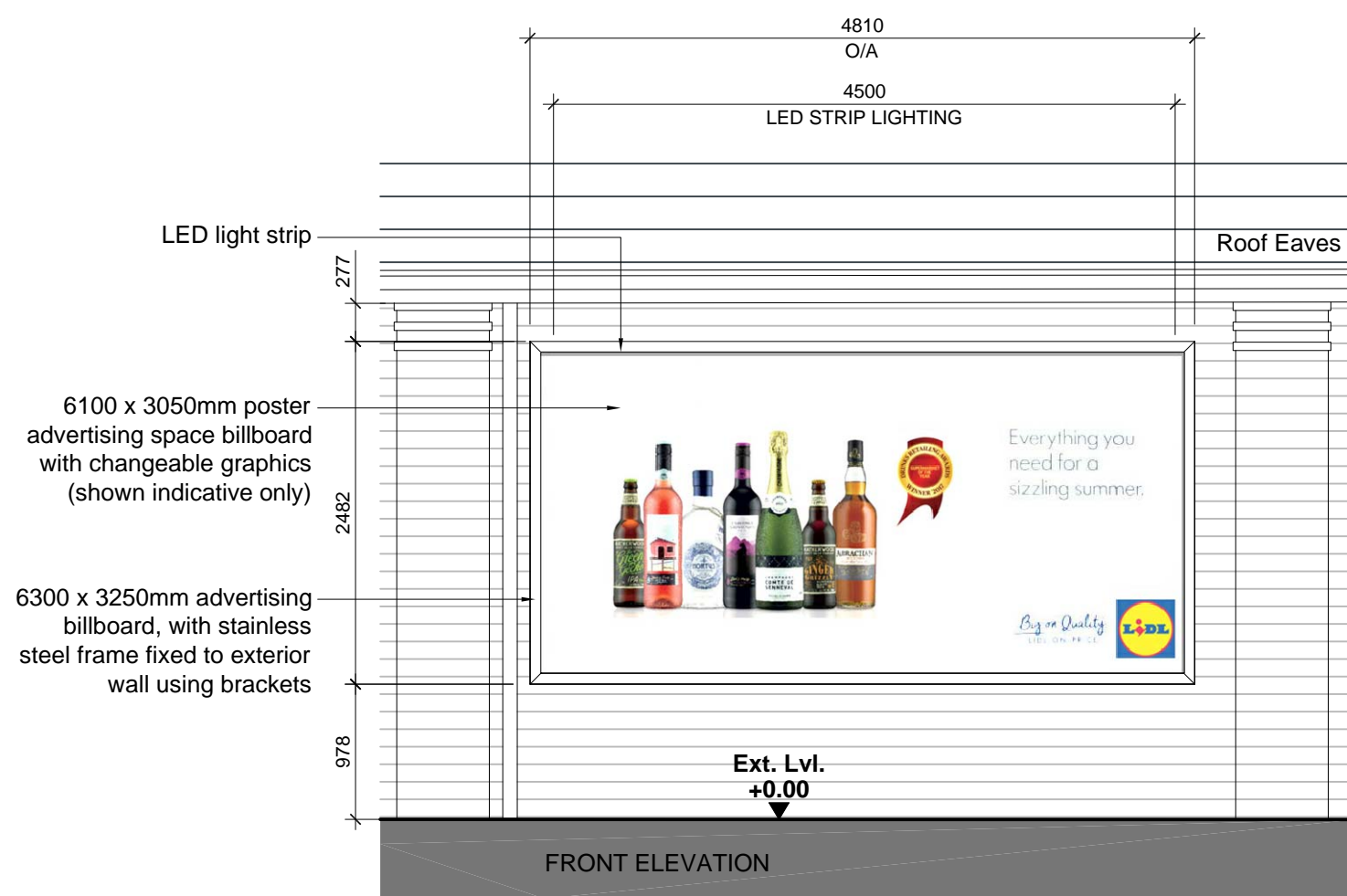
1700 x 1170mm poster advertising poster display with changeable graphics (shown indicative only)



**06** WALL MOUNTED SMALL BILLBOARD  
1:50 @ A1  
2no. Small Billboard Signs

Overall size 1640mm(h) x 3245mm(w) x 70mm  
Top of panel to be +3700mm AFFL.  
Timber advertising board, with stainless steel frame.  
Sign to be externally illuminated.

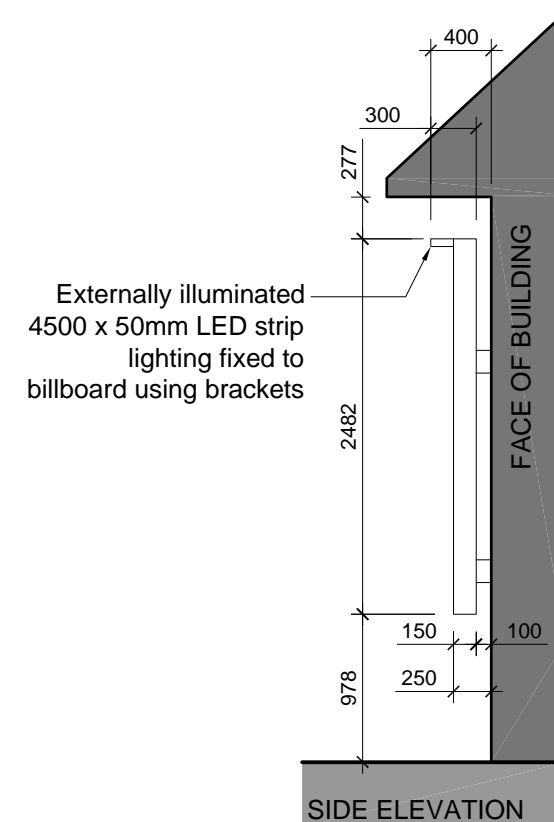
3245 x 1640mm small advertising billboard, internally illuminated with stainless steel frame fixed to exterior wall using brackets



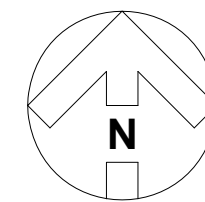
**07** BILLBOARD BUILDING MOUNTED SIGNAGE  
1:50 @ A1  
3no. Large Billboard Signs

Overall size 6300mm(h) x 3250mm(w) x 150mm (d).  
Top of panel to be +3700mm AFFL.  
Timber advertising board, with stainless steel frame.

Sign to be externally illuminated.



Externally illuminated 4500 x 50mm LED strip lighting fixed to billboard using brackets

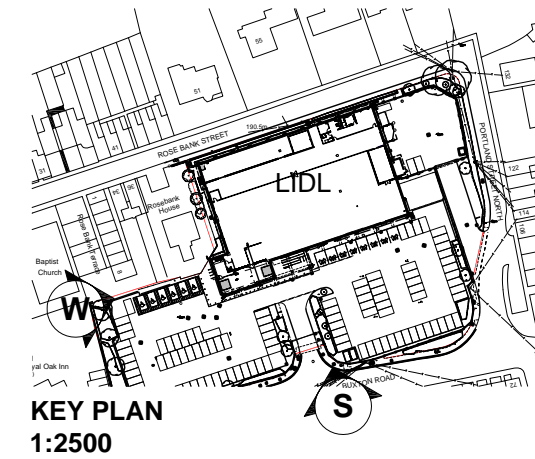


**NOTE:**  
THIS DRAWING IS STRICTLY NOT TO BE USED FOR CONSTRUCTION PURPOSES.  
PROPOSED LEVELS SUBJECT TO DESIGN DEVELOPMENT.  
THIS DRAWING CONSISTS OF THE FOLLOWING THIRD PARTY INFORMATION & DRAWINGS:-  
OneDesign CAD information received via email on 08/05/2017, included;  
Site Context  
Ordnance Survey as per details received from OneDesign.  
Malcolm Hughes, Building Survey, Drawings No: 51320/GF1, 51320/GF2 & 51320/GF3 dated February 2018. HCD received via email on 28/02/2018.  
Malcolm Hughes, Topographical Survey, Drawing No: 51320/Topo 1, 51320/Topo 2 & 51320/Topo 3 dated February 2018. HCD received via email on 28/02/2018.

TO BE READ IN CONJUNCTION WITH HCD DRAWINGS;

A-PL-001 - SITE LOCATION PLAN  
A-71-000 - SIGNAGE LOCATION PLAN  
A-71-001 - PROPOSED BUILDING SIGNAGE DETAILS  
A-71-002 - PROPOSED CAR PARK SIGNAGE DETAILS

**NOTE: ALL SIGNAGE IN ACCORDANCE WITH LIDL STANDARD SPEC 2017**



**KEY PLAN**  
1:2500

REVISION: P01 BY: DJW CHECKED: LARB DATE: 26/02/2018  
Initial issue for adverts consent.

**S4a | FOR PLANNING**

CLIENT



**LiDL UK GmbH**  
**LEEK 17011**

**EXTERNAL BUILDING SIGNAGE DETAILS**

**Hadfield Cawkwell Davidson**

Broomgrove Lodge, 13 Broomgrove Rd, Sheffield, S10 2LZ T 0114 266 8181 www.hcd.co.uk

HCD PROJECT NO.	SCALE				REV.
	1:125 @ A1				P01
PROJECT NO.	ORIGINATOR	VOLUME	LEVEL	TYPE	ROLE + NUMBER
2017-019	HCD	A0	00	DR	A-71-001