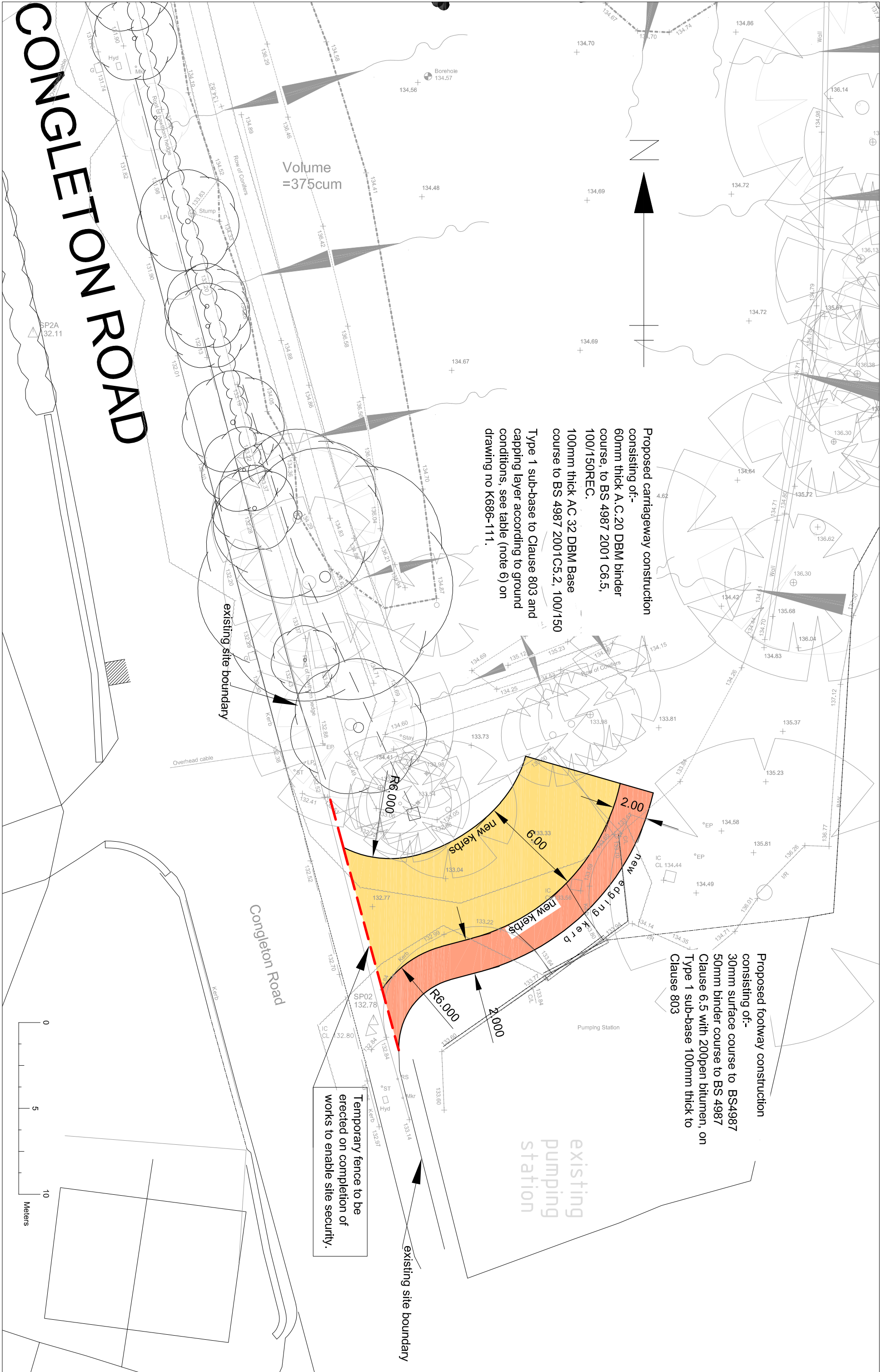


PROPOSED EXTENT OF WORKS
SCALE: 1/200



PROPOSED WORKS DETAILS
SCALE: 1/200

NOTES

1. ALL DIMENSIONS ARE IN MILLIMETRES UNLESS STATED OTHERWISE.
2. THE GENERAL SPECIFICATION OF MATERIALS AND WORKMANSHIP FOR THE CONSTRUCTION OF THE ACCESS ROAD, FOOTPATHS AND OTHER AREAS OF PARASTANDING SHALL BE THE MANUAL OF CONSTRUCTION OF HIGHWAY WORKS (SHW) PUBLISHED BY THE STATIONARY OFFICE, LATEST REVISION NOVEMBER 2009
3. ALL MATERIALS UNLESS SPECIFIED OTHERWISE SHALL COMPLY WITH RELEVANT BRITISH STANDARD. SOURCES OF MATERIALS ARE TO BE AGREED WITH THE ADOPTING AUTHORITY IN ADVANCE OF THE WORKS.
4. THIS DRAWING IS TO BE READ IN CONJUNCTION WITH ALL ASSOCIATED ENGINEERS DRAWINGS AND DETAILS.
5. ANY DISCREPANCIES IN THE DETAILS SHOWN ON THIS DRAWING TO BE REPORTED TO THE ENGINEER PRIOR TO CONSTRUCTION.

ROAD CONSTRUCTION

6. SUB-BASE THICKNESS TO BE AS INDICATED BELOW:-

CBR value of formation	Layer thickness
CBR GREATER THAN 15%	225mm SUB-BASE MINIMUM
CBR GREATER THAN 5% BUT LESS THAN 15%	225mm SUB-BASE Laid IN 2 LAYERS (MAX. SINGLE LAYER THICKNESS 125mm)
CBR GREATER THAN 2% BUT LESS THAN 5%	225mm SUB-BASE PLUS 500mm CARPING
CBR LESS THAN 2%	600mm CARPING

7. ANY SOFT SPOTS AT UNDERSIDE OF CAPPING LAYER TO BE TREATED BY OVERDIGGING AND REPLACEMENT WITH AN APPROVED COMPACTED GRANULAR MATERIAL.
8. THE FORMATION OF ROADS AND FOOTWAYS SHALL BE PREPARED BY REMOVING ALL UNSUITABLE MATERIAL AND AN APPROVED WEEDKILLER SHALL BE SPRAYED ONTO THE SUBGRADE BEFORE LAYING THE SUB-BASE.
9. PRIOR TO CARRYING OUT ANY WORKS ON A PUBLIC HIGHWAY THE CONTRACTOR SHALL OBTAIN A ROAD OPENING PERMIT FROM THE HIGHWAY AUTHORITY.
10. TRAFFIC SAFETY MEASURES ON OR ADJACENT TO AN EXISTING HIGHWAY SHALL BE IN ACCORDANCE WITH CHAPTER 8 OF THE TRAFFIC SIGNS MANUAL.
11. WHERE NEW PAVEMENT MATERIALS ARE TO BE LAID AGAINST BOUND MATERIALS, THE EXISTING SURFACE SHALL BE SAW CUT BITUMEN EMULSION SEALANT.
12. WHERE NEW PAVEMENT MATERIALS ARE TO BE LAID UPON EXISTING PAVEMENT MATERIALS, THE EXISTING SURFACE SHALL BE SUCION SWEEP AND TACK COATED IN ACCORDANCE WITH CLAUSE 920 (SHW).
14. ALL BITUMINOUS MACADAM LAYERS SHALL BE COMPACTED TO ACHIEVE THE AIR Voids REQUIREMENTS SPECIFIED IN THE RELEVANT SECTIONS OF BS 1308 - 1+7.2006.
15. CONCRETE MAKES INDICATED ON THIS DRAWING ARE DESIGNATED UNLESS OTHERWISE NOTED.

Rev	Description	Chk	App	Date
-----	-------------	-----	-----	------

PRELIMINARY

Client/Architect
KEYWORKER HOMES LTD

Contract
**RESIDENTIAL DEVELOPMENT
FORGE WORKS
BIDDULPH**

Title
PROPOSED WORKS TO SITE ACCESS



Date: JAN 18 Scale: 1/200
Original size
Drawn: HEB
Checked: Approved

Drawing No.
K686-114

Revisi