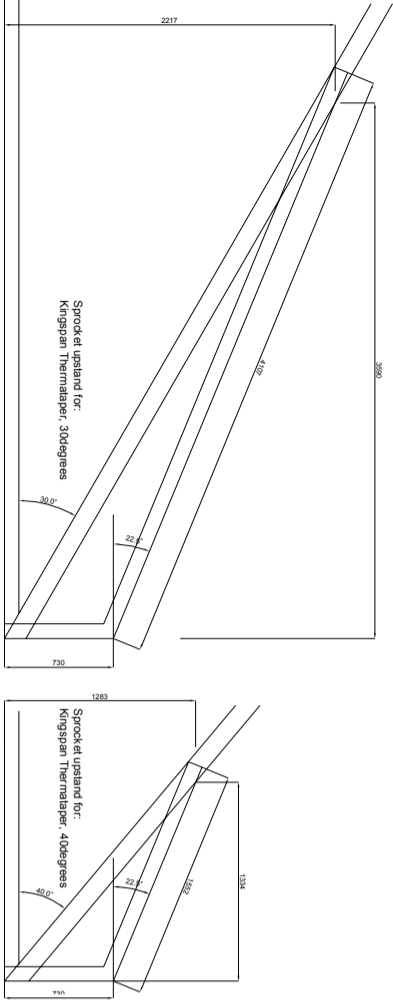
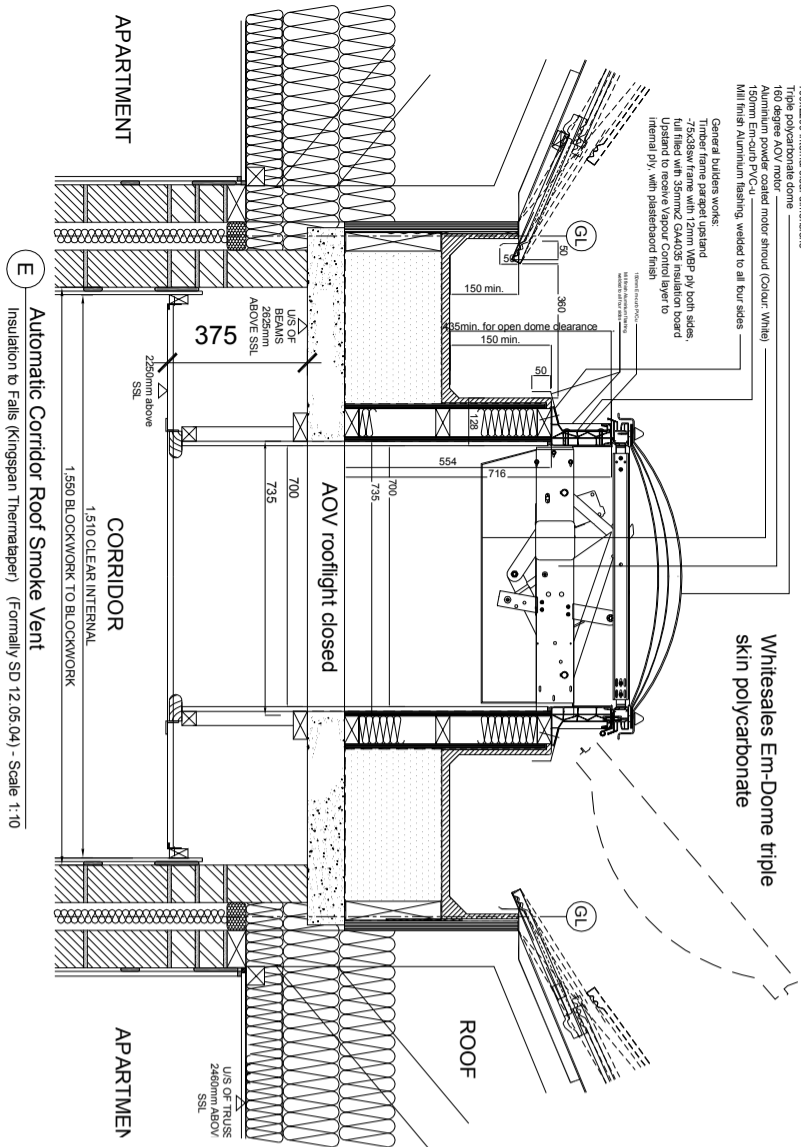


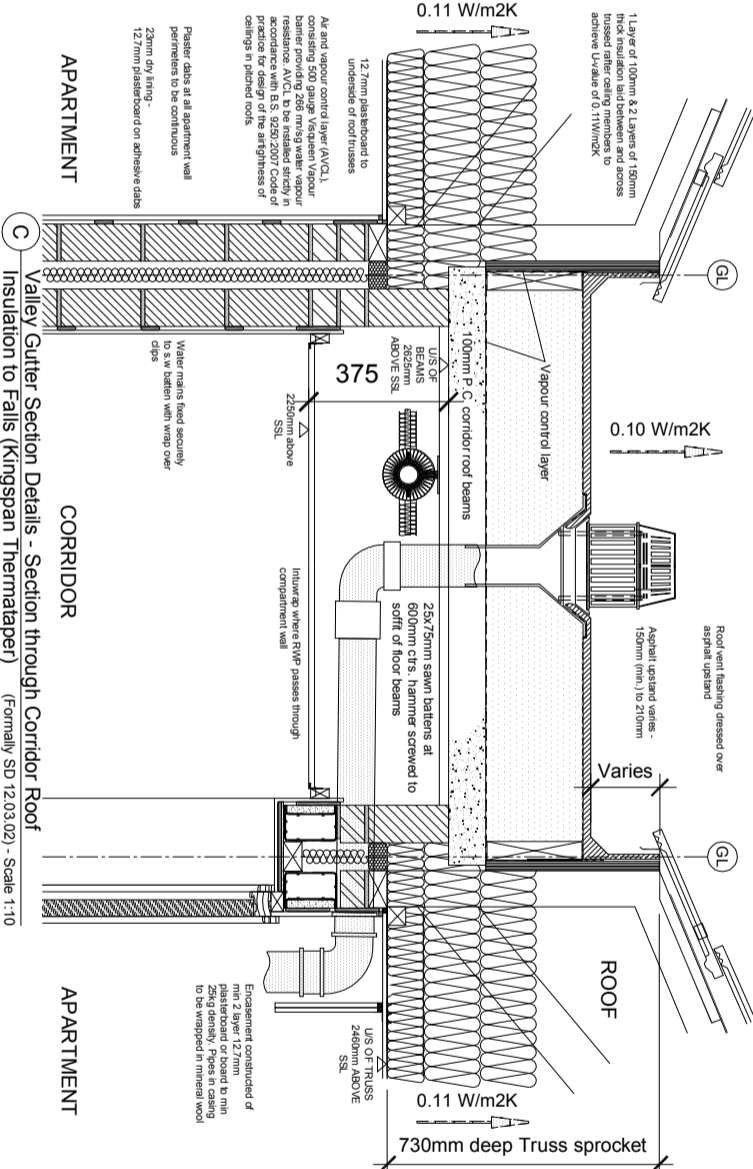
- NOTES:
1. This drawing is to be read in conjunction with the project specification
 2. Refer to SSI - Roofs - Valley Gutter Section Details for valley construction details.



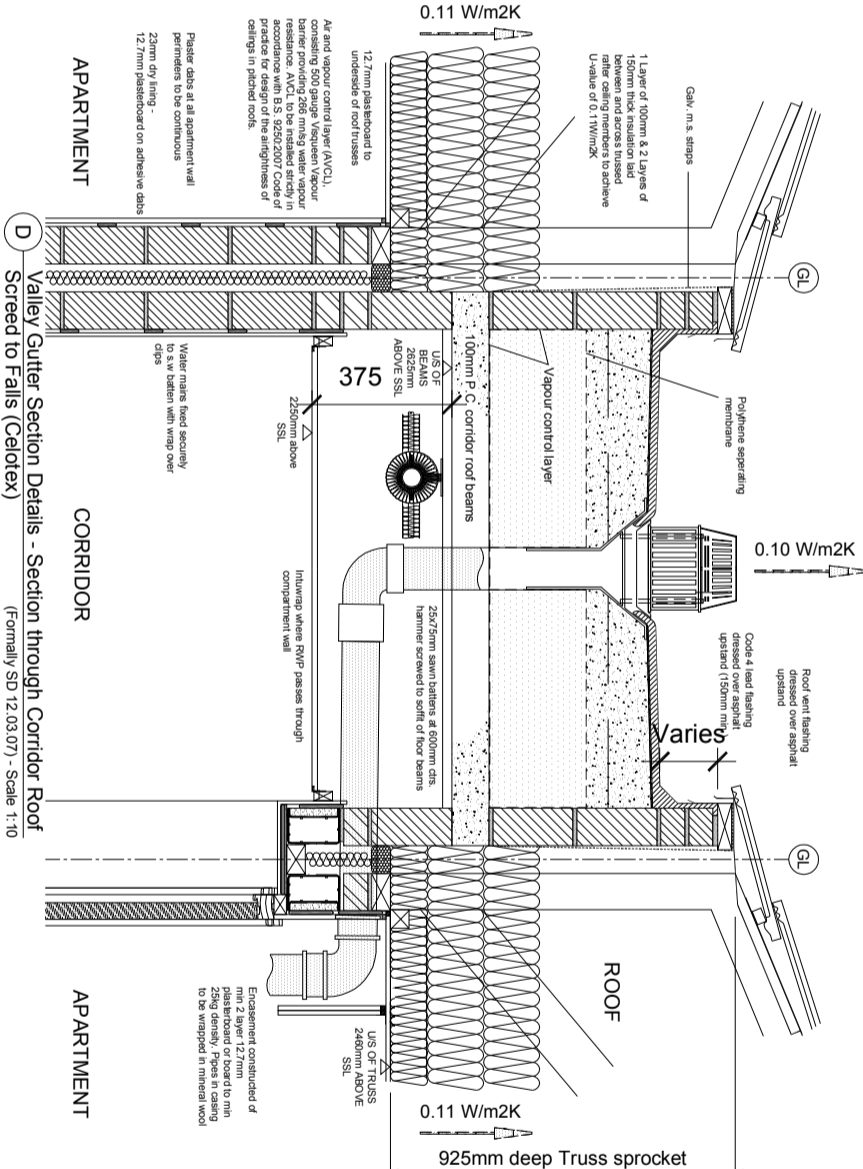
A Valley Gutter Section Details - Section through 30° and 40° Sprocket Upstand
(Formally SD 12.03.07) - Scale 1:25



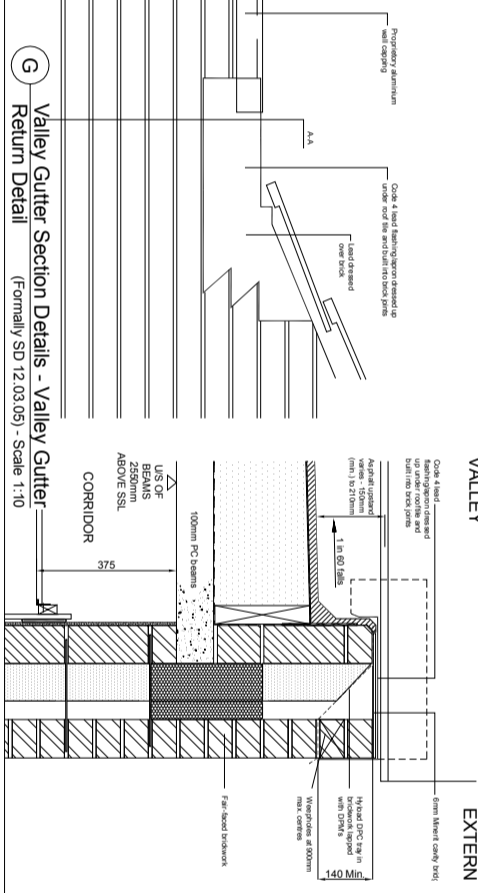
E Automatic Corridor Roof Smoke Vent
Insulation to Falls (Kingspan Themataper) (Formally SD 12.06.04) - Scale 1:10



C Valley Gutter Section Details - Section through Corridor Roof
Insulation to Falls (Kingspan Themataper) (Formally SD 12.03.02) - Scale 1:10



D Valley Gutter Section Details - Section through Corridor Roof
Screed to Falls (Celotex) (Formally SD 12.03.07) - Scale 1:10



G Valley Gutter Section Details - Valley Gutter
Return Detail (Formally SD 12.03.05) - Scale 1:10

Solar reflective paint finish on 20mm 2-coat asphalt skirting with angle flash formed at perimeter. Asphalt and on reinforced blunten Themataper T47LPCFM boards manufactured to a total of 160 (17) max. 1% setting-out of insulation boards.

Insulation laid on blunten roofing membrane with all joints lapped and sealed with full bonded to 100mm thick. The vapour control layer is to be turned up the full thickness of insulation boards at all perimeter and upstands.

Perimeter upstands to be formed with 25mm ext metal lathing on separating membrane to receive 13mm asphalt skirting.

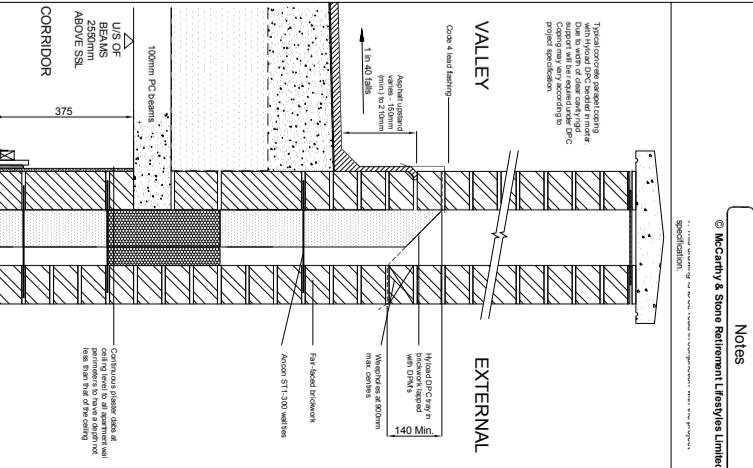
The insulation boards are to be set back 50mm from perimeter ply upstands and the gap filled with blunten impregnated feedback to support the asphalt angle flash.

Fullboard or similar approved rainwater outlet fitted with a straining ring and down pipe to be installed in accordance with the manufacturer's recommendations.

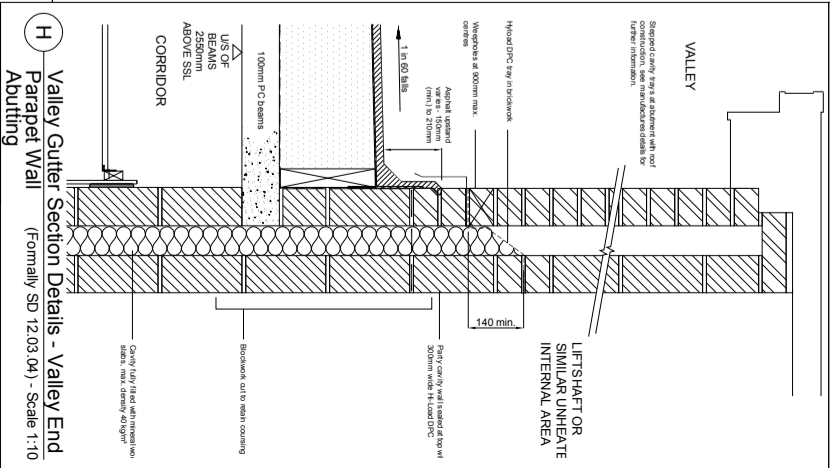
Fire Stop Collars type Quatex QCM110 to be installed in accordance with the following:

1. Recommendations of Kingspan Ltd.
2. Recommendations of the British Asphalt 3 BS EN 1307:2004

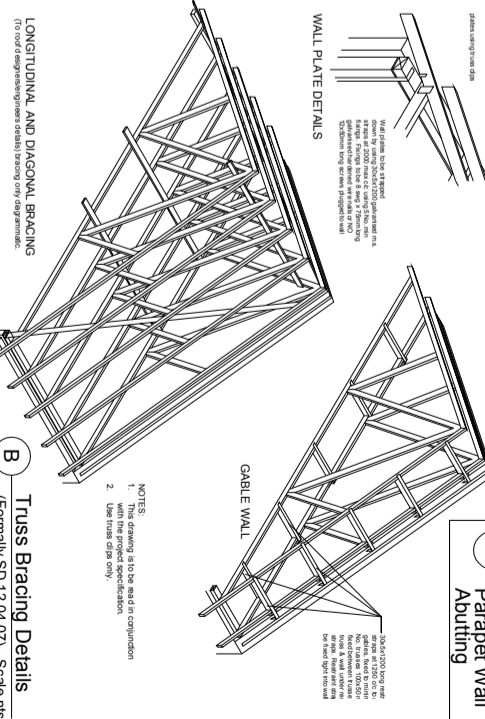
This drawing is to be read in conjunction with the project specification.



F Valley Gutter Section Details - Valley End
High Level Parapet Wall Detail (Formally SD 12.03.03) - Scale 1:10



H Valley Gutter Section Details - Valley End
Parapet Wall Abutting (Formally SD 12.03.04) - Scale 1:10



B Truss Bracing Details
(Formally SD 12.04.07) - Scale 1:10

NOTES:	
1.	Use this detail only in conjunction with the project specification.
2.	Use this detail only.

CONSTRUCTION DETAIL	
Valley Gutter Details	
SD 12.03.02	E