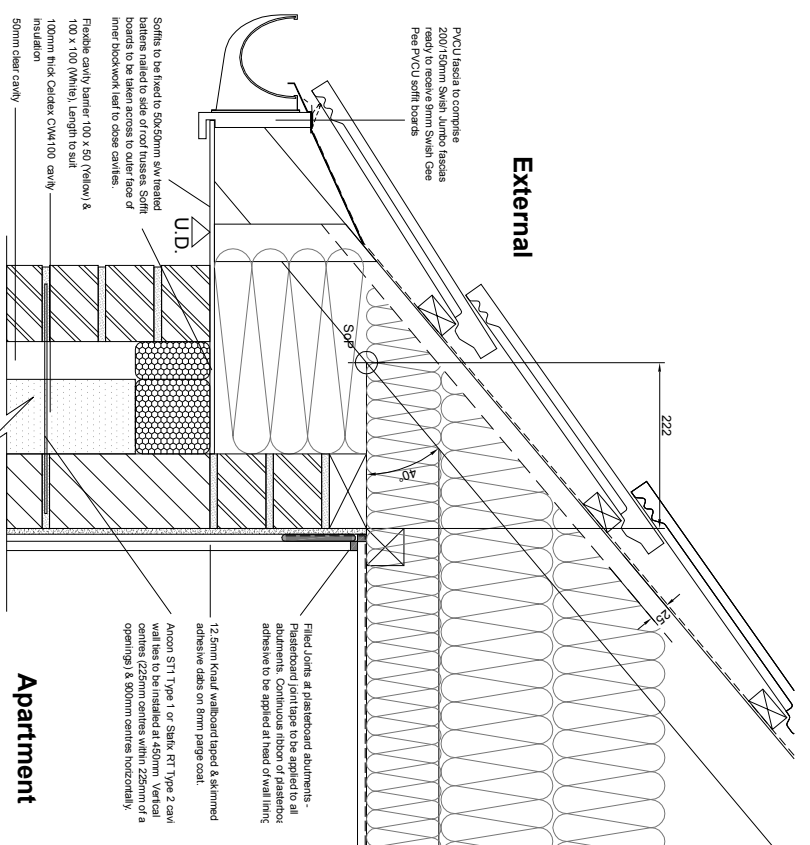
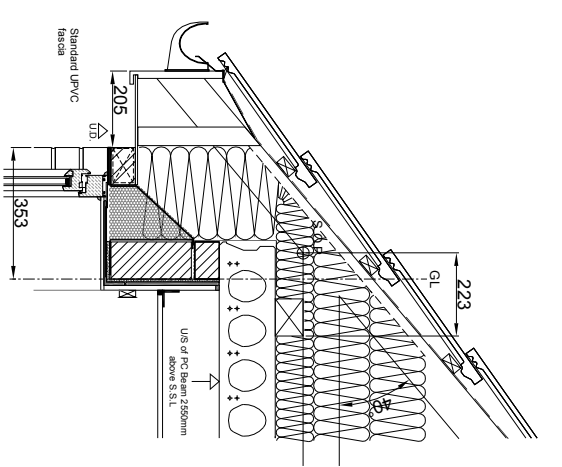


- NOTES:
1. This drawing is to be read in conjunction with the project specification.
 2. Trusses to be at 600mm max. centres supported on and secured to 100x75mm s.w. wall plates. Wall plates to be fixed to 150mm or greater concrete beams using concrete lock bolts.
 3. Trusses to be secured to 100x75mm s.w. wall plates using concrete lock bolts.
 4. The setting out point (SCP) is 27mm from eave face of first floor blockwork.

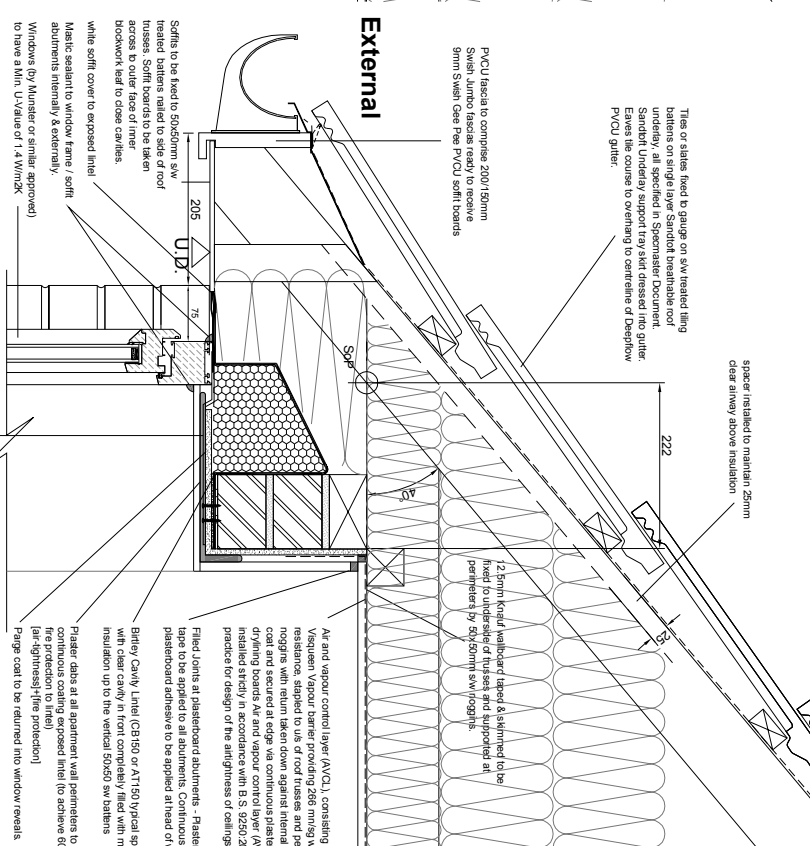
E 40° Pitch

F Detail over Window



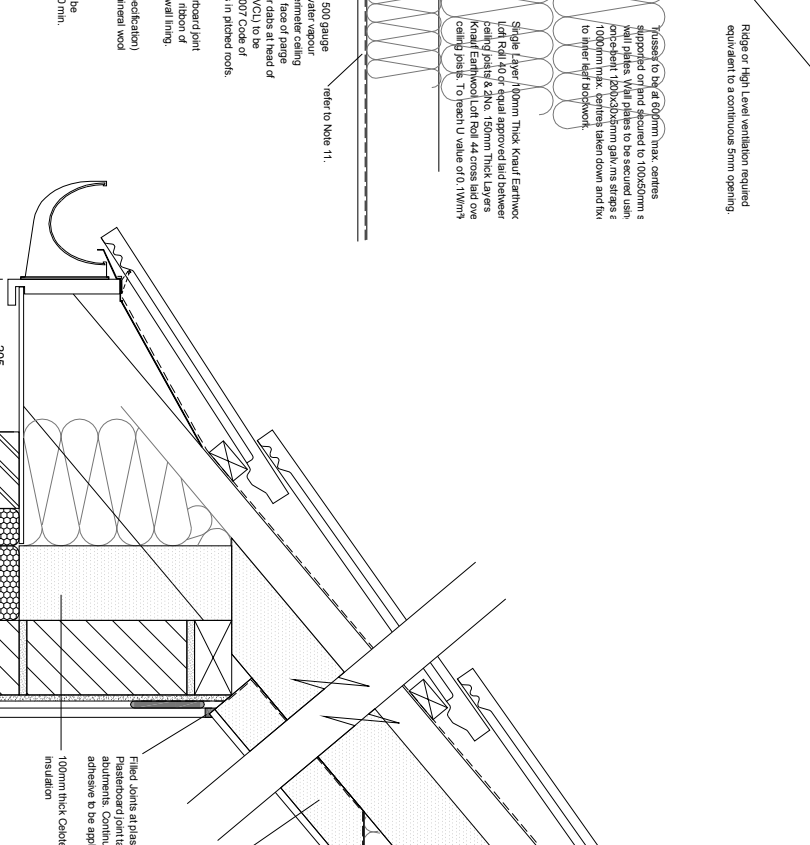
B Typical Eaves

(Formally SD 18.12.01) - Scale 1:5



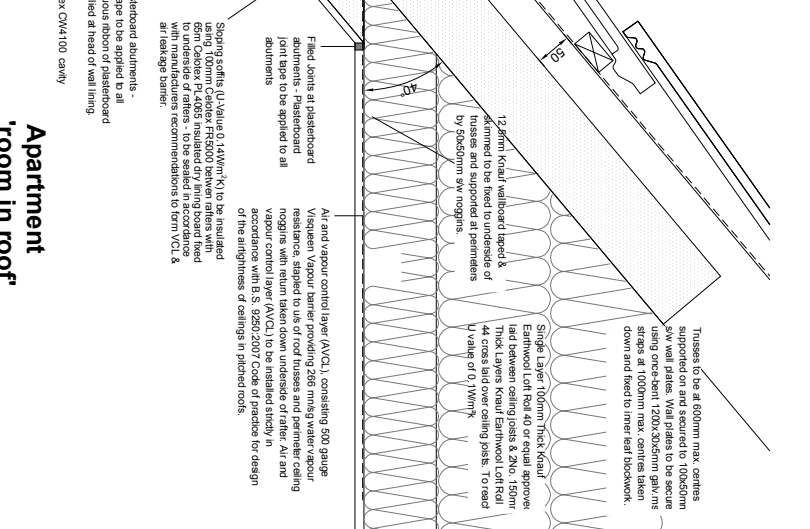
C Typical Eaves - Window Detail

(Formally SD 18.12.02) - Scale 1:5



Apartment

(Formally SD 18.12.03) - Scale 1:5



D Typical Eaves - Sloping Soffit

(Formally SD 18.12.03) - Scale 1:5

- NOTES
1. This drawing is to be read in conjunction with the project specification.
 2. Trusses to be at 600mm max. centres supported on and secured to 100x50mm s.w. wall plates. Wall plates to be secured using once-bolt 1200x50x5mm galv./ms at 600mm max. centres taken down and fixed to mink bed blockwork.
 3. Tiles or slates fixed to gauge on s.w. treated string battens on single layer breathable roof underlay, all specified in Specification Document. Standard timbering overlying to certificate of Dimpleflow PVCU gutter.
 4. Ridge or High Level ventilation required equivalent to continuous 50mm opening. Refer to specification section 227 for roof insulation details.
 5. 125mm plasterboard to be fixed to underside of truss and supported at perimeters by 50x50mm s.w. noggin.
 6. PVCU fascia to comprise 200T150x25mm s.w. larchi strapping to form a drip and grooved to receive 6mm stipulata or similar approved soffit.
 7. Timber fascia to comprise 200T150x25mm s.w. larchi strapping to form a drip and grooved to receive 6mm stipulata or similar approved soffit.
 8. Soffits to be fixed to 50x50mm s.w. treated battens nailed to side of roof trusses. Soffit boards to be taken across to outer face of inner blockwork leaf to close cavities.
 9. Air and vapour control layer (AVCL) to be installed strictly in accordance with B.S. 9250:2007 Code of practice for design of the airtightness of ceilings in p.l.c. roofs.
 10. Plasterboard ceiling options:
 - Truss chords @600mm c/s & 1x additional noggin t provide board edge support.
 - Truss chords @450mm c/s, no additional noggin
 - Counter battens @350mm @450mm c/s on truss chords, no additional noggin required.
 - 11mm wall board, no additional noggin required.