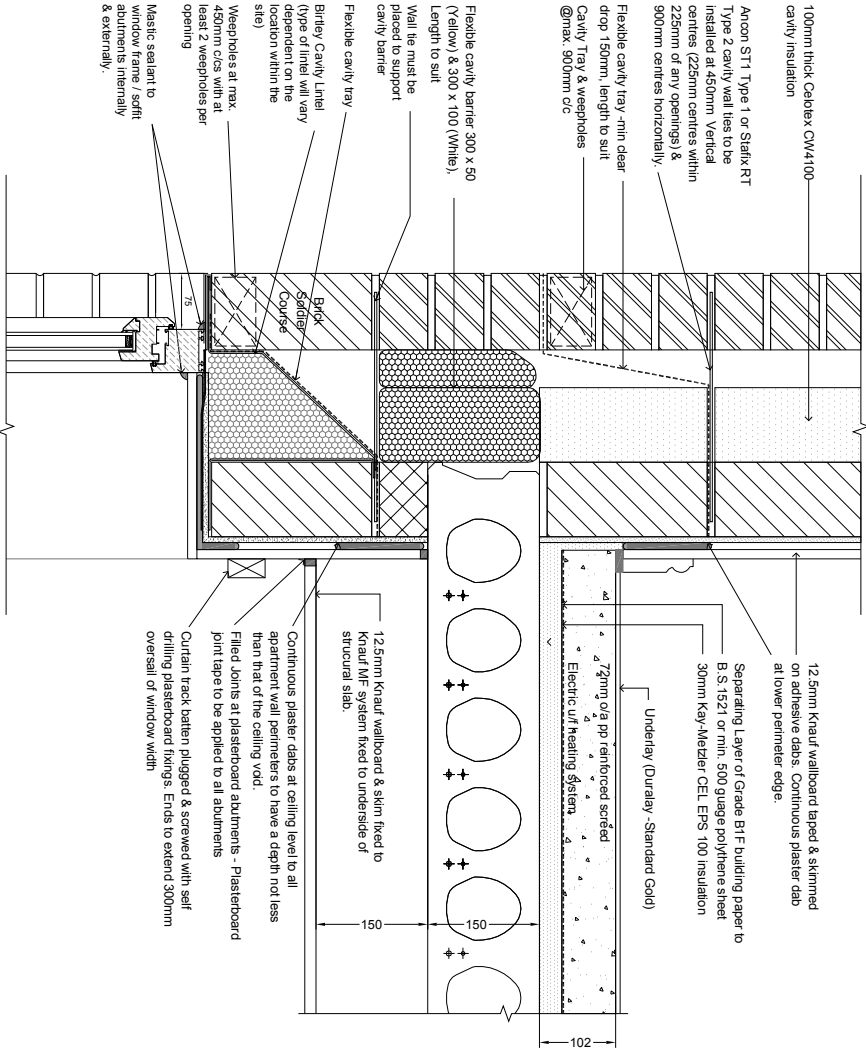
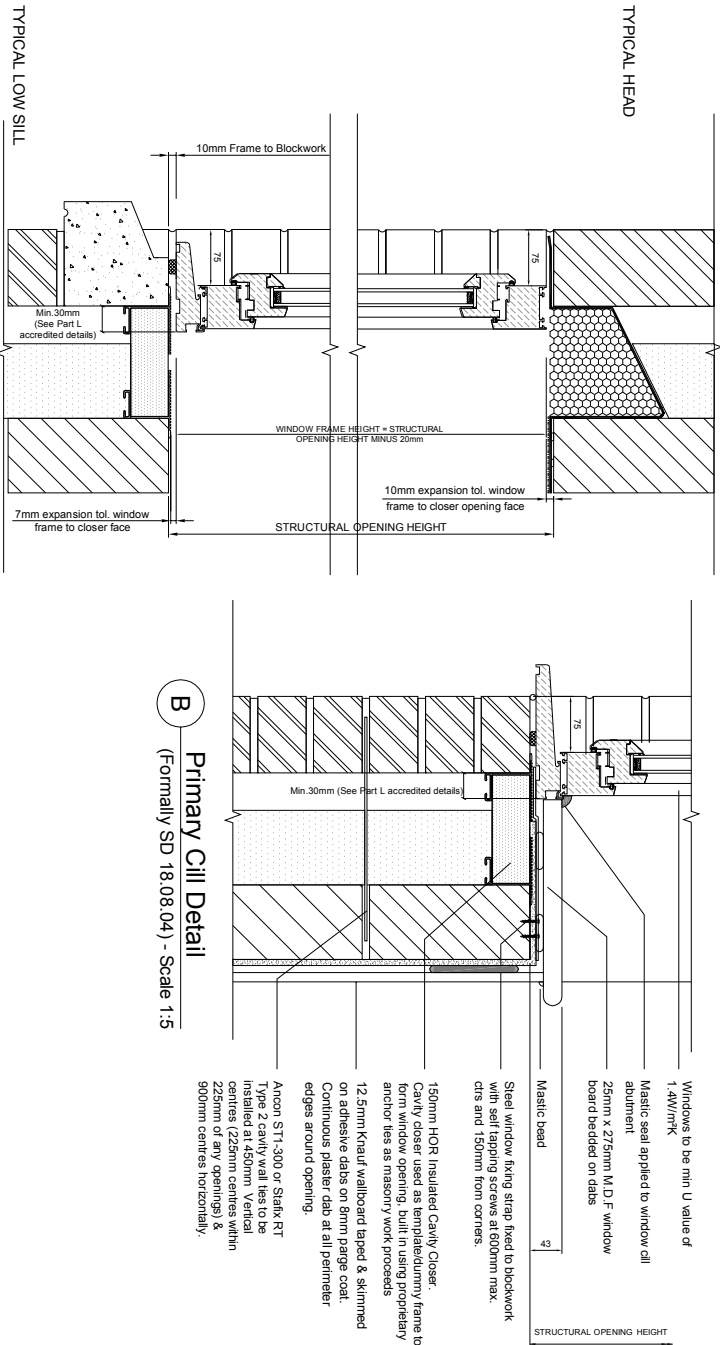


- NOTES:
1. This drawing is to be read in conjunction with the project specification.
 2. 3 Course concrete inlets shown, but detail will depend on detail above window head and / or landing and span of opening.
 3. Gaps due to camber to be filled with 'dry pack' mortar before construction above it slab proceeds.

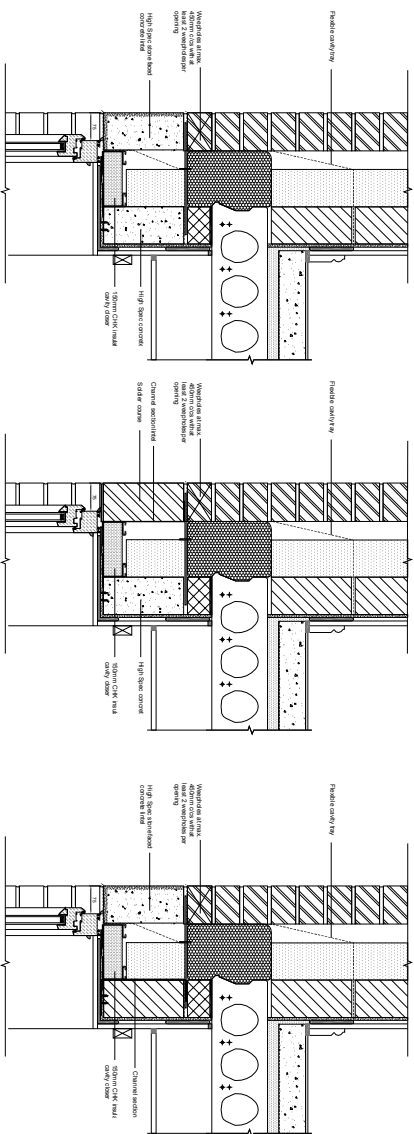


C Primary Head Detail
(Formally SD 18.08.05) - Scale 1:5



D Primary Head/Sill Detail
(Formally SD 08.01.07) - Scale 1:5

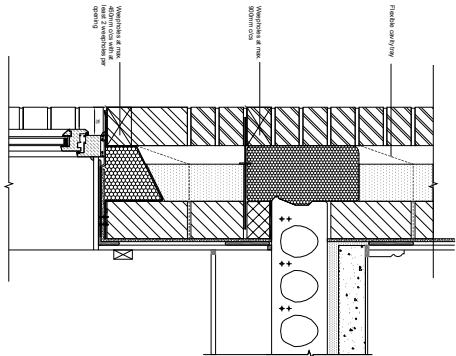
B Primary Cill Detail
(Formally SD 18.08.04) - Scale 1:5



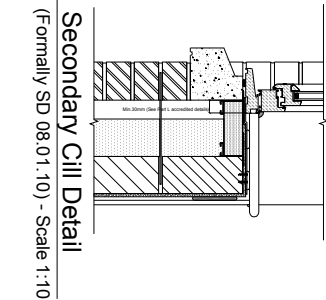
E Secondary Head Detail
(Formally SD 08.01.14) - Scale 1:10

F Secondary Head Detail
(Formally SD 08.01.15) - Scale 1:10

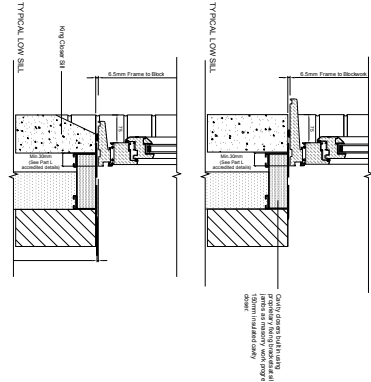
G Secondary Head Detail
(Formally SD 08.01.16) - Scale 1:10



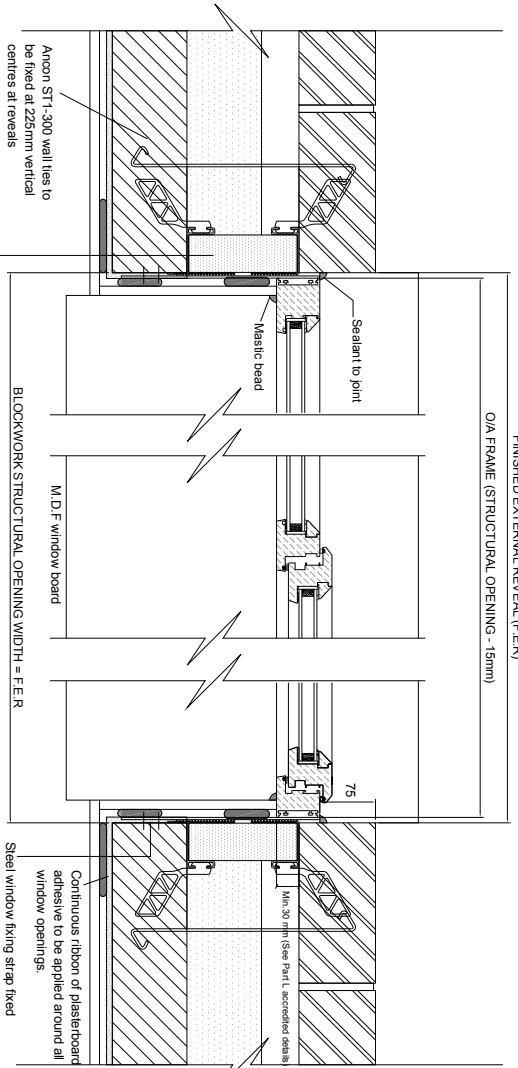
H Secondary Head Detail
Scale 1:10



J Secondary Cill Detail
(Formally SD 08.01.10) - Scale 1:10



K Secondary Cill Detail
(Formally SD 08.01.08) - Scale 1:10



A Primary Plan Detail
(Formally SD 18.08.06) - Scale 1:5

150mm CHK Insulated Cavity Closer and Anchor ties. Use recommended proprietary Anchor ties every 225mm up along the closer, (every third course of brickwork and every course of standard size blockwork). Always fix one tie into each leaf of the wall. Clear excess mortar from the face of the wall. Note: Anchor ties must not be used as a replacement for wall ties.

Internal

External

Rev	Description	By	Date
1	Issued	SD	18.08.06

1	Issued	SD	18.08.06
---	--------	----	----------

1	Issued	SD	18.08.06
---	--------	----	----------

1	Issued	SD	18.08.06
---	--------	----	----------

1	Issued	SD	18.08.06
---	--------	----	----------

1	Issued	SD	18.08.06
---	--------	----	----------