

NOTES

- 20mm THICK AC 6
DENSE SURF 160/220 TO
TABLE B15 OF PD 6691:2007
MIN PSV =50

40mm DBM SURFACE COURSE
TO BS594 1992 PART 1 TABLE 3
COL 3/3, 55/10, C SURF, 100/150
DES PSU 65

DES PSU 65

60mm AC20 DBM BINDER COURSE
TO BS4987 2001

50mm THICK BINDER COURSE /
DENSE BIN 160/220 RECIPE MIX
TO TABLE B.11 OF PD6691:2007

100mm TYPE 1 SUB-BASE TO
SHW CLAUSE 803.

EDGING TYPE EF

TYPE 1 SUB-BASE —
TO CLAUSE 803 (SHW)
(SEE NOTE 6)

100mm AC 32 DBM BASE COURSE
TO BS4987 2001 _____
C5.2, 100/150 REC

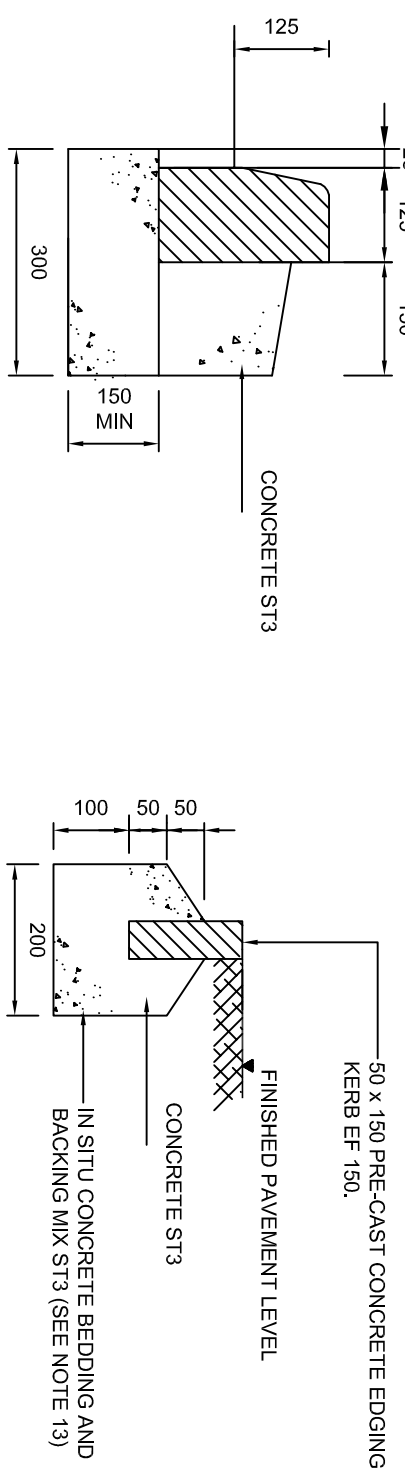
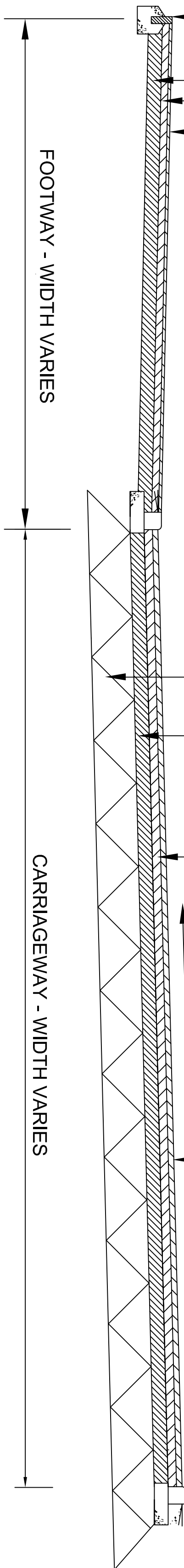
1 IN 40

FOOTWAY - WIDTH VARIES

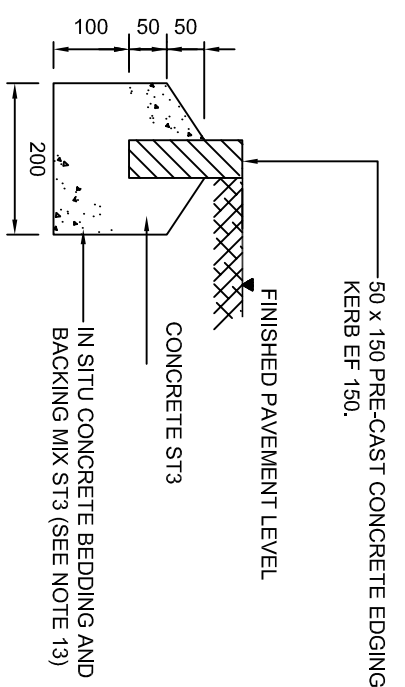
CARRIAGEWAY - WIDTH VARIES

TYPICAL TARMACADAM CARRIAGEWAY/FOOTWAY CROSS-SECTION

scale: 1/25

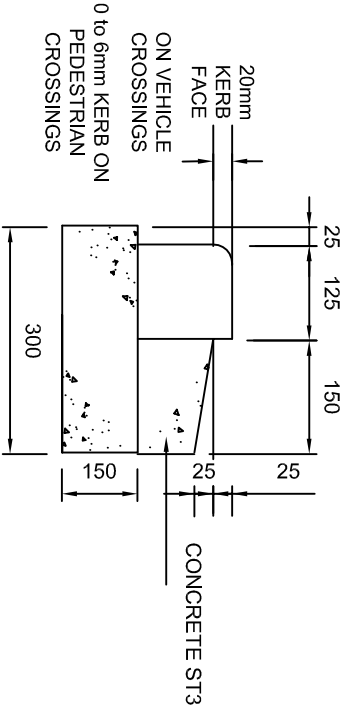


HALF BATTERED KERB: TYPE HB2



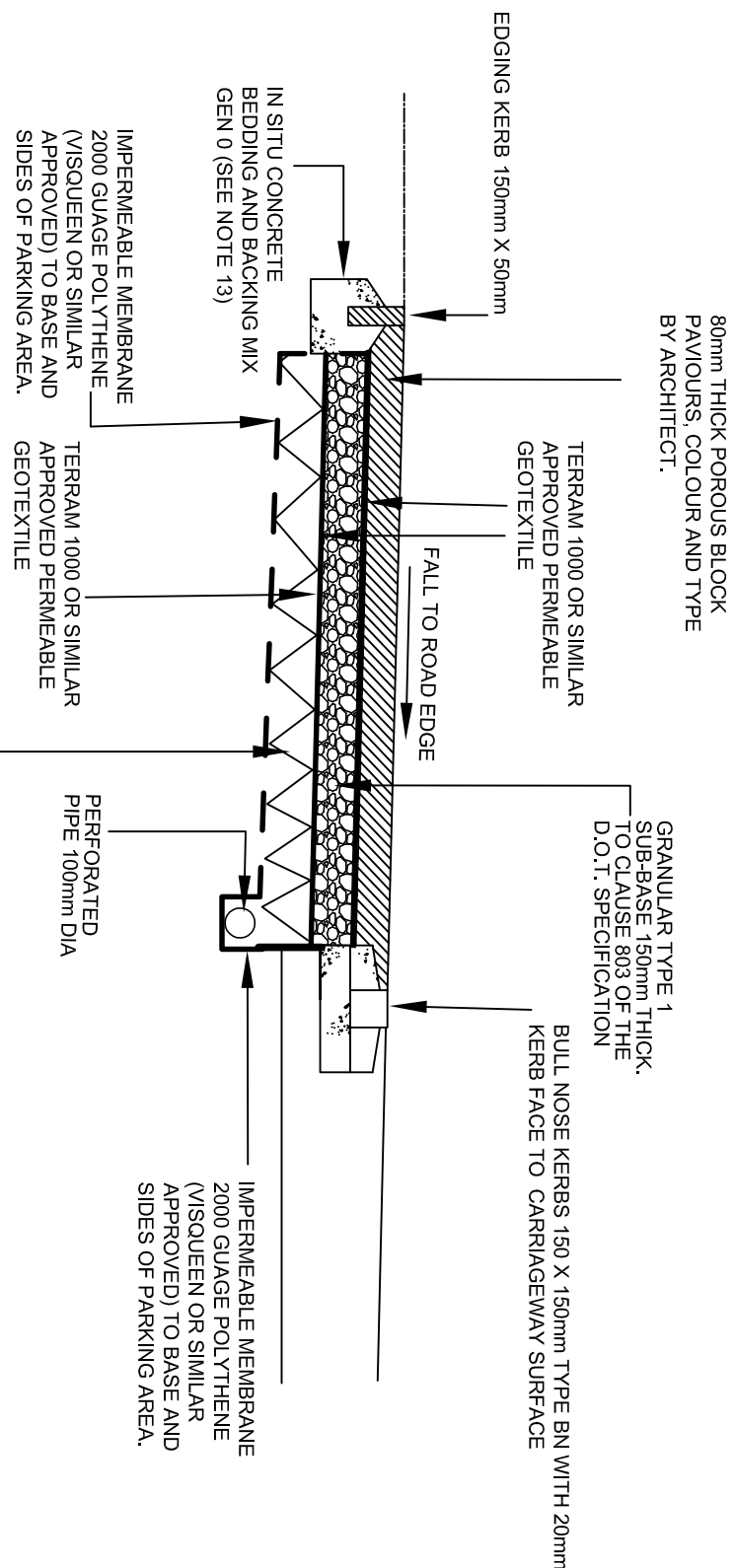
EDGING TYPE 1

NOTE
ALL CONCRETE FOUNDATIONS
AND BACKING TO KERBS ARE TO
BE MECHANICALLY VIBRATED.



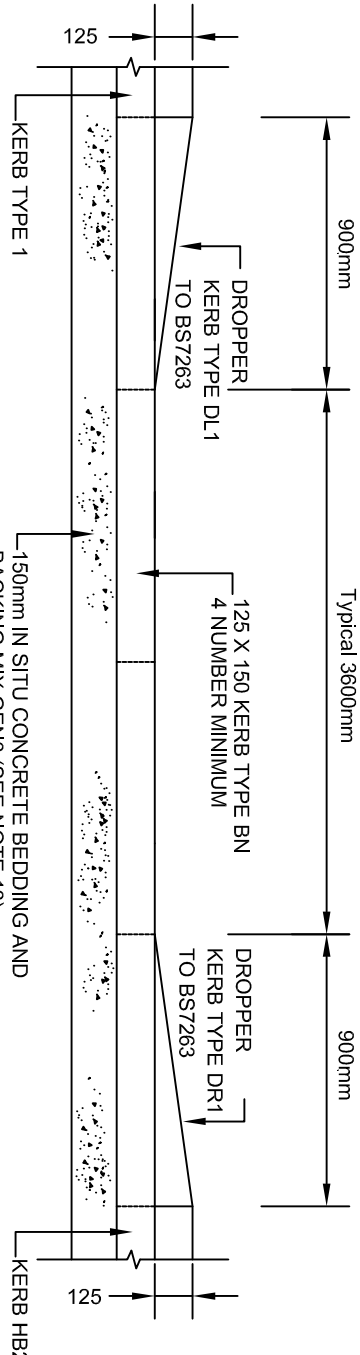
BULLNOSE KERB: TYPE BN

SCALE: 1/10

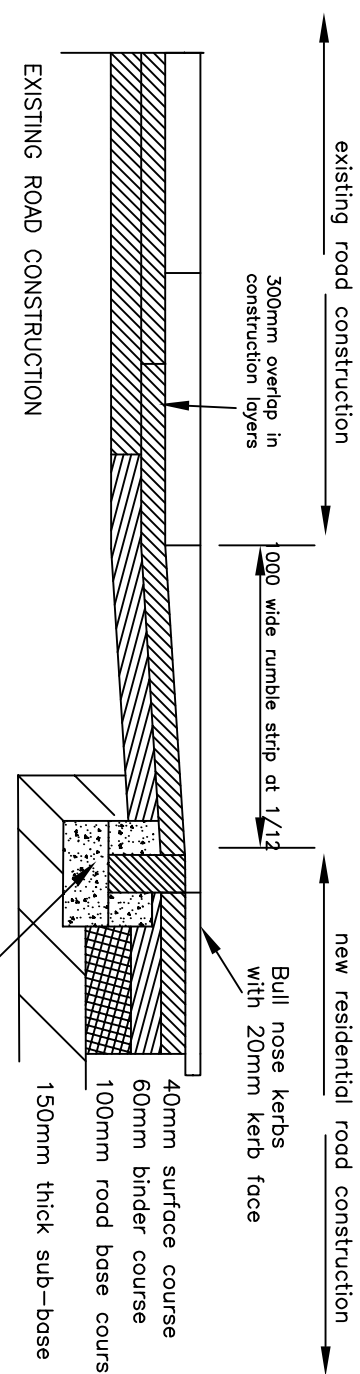


TYPICAL SECTION PERMEABLE DRIVEWAYS

SCALE: 1/50



DROPPED VEHICULAR ACCESS



The top of the kerb line is to remain constant at all times.

TRANSITION RAMP DETAIL

SCALE: 1/25

CRR value of formation	Capping (mm)	Sub-base (mm)
CRR LESS THAN 2%	600mm	150mm
2% TO 5%	350mm	150mm
5-15%	—	225mm max single layer 125mm
MORE THAN 15%	—	150mm

SUB-BASE THICKNESS TO BE AS INDICATED BELOW:

1. ALL DIMENSIONS ARE IN MILLIMETRES UNLESS STATED OTHERWISE.
2. THE GENERAL SPECIFICATION OF MATERIALS AND WORKMANSHIP FOR THE CONSTRUCTION OF THE ACCESS ROAD, PROPPING AND OTHER AREAS OF HARVESTING SHALL BE THE MANUAL OF CONTRACT DOCUMENTS FOR HIGHWAY WORKS, VOLUME 1, SPECIFICATION OF HIGHWAY WORKS (SHAW) PUBLISHED BY THE STRAIGHT ROAD, WESTERN REGION NOVEMBER 2009
3. ALL MATERIALS UNLESS SPECIFIED OTHERWISE, SHALL COMPLY WITH RELEVANT BRITISH STANDARD. SOURCES OF MATERIALS ARE TO BE AGREED WITH THE ADOPTING AUTHORITY IN ADVANCE OF THE WORKS.
4. THIS DRAWING IS TO BE READ IN CONJUNCTION WITH ALL ASSOCIATED ENGINEERS DRAWINGS AND DETAILS.
5. ANY DISCREPANCIES IN THE DETAILS SHOWN ON THIS DRAWING TO BE REPORTED TO THE ENGINEER PRIOR TO CONSTRUCTION.

Rev	Description	chk'd/app'd	Date
A	SCALE BAR AMENDED		27/05

Issue
PRELIMINARY

Client/Architect
MR INDERJIT GARCHA

Contract
THE HOMESTEAD
BIDDULPH

ROAD CONSTRUCTION DETAILS



46 SANDBACH ROAD, CONGLETON, CHESHIRE CW12 4LW
Phone/Fax: 01260 275760, e-mail: garybennett172@btinternet.com

Mortar joints pointed and struck
(mortar to be 2:1 granite dust:cement)

Date	JUN 17	Scale	AS SHOWN
Original size A1			
Drawn	GS		
Checked		Approved	

SCALE: 1/25

Drawing No.	Revision
K668-105	A