

Wayleave / Permissions Pack Natwest & RBS

Site: Frome, BA11 1AE

Overview of Request

This document covers a break down of the BT Delivery of cabling and hardware into a Natwest/RBS Branches that have listed buildings / permissions requirements applying to them.

Summary of Work

BT Engineering Teams and RBS 3rd Party Suppliers will be attending site within the branches and installing new fibre and copper cabling to provide connections to new BT Circuits and Cisco Wireless Access Points (WiFi).

Where possible BT & RBS 3rd Party Suppliers will utilise existing cable management containment within the branch sites to install the new cabling. Diagrams/Plans of planned cable runs for the relevant site are contained within this document along with relevant, supporting photo's.

New Cisco Wireless Access Points will be installed within the branch as part of this delivery; these devices provide access to wireless internet access within the site. This document provides diagrams of the new Access Points (referenced as "AP's") locations within the branches and photo's of the proposed installation position

The cable routes described herein with reference to the Wi-Fi access points are assumed and are based on non-intrusive visual inspection of the environment (e.g. no lifting of ceiling \ floor tiles took place in ascertaining the positioning of the access points and the associated cable routes). RBS branches have a managed cable system installed above the ceilings and as such cable routes will predominately be contained within the cable management system.

Fibre Summary

- Provide approx. 29m of 2bft Pvc to external wall located at rear ally way entrance to bank. Drill hole thru external wall, into ground floor lobby for cable route , Please ref Pic 2 for Ref.
- There is a requirement to install a gas seal unit as indicated by the drawing in Pic3. These are attached with screws to the wall and can be removed if required.
- Containment (Steel Trunking) will be installed down wall and take into rack , kindly refer pic 4 for ref.

WIFI Cabling/Access point installation Summary

- All cable routes will utilise existing cable runs within the building.
- Please note the floor plans indicate which AP numbers are wall mounted the key is at the top of each floor plan and the numbers correspond to the attached pictures.
 - * Floor number is located under the respective floor plan
- Drilling will be required to mount Aps (Access points) onto walls or into the ceiling where required –
 - Ground Floor – 2 Ceiling mounted please see floor plan and pictures for the ground floor to see these locations. AP 1 & AP 2 are ceiling mounted on the false ceiling and cables will run through existing containment.
 - First Floor – 1 Ceiling mounted AP. AP 3 is ceiling mounted on the false ceiling and cables will run through existing containment.

Fibre Pictures

Pic1



Pic2



Pic3



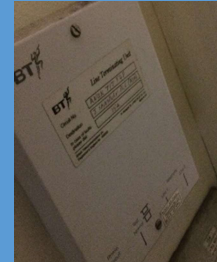
Pic4



Pic5



Pic6



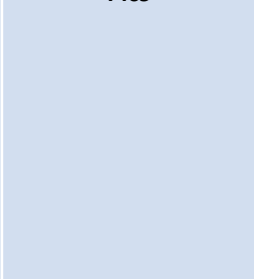
Pic7



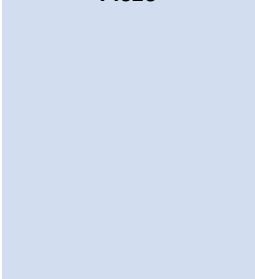
Pic8



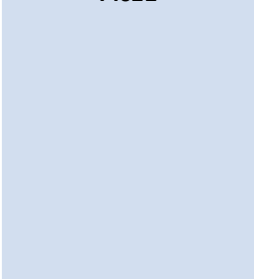
Pic9



Pic10



Pic11



Pic12



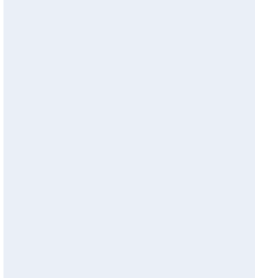
Pic13



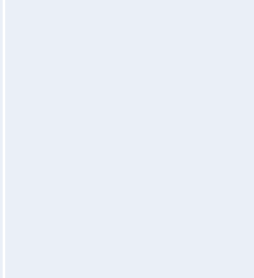
Pic14



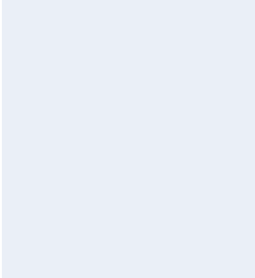
Pic15



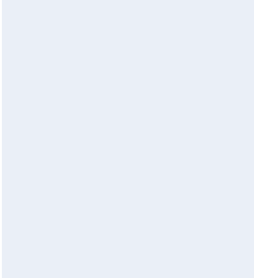
Pic16



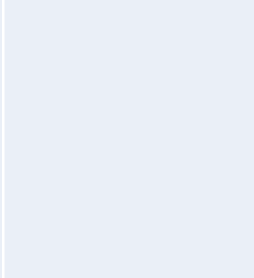
Pic17



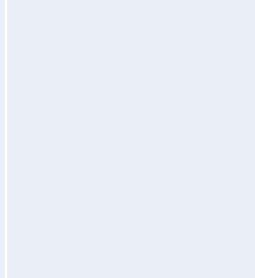
Pic18



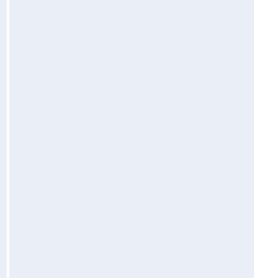
Pic19



Pic20



Pic21



Cable Run & Installation Points to Provide New Wireless Access Points (AP's)

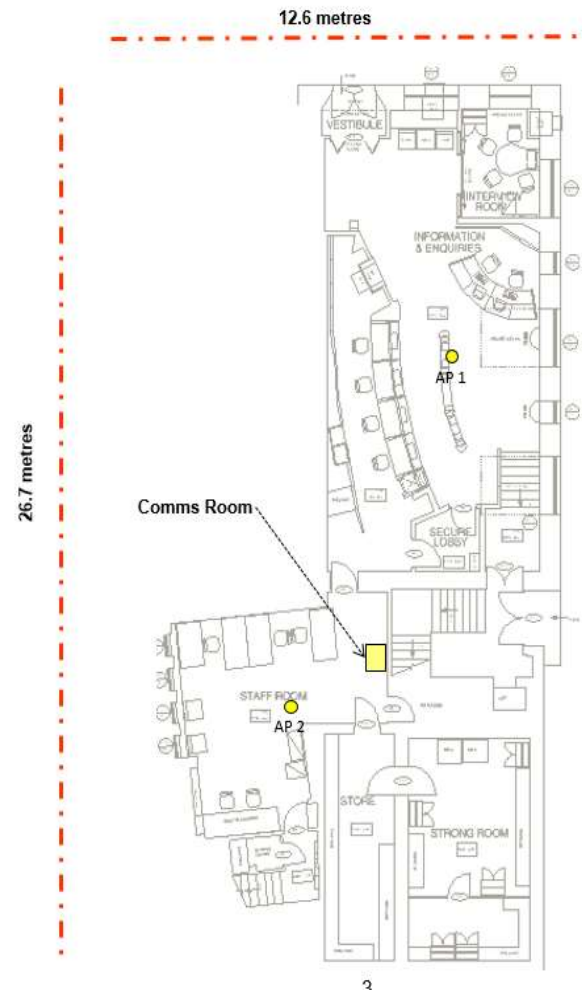
AP Positions for Installation

Frome

Ground Floor

2 APs

● Ceiling Mounted Wireless Access Point required



Ground Floor. AP's & Cable Runs

AP Pictures Ground Floor

Pic1 AP 1



Pic2 AP 2



Pic3 AP 9

Pic4

Pic5

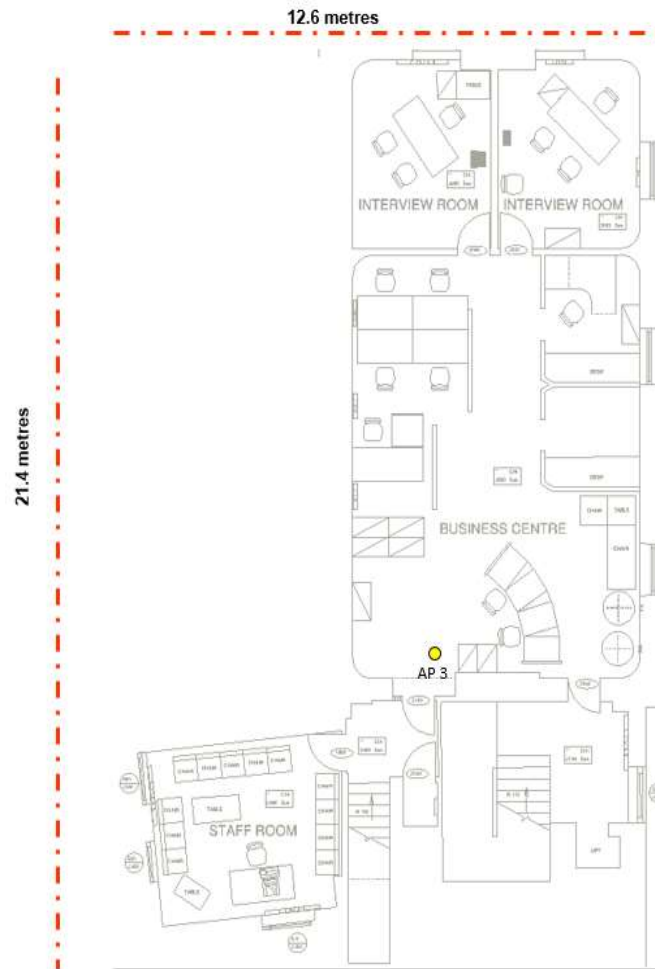
Pic6

Cable Run & Installation Points to Provide New Wireless Access Points (AP's)

AP Positions for Installation

Frome
First Floor
1 AP

● Ceiling Mounted Wireless Access Point required



First Floor. AP's & Cable Runs

AP Pictures First Floor

Pic1 AP 3



Pic2

Pic3

Pic4

Pic5

Pic6