

**- Ino.** New externally illuminated hanging board type projecting sign to be illuminated from above by 2no 80mm dia. extruded aluminium LED trough lights

- No works at upper floors

**-Ino. New externally illuminated title logo to consist of individual built up logo, illuminated from above by 80mm dia. extruded aluminium trough light**

Existing PPC aluminium shopfront to be retained and redecorated in RAL 7043 Traffic Grey.

INTERNAL FLOOR LEVEL

## Elevation A

### PROPOSED SHOPFRONT ELEVATIONS

- Drawing based on Green Hinch Survey Solutions drawing 19803-93 01-03\_PES. (dated 29/07/2016).
- All drawings to be read in conjunction with the DPG "Project site shed fitting manual UK & Ireland" revision D dated March 2014.
- All drawings to be read in conjunction with full shop fitting package of information.

All structure to be fire rated to a minimum of 60mins

## SHOPFRONT

Existing PPC aluminium shopfront and stall riser to be retained and redecorated in RAL 7043 Traffic Grey.

New PPC aluminium shopfront and sliding entrance door finished in RAL 7043 Traffic Grey.

All manually operated doors to have an opening force at the leading edge which is not more than 30N from 0° (the door in the closed position) to 30° open, and not more than 22.5N from 30° to 60° of the opening cycle.

All shop front glazing to comply with BS 5952, BS 6262 (Code of practice for Glazing in Buildings), CP 152, Approved Document N and BS6206:1981 and subsequent revisions. Glazing to shop front to be LAMINATED (NOT toughened) safety glass, minimum Class B rated to BS6206:1981 in doors or door side panels over 700mm wide, Class C elsewhere, impact resistant from both sides.

## Elevation B

Existing fascia board above shopfront to be redecorated in RAL 7043 Traffic Grey with feature square inset tiles in white

**1no. New externally illuminated title logo to consist of individual built up logo, illuminated from above by 80mm dia. extruded aluminium trough light**

1no. New externally —

illuminated from above  
2no 80mm dia. extrud  
aluminium LED trough  
lights

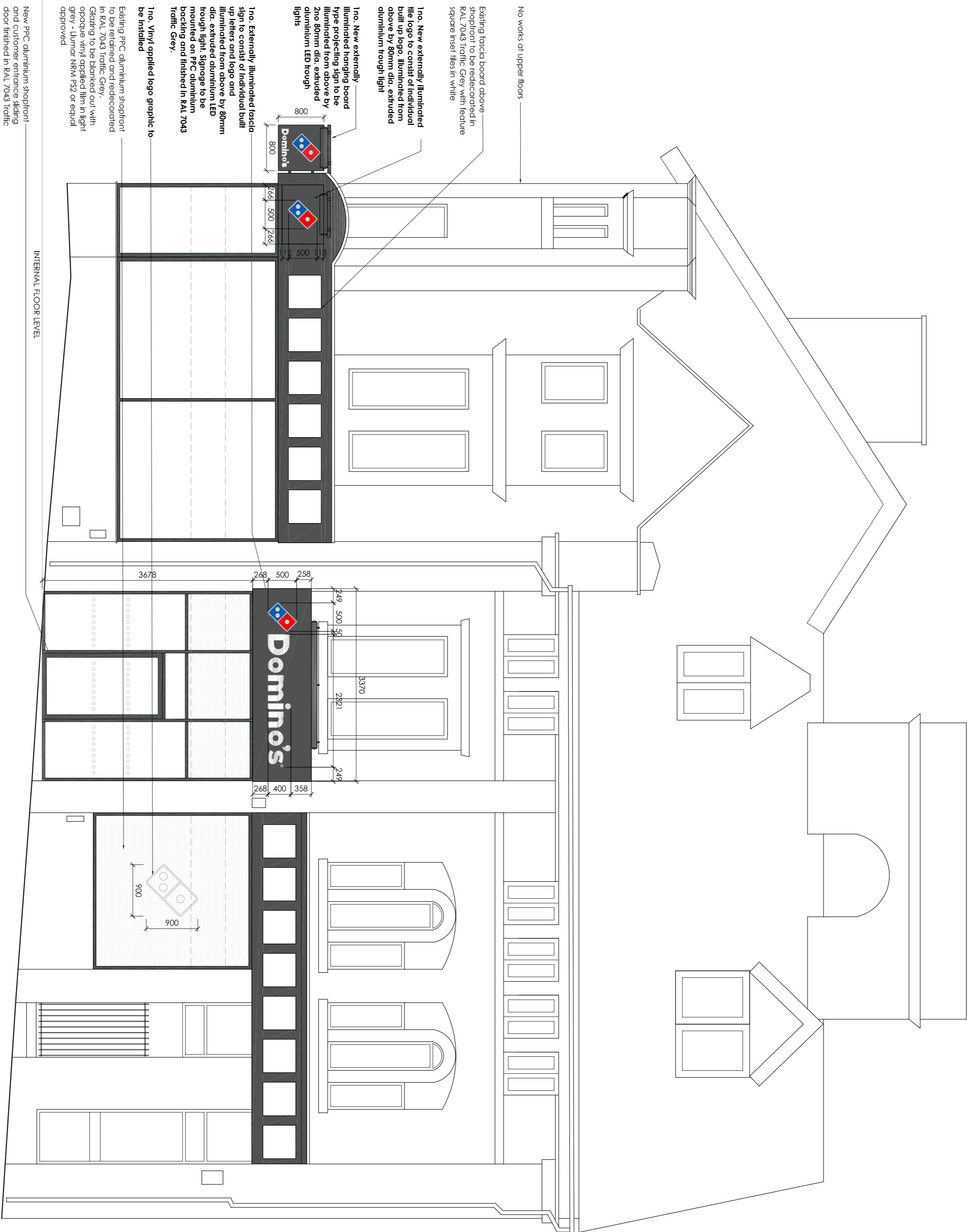
Ino. Externally illuminated fascia sign to consist of individual built up letters and logo and illuminated from above by 80mm dia. extruded aluminium LED trough light. Signage to be mounted on PPC aluminium backing and finished in RAL 7043 Traffic Grey.

1no. Vinyl applied logo graphic to be installed

to be retained and redecorated in RAL 7043 Traffic Grey.  
Glazing to be blanked out with opaque vinyl applied film in light grey - Lumar NRM PS2 or equal approved

New PPC aluminium shopfront — and customer entrance sliding door finished in RAL 7043 Traffic Grey. 3no high level glazing panels to be blanked out with opaque vinyl applied film in light grey - Lumar NRM PS2 or equal approved

INTERNAL FLOOR LEVEL



**Note:**  
Bold annotation refers to new signage application. All other text refers to amendments that form part of separate application Ref: SMD/2016/0657

## DESIGN HAZARD IDENTIFICATION

- Proposed layout subject to Building Control approval of the strategy and access arrangements.
- Asbestos survey report required prior to commencement
- Refer to Cole Jarman Planning Note Assessment Report 16/0383/R-1 for details of oil plant equipment noise mitigation measures to be implemented

## NOTES

- At dimensions and levels one to be checked on the.
- Any discrepancies are to be reported to the architect before any work commences.
- The growing shall not be scaled to ascertain any dimensions. Work to finished dims only.
- The growing shall not be reproduced without express written permission from AEW.
- The overliey drawings and ownership boundaries are produced using all reasonable endeavours. AEW cannot be held responsible for any scale discrepancy of plots supplied to them.
- The drawings are based on Geospatial Survey Scotland's Ordnance Survey 2015-2016. (OSRD2015/2016/2017/2018).

Proposed Signage Schedule				
Type	Description	Illumination	Size	Quantity
Facade Letters	Individual built up letters	Externally illuminated Max.200cd/m <sup>2</sup>	Refer to elevation for dimensions	1no.
Facade Title Logo	Individual built up logo	Externally illuminated Max.200cd/m <sup>2</sup>	Refer to elevation for dimensions	1no.
Projecting Sign	Horizontal board type sign	Externally illuminated Max.200cd/m <sup>2</sup>	Refer to elevation for dimensions	1no.
The Logo	Individual built up logo	Externally illuminated Max.200cd/m <sup>2</sup>	Refer to elevation for dimensions	1no.
Vertical Logo	Vertically applied logo graphic	No illumination	Refer to elevation for dimensions	1no.

project	17 St. Edward Street	store
	Leaky	
	5713 SDR	1.6096
drawing files		
<b>Proposed Elevations</b>		
<b>Sheet 1</b>		
date	30/09/16	drawn
checked	1:50	checked
		SJB
		JJS