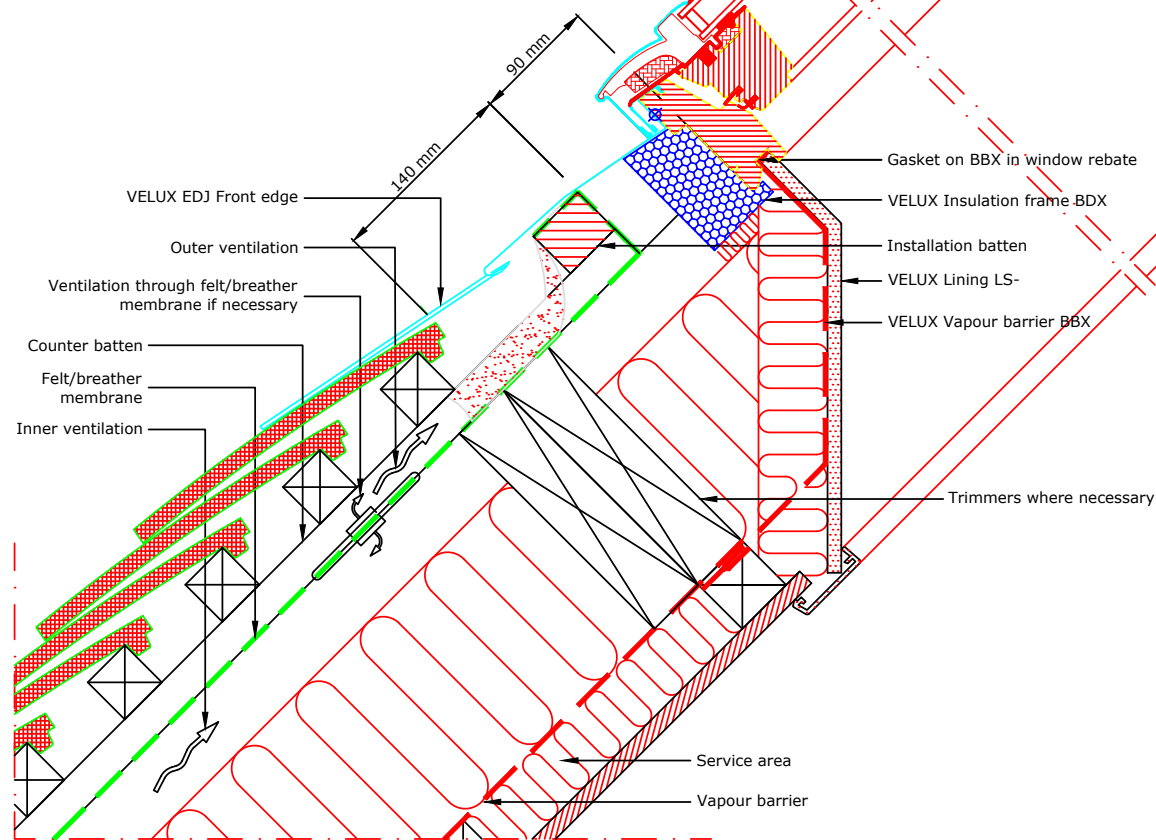


TYPICAL ELEVATION

Section A-A
1:5



1:2.5

Felt/breather membrane
VELUX transverse drainage gutter
VELUX transverse drainage gutter clip
VELUX underfelt collar BFX

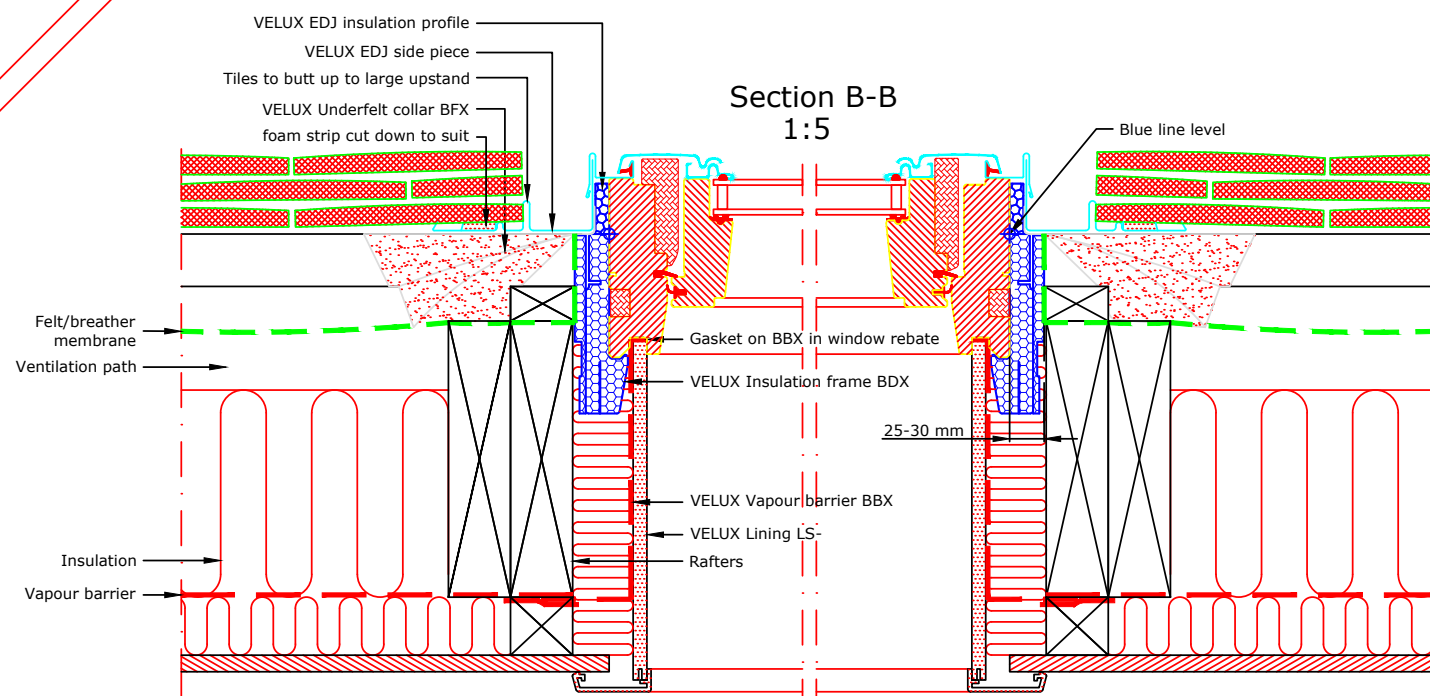
VELUX underfelt collar BFX
VELUX EDJ Gutter

Felt/breather membrane

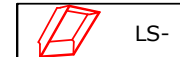
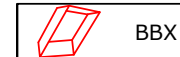
1:2.5

Trimmers where necessary
Vapour barrier
VELUX Vapour barrier BBX
Taped joint with VELUX BBX tape

Section B-B
1:5



VELUX Products:



Roof covering:



VELUX

VELUX Company Ltd
Woodside Way
Glenrothes, Fife KY7 4ND
tel: +44 (0) 1592 778 225

VELUX centre-pivot roof window
GGL single installation into plain tile
EDJ flashing kit - recessed install for tiles up to 90mm thick
All dimensions are in millimetres where shown

NOTE! When installing VELUX roof windows, flashings and accessories, please ensure compliance with building regulations and British/European standards where necessary.
This detail represents the principles of a typical installation only and the design and specification of the final detail is the responsibility of others.

Latest revision:

Date: **January 2014**

Rev no:

Rev date:

Drawn: **PJH**

File name:

GGL-EDJ-0114-1103

Scale: **1:5 approx. @ A3**