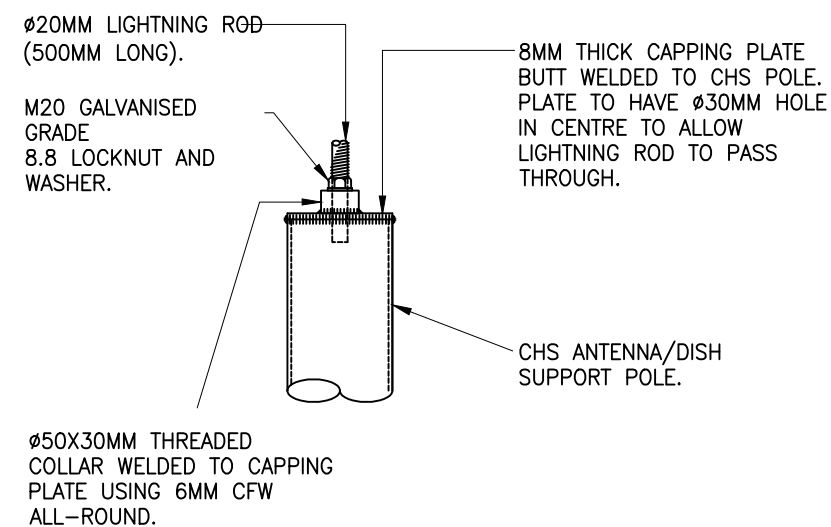
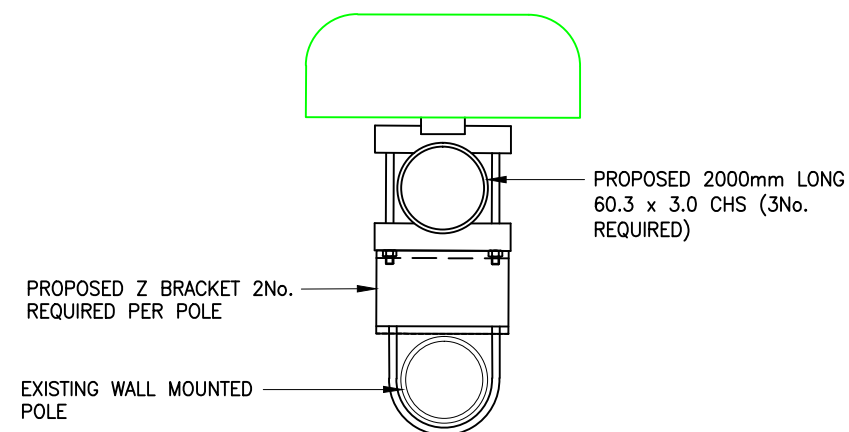


Z BRACKET DETAIL  
(2NO. BRACKETS REQUIRED PER ANTENNA, 2NO. TOTAL)  
(Scale 1:5)



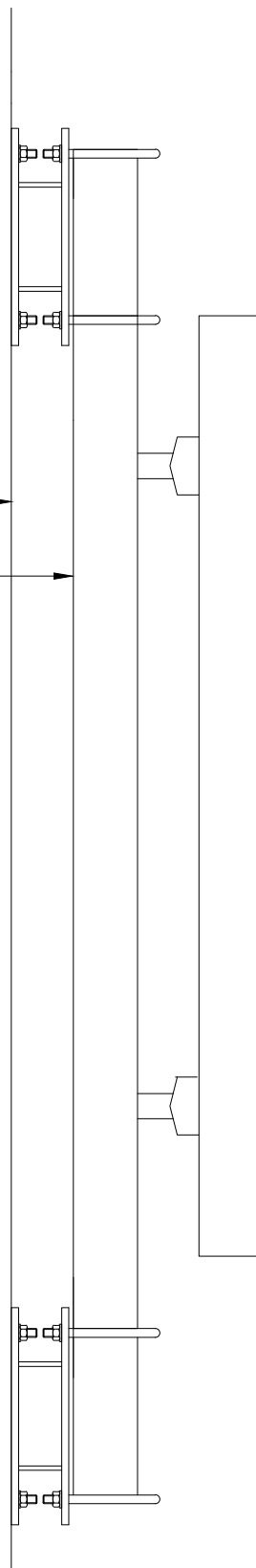
DETAIL 1 - LIGHTNING FINIAL  
(Scale 1:10)



PLAN VIEW OF Z BRACKET  
(Scale 1:10)

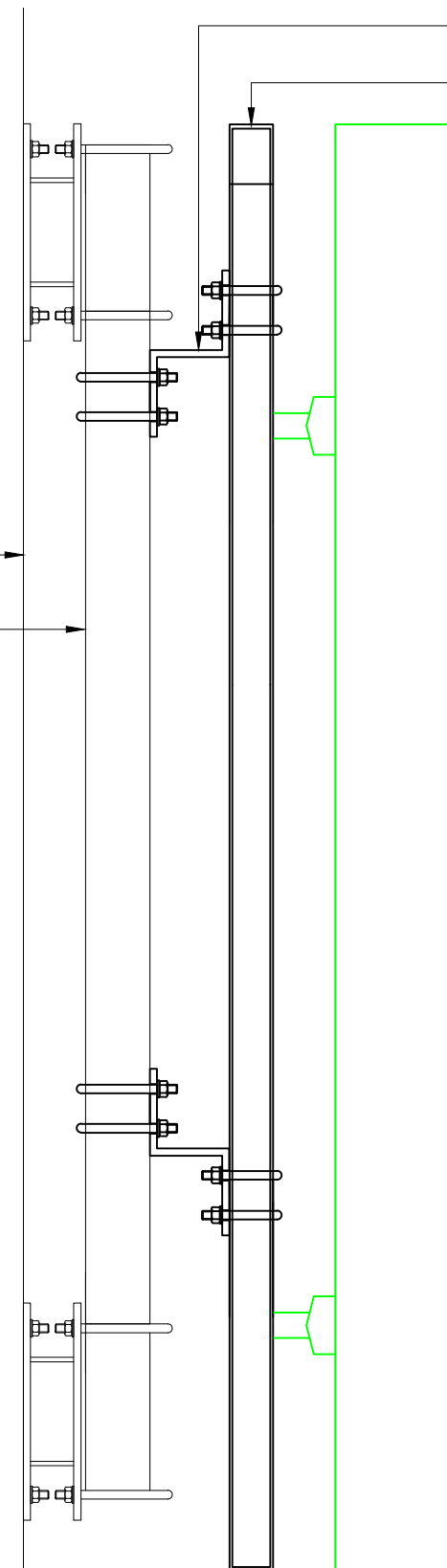
NOMINATION REF:	93930_(2014-05-13)_NSN	P1	Z Bracket Detail Added	JK	12.04.16	CH	SCALE	DRAWN BCL	CHECKED LB	APPROVED ST	DRAWING NUMBER	EE CELL REFERENCE	MBNL CELL ID
		REV	DESCRIPTION	BY	DATE	CHKD	As Shown	DATE 19.08.14	DATE 19.08.14	DATE 19.08.14	105	93930 -	STM009

EXISTING BUILDING  
EXISTING WALL MOUNTED POLE  
EXISTING ANTENNA



CROSS SECTION OF EXISTING ANTENNA SUPPORT POLE  
(Scale 1:10)

EXISTING BUILDING  
EXISTING WALL MOUNTED POLE



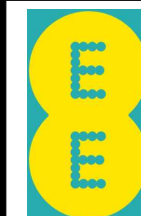
PROPOSED Z BRACKET 2No.  
REQUIRED PER POLE  
PROPOSED 2000mm LONG  
60.3 x 3.0 CHS (3No.  
REQUIRED)

EXISTING 3 No. ANTENNAS TO BE REMOVED AND  
REPLACED WITH 3 No. ANTENNAS ON NEW Z BRACKETS  
WITH 2000mm LONG 60.3x3.0 CHS POLE PAINTED MATT  
BLACK

CROSS SECTION OF PROPOSED ANTENNA SUPPORT POLE  
(Scale 1:10)

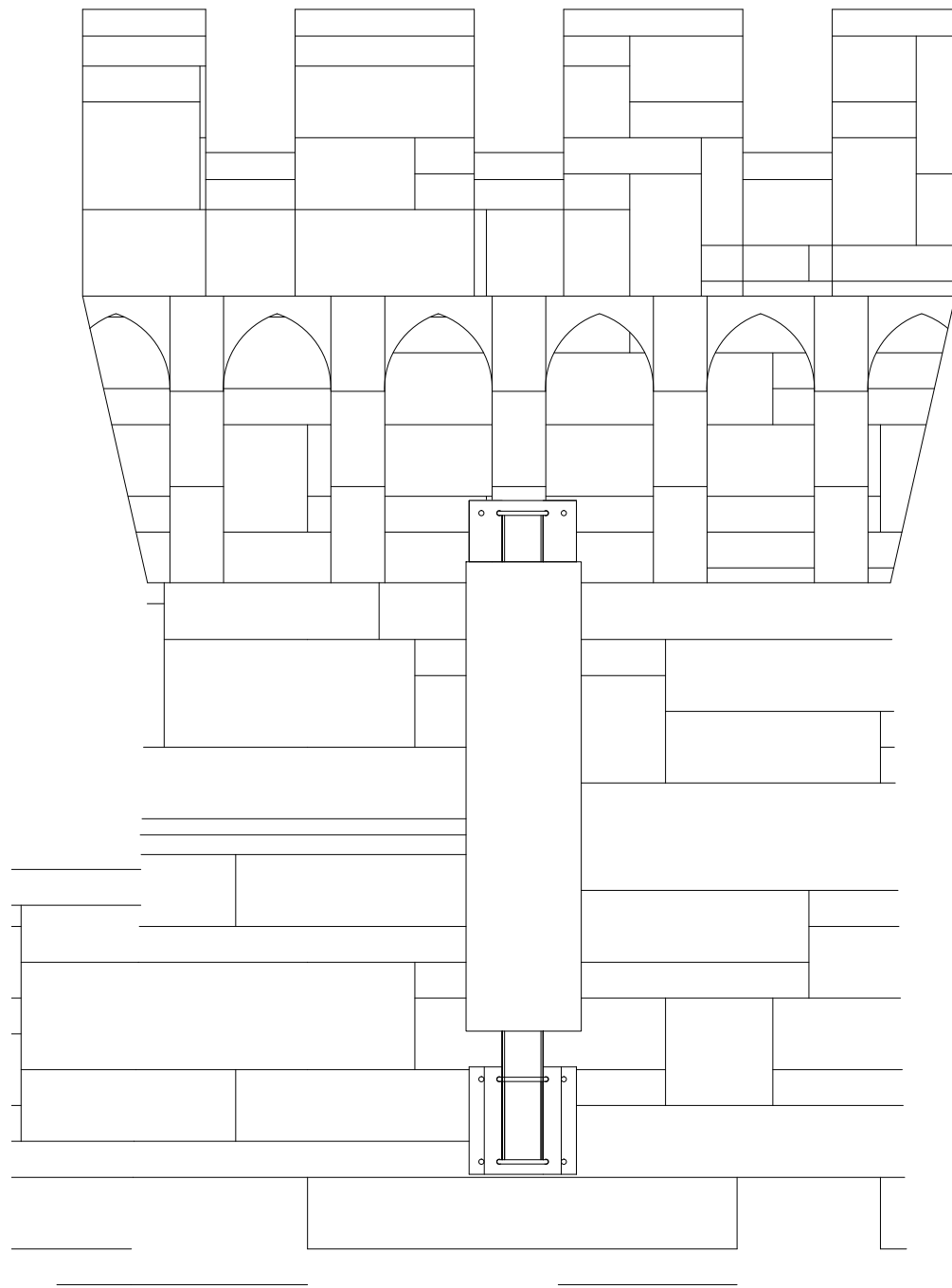


Z BRACKET DETAILS PG 2  
ADDRESS  
ALTON TOWERS (TMO)  
ALTON, STOKE-ON-TRENT,  
STAFFORDSHIRE, ST10 4DB

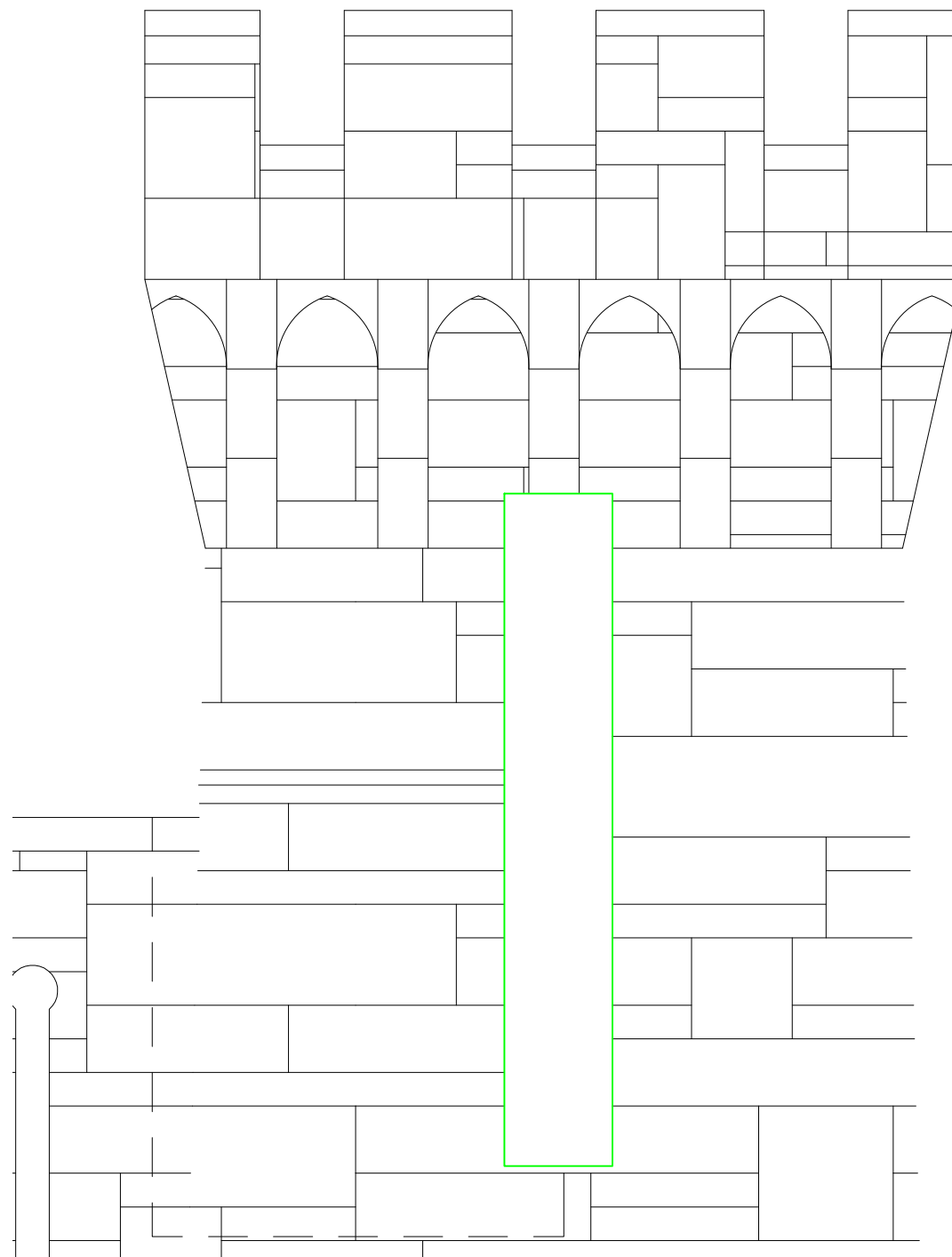


Hatfield Business Park  
Hatfield  
Hertfordshire  
AL10 9BW  
Tel 01707 315000  
Fax 01707 319001

NOMINATION REF:	93930_(2014-05-13)_NSN	P1	Z Bracket Detail Added	JK	12.04.16	CH	SCALE	DRAWN BCL	CHECKED LB	APPROVED ST	DRAWING NUMBER 106	EE CELL REFERENCE 93930 -	MBNL CELL ID STM009
		REV	DESCRIPTION	BY	DATE	CHKD	As Shown	DATE 19.08.14	DATE 19.08.14	DATE 19.08.14			



EXISTING ELEVATION OF ANTENNA  
SCALE 1:20



PROPOSED ELEVATION OF ANTENNA  
SCALE 1:20

P1	Z Bracket Detail Added	JK	12.04.16	CH
REV	DESCRIPTION	BY	DATE	CHKD

Z BRACKET DETAILS PG 3

ADDRESS

ALTON TOWERS (TMO)

ALTON, STOKE-ON-TRENT,

STAFFORDSHIRE, ST10 4DB

SCALE	DRAWN BCL	CHECKED LB	APPROVED ST	DRAWING NUMBER 107
As Shown	DATE 19.08.14	DATE 19.08.14	DATE 19.08.14	

	Hatfield Business Park Hatfield Hertfordshire AL10 9BW		Tel 01707 315000 Fax 01707 319001	
	EE CELL REFERENCE	MBNL CELL ID		
	93930 -	STM009		