

Date 13/4/2015  
 For the attention of:  
 Reference ABBOTTS ROAD ST13 6RD  
 Operator LU-VE UK OFFICE 01489 881503



## AIR COOLED CONDENSER WITH AXIAL FANS Type: SAV5N 4322 H 2VENT(1X2) - SPECIAL EC FANS

Refriger (u) 2015 Ver. 2.1.3.287 - PRICE LIST 1/2014

Air inlet temperature	[°C]	35.0
Condensing temperature	[°C]	43.7
Hot gas temperature	[°C]	78.7
<b>Subcooling</b>	<b>[K]</b>	<b>3</b>
Refrigerant		R407A
Altitude	[m]	0
Version		Horizontal
<b>Motor connection</b>	<b>400V-3PH-50Hz</b>	<b>SPECIAL EC FANS</b>
<b>Capacity</b>	<b>[kW]</b>	<b>20.88</b>
Air flow	[m <sup>3</sup> /h]	7,950.0
Energy efficiency class		C <b>(2014 thresholds)</b>
Power consumption	[W]	425
Motor consumption	[A]	1.0
Max absorbed current	[A]	3.2
Fan speed	[1/min]	930
Sound level (at distance) 10 [m]	[dB(A)]	40
Sound Power Level	[dB(A)]	71
Fans :	[mm] 2 x 500	Volume [dm <sup>3</sup> ] 16.20
Poles	[n] <b>EC FANS</b>	Surface [m <sup>2</sup> ] 96.8
Fin spacing:	[mm] 2,1	Weight [kg] 102
<b>Coil operating maximal pressure</b>	<b>[bar] 30.0</b>	Overall dimensions [mm] 1,895 x 905 x 1,071
Casing material	Powder coated galvanized steel RAL 9003	Fin material Alupaint
Headers material	Cu	Tube material Cu

\* Refer to LU-VE S.p.A. catalogues for details, presentation of data and standards. Noise level according to EN 13487. The current refers to nominal value. For max current see catalogues. Weight and dimensions are not valid for all possible configurations. All fans are ErP 2015-compliant (Directive 2009/125/EC Energy-related products). LU-VE S.p.A. reserves the right to modify and correct at any time, with or without notice, the specifications and prices listed in the Refriger software. **WARNING: please always contact LU-VE S.p.A. before coupling a regulation NOT supplied by LU-VE S.p.A.**

New EC fan. When setting the rpm take into consideration a tolerance of  $\pm 5\%$ . Self protected, suitable for regulation by signal 0-10 VdC or BUS RS485.

### SOUND POWER LEVEL

	Tot.	63Hz	125Hz	250Hz	500Hz	1kHz	2kHz	4kHz	8kHz
400V-3PH-50Hz [dB(A)]	68	44	48	53	61	66	59	53	46

Data refers to one fan. **IMPORTANT: data tolerance in the sound spectrum is higher ( $\pm 5$  dBA) than the combined pressure and power spectrum, with greater variation at low frequencies.**

### NIGHT TIME

Air inlet temperature	[°C]	35.0
Condensing temperature	[°C]	47.8
<b>Capacity</b>	<b>[kW]</b>	<b>20.88</b>
Power consumption	[W]	150
Fan speed	[1/min]	580
Sound level	[dB(A)]	29
Sound Power Level	[dB(A)]	60

### Accessories:

Q.ty	Code	Type:	Description
1	30087140	ESJ 2/16A	ELECTRICAL PANEL FOR EC FANS 400V/3PH/50Hz
2	30108553A	A3G500-AN33--400V-1600rpm	EC FANS
1	ALUP	ALUPAINT	ALUPAINT
1	CABLEC	CABLAGGIO REG. EC FANS	WIRING FOR EC FANS
1	SCOOLO001	XXXX	SUBCOOLING

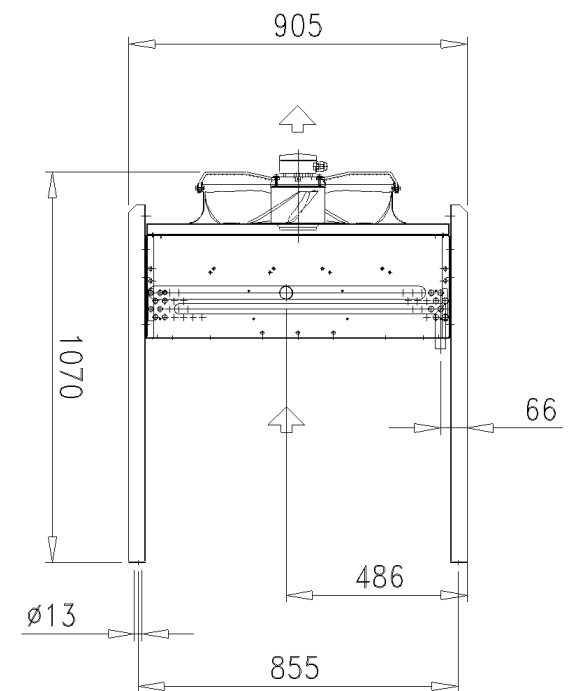
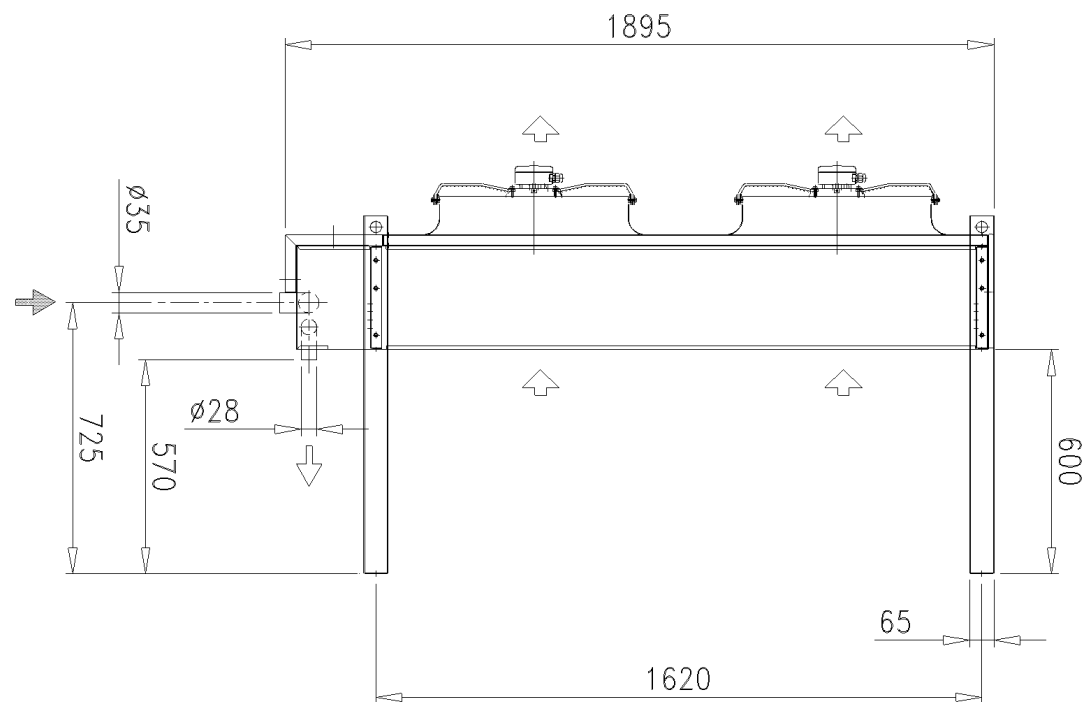
**WARNING, circuiting and connections are different from standard**

LUVE S.p.A Headquarters Uboldo ITALY via caduti della Liberazione, 53

Tel +39 02 967161 Fax +39 02 96780560 mail [sales@luvegroup.com](mailto:sales@luvegroup.com) web [www.luvegroup.com](http://www.luvegroup.com)

Australia	Costa Rica	France	Hong Kong	Poland	Singapore	UAE
Austria	China	Germany	India	Russia	Spain	UK & Eire

For contact details see [www.luvegroup.com](http://www.luvegroup.com)



Drawing refers to a machine in standard configuration, accessories not shown.  
**WARNING**, the drawing does not show accessory Special circuiting.

Date	17-09-08	Type: SAV5N 4322 H 2V
Scale	1:20	Code: 10101998
