

KEY

New shrub planting

Boston Seeds BS11: Acidic Soils Mixture, 80% grass seed, 20% wildflowers, sown at a rate of 5g/m2

New tree & specimen shrub planting

Proposed hedge planting

Existing trees to remain

Existing trees removed

Retain undergrowth and existing hedges etc.

Retain existing mature shrubs/ferns etc. to enhance setting of buildings

Retain existing mature shrubs/ferns etc. to enhance setting of buildings

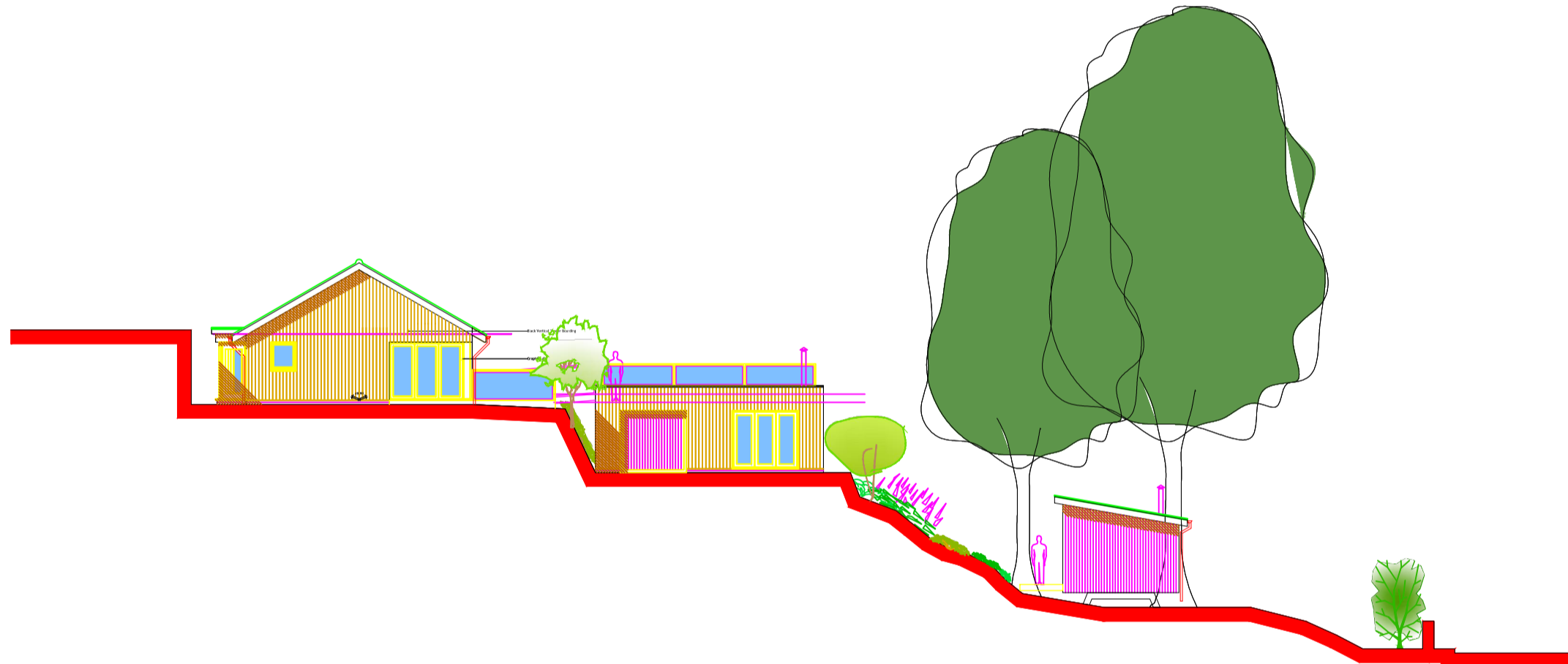
Planting schedule

Tree	Number	Abbreviation	Species	Specification	Girth	Height	Pot Size	Common Name	Density
3	No.	ACEPA	Acer campestre	Standard-BR	8-10cm	300-350cm		Common Maple	Counted
2	No.	ACEPA	Acer palmatum	Multi-Stemmed 3/7 brks-BR		250-300cm		Japanese Maple	Counted
1	No.	ACEPASE	Acer palmatum 'Senkaki'	Bushy-Multi-Stemmed-BR		80-100cm			Counted
3	No.	AMELA	Amelanchier laevis	Bushy-Feather 3 brks 2x-BR		80-100cm		Common Silver Birch	0.75ctr
1	No.	BETJACA	Betula utilis jacquemontii	Standard-BR	8-10cm	300-350cm		White-barked Himalayan Birch	Counted
21	No.	KALAE	Crataegus laevigata	Wilm-BR		80-80cm		0.5ctr Double Staggered at 0.6m offset	
40	No.	Cmo	Crataegus monogyna	Whip-BR		60-80cm		Common Hawthorn	0.5ctr Double Staggered at 0.6m offset
40	No.	Cmo	Crataegus monogyna	Bushy-Feather 3 brks 2x-BR		80-100cm		Common Hawthorn	0.75ctr
21	No.	LA	Ilex aquifolium	Bushy 4		60-80cm	SL	Common Holly	0.5ctr Double Staggered at 0.6m offset
1	No.	PRUSE	Prunus serrula	Standard-BR	8-10cm			Counted	
1	No.	Sau	Sorbus aucuparia	Standard-BR	8-10cm			Rowan	Counted

Shrubs	Number	Abbreviation	Species	Specification	Common Name	Height	Pot Size	Density
7	No.	Bse	Buxus sempervirens	Branched-Bushy-C	Common Box	60-80cm	3L	0.75ctr
11	No.	Bse	Buxus sempervirens	Bushy-C	Common Box	30-40cm	2L	0.5ctr
10	No.	CAMJADA	Camellia japonica 'Adolphus Audusson'	Bushy-C		60-80cm	3L	0.75ctr
3	No.	CAMJATR	Camellia japonica 'Tricolor'	Bushy-C		40-60cm	3L	0.75ctr
4	No.	CHOITE	Choisya ternata	Bushy-C	Mexican Orange Blossom	60-80cm	3L	0.6ctr
40	No.	Cay	Corylus avellana	BR	Common Hazel	60-80cm	3L	0.5ctr Double Staggered at 0.6m offset
43	No.	GD	Cotoneaster dammeri	Bushy-C	Bearberry Cotoneaster	30-40cm	2L	0.5ctr
43	No.	DAPLA	Daphne laureola	Bushy-C		30-40cm	2L	0.5ctr
16	No.	BRI CAFO	Erica carnea 'Foxhollow'	Bushy-C		20-30cm	2L	0.4ctr
10	No.	EGPS	Erica carnea 'Pink Spangles'	Bushy-C	Alpine Heather 'Pink Spangles'	15-20cm	2L	0.4ctr
43	No.	BRI DAAJ	Erica darleyensis 'Arthur Johnson'	Bushy-C		15-20cm	2L	0.4ctr
7	No.	GAUMUC	Gaultheria mucronata 'Crimsonia'	Bushy-C		40-50cm	3L	0.6ctr
6	No.	LEAO	Ilex aquifolium	Bushy-C	Common Holly	60-80cm	3L	0.75ctr
2	No.	LAJVI	Ilex aquifolium 'J.C. van Tol'	Bushy-C	Holly 'J.C. van Tol'	60-80cm	3L	0.75ctr
6	No.	LOANFR	Lonicera fragrantissima	Bushy-C	Sweet Breath of Spring	40-60cm	3L	0.6ctr
1	No.	MAGSU	Yucca filamentosa	Branched-Bushy-BR		175-200cm		Counted
11	No.	OB	Osmanthus burkwoodii	Bushy-C	Osmanthus	30-40cm	2L	0.5ctr
14	No.	PF	Persea forest flame	Bushy-C	Persea Forest Flame	30-40cm	3L	0.6ctr
7	No.	PRULA	Prunus laurocerasus	Bushy-C		60-80cm	3L	0.9ctr
11	No.	PRULA	Prunus laurocerasus	Bushy-C		60-80cm	3L	0.75ctr
43	No.	PRUL	Prunus laurocerasus 'Otto Layken'	Bushy-C	Cherry Laurel 'Otto Layken'	30-40cm	2L	0.5ctr
5	No.	PZ	Prunus laurocerasus 'Zabeliana'	Bushy-Branched-C	Cherry Laurel 'Zabeliana'	30-40cm	2L	0.6ctr
21	No.	PRUSP	Prunus spinosa	BR	Blackthorn	60-80cm	3L	0.5ctr Double Staggered at 0.6m offset
3	No.	PRRC	Pyracantha 'Red Column'	Several shoots-Leader With Laterals-Bushy-C		100-125cm	4L	0.7ctr
40	No.	RHACA	Rhamnus cathartica	BR	Common Blackthorn	60-80cm	3L	0.5ctr Double Staggered at 0.6m offset
7	No.	RBT	Rhododendron 'Blue Tit'	Bushy-C	Rhododendron 'Blue Tit'	25-30cm	3L	0.5ctr
43	No.	RHOYA	Rhododendron Cynthia	Bushy-C		60-80cm	3L	0.9ctr
43	No.	RHOYA	Rhododendron yakushimanum	Bushy-C		30-40cm	3L	0.5ctr
43	No.	SARCO	Sarcococca confusa	Bushy-C	Sweet Box	20-30cm	2L	0.5ctr
13	No.	SARHGHU	Sarcococca hookeriana humilis	Bushy-C		20-30cm	2L	0.5ctr
35	No.	SIL	Skimmia japonica 'Rubella'	Bushy-C	Skimmia 'Rubella'	30-40cm	2L	0.5ctr
21	No.	VIROP	Viburnum opulus	Bushy-C	Guelder Rose	60-80cm	3L	0.5ctr Double Staggered at 0.6m offset
5	No.	VIROP	Viburnum opulus	Bushy-C	Guelder Rose	60-80cm	3L	0.75ctr
15	No.	VRTTIG	Viburnum tinus 'Gwenllian'	Bushy-C		60-80cm	3L	0.7ctr

Conifers	Number	Abbreviation	Species	Specification	Common Name	Pot Size	Height	Density
2	No.	PgaC	Picea glauca albertiana	Conica Single leader-Bushy	Dwarf Alberta Spruce	10L	60-80cm	Counted

Ferns	Number	Abbreviation	Species	Specification	Density
11	No.	ATHFI	Athyrium filix-femina	Full Pot-C	0.6ctr
11	No.	ADHAE	Adiantum aethiopicum	Full Pot-C	0.6ctr



Proposed Site Site Section #1

All plants shall comply with BS 3936, and shall be from a nursery which is a member of the HTA Nursery accreditation scheme.
All shrub beds to receive a minimum of 300mm topsoil to BS3882 Category: multipurpose
Soil beneath topsoil layer to be broken up to a minimum of 200mm before topsoiling takes place.
All grassed areas to receive a minimum of 150mm topsoil to BS 3882.
To all planted areas, incorporate a general tree and shrub planting compost to Landscape Architect's approval, to a depth of 75mm.
All trees and shrubs to receive fertiliser, Fisons Ficote slow release 14:14:14 neutral analysis at the following rates:
Whips/shrubs 25g each
TREE PIT SIZES

Planting pits for standard trees to be depth of root ball, with bottom of pit broken up to a depth of 400mm
Pit sizes: 600x600x600 for Standard trees & 750x750x750 for Heavy standard & semi-mature trees
Backfill tree pits with good quality topsoil mixed with peat free tree planting
25 litres per standard/heavy standard tree
Trees to be supported by single stake 1800 long driven into ground by one third. Tree ties to be rubberised attached to stake with galvanised nails.
Shrub beds to be mulched with ornamental grade bark mulch to min. 50mm
Position of all services to be established before any excavations take place
Any trees or shrubs which die within a period of 5 years from the date of planting to be replaced with same size & variety
All open ground whips to receive mesh reinforced tubular rabbit guards. 750mm x 900mm, supported by a stake
Turf to be domestic quality turf

SEEDED AREAS-NOTE: NO ADDITIONAL TOPSOIL REQUIRED: FOR BEST RESULTS SEED INTO SUBSOIL

The Contractor shall hand rake (or chain harrow with spikes down and with a weighted harrow) the whole area to be seeded, removing from site all weeds, roots, rubbish and stones greater than 75mm in any dimension, brought to the surface as the work proceeds, to bring the soil to a fine tilth for sowing. The Contractor shall allow for the removal from site of all debris resulting from these operations. Raking (or chain harrowing) shall be continued until the whole of the area has been broken down to a fine and even tilth to the approval of the Landscape Architect. The Contractor shall allow for feathering new grassed areas into existing grass and for ensuring that new grassed areas marry smoothly and evenly into existing kerbs, pavings etc., after settlement.
No seeding shall take place until the soil is brought to an even surface and fine tilth, to the approval of the Landscape Architect.
Sowing shall be carried out during suitable calm weather conditions or as may otherwise be agreed beforehand with the Landscape Architect. The seed shall be sown, at the rate specified above, by an approved machine. On small areas, where this is impractical, the seed shall be sown by hand. After sowing, the ground shall be lightly harrowed or raked, and rolled and cross-rolled with a lightweight Cambridge roller.
Contractor shall retain and hand to the Landscape Architect each and every certified label from the bags delivered to and used on the site, immediately following completion of sowing.
The Contractor shall be responsible for making good all areas where germination is deemed by the Landscape Architect to be unsatisfactory, and he shall recultivate and re-seed as specified (including supplying seed as previously specified) at his own expense until a good sward is obtained to the approval of the Landscape Architect.
The seed mixture shall consist of the mixture as specified on the plan adjacent and sown at a rate of 5g/m2 or as specified by the supplier.



ANNE EVANS Dip LA Glos CMLI
CHARTERED LANDSCAPE ARCHITECT
WAINY ELMS
THE GREEN
SHUSTOKE
COLESHILL
BIRMINGHAM B46 2AN
Tel/fax 01675 481718
Mobile 07973 671452
email:anneevans@wainy.wanadoo.co.uk

DRG.3B-SECTION AMENDED AEE31.03.15
DRG.3a-REVISIONS-TO-LAYOUT-INCLUDING-OMISSION-OF-1NO.-LODGE AEE4.03.15
DRG.3.3-MINOR-REVISIONS-TO-LAYOUT AEE.6.12.14

SOFT LANDSCAPE PROPOSALS

PROPOSED REPLACEMENT DWELLING & LODGES
THE LODGE, MILL ROAD
OAKAMOR
ST10 3AG

DRAWN AEE SCALE 1:200@A1
DATE FEBRUARY-2014

AE1322-03

B